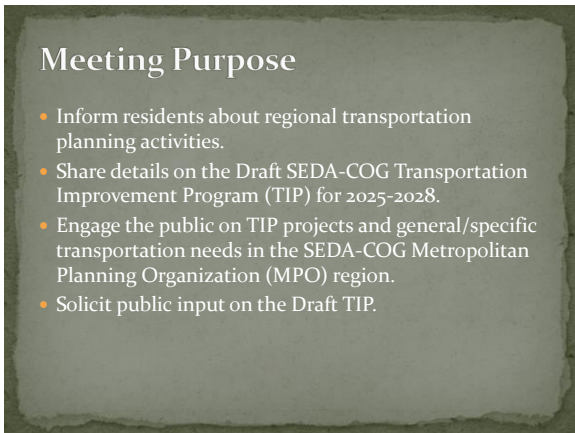
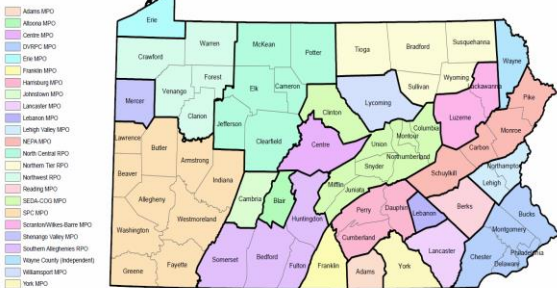


1



2



MPO = Metropolitan Planning Organization
RPO = Rural Planning Organization

3

SEDA-COG MPO Membership

County Appointees	SEDA-COG Board Appointees	Municipal Appointees	PennDOT & SEDA-COG Staff
Stephen Gibson, Clinton County Planning	Michele Holman – Transit Interests, rabbitransit	Lisa Dooley, Town of Bloomsburg Manager	Mark Schultz, PennDOT District 2-o
Eric Stahley, Columbia County Resiliency Office	Bob Stoudt – Multimodal Interests	Jack Kytile, Borough of Berwick Public Works	Jonathan Ranck, PennDOT District 3-o
Brad Kerstetter, Juniata County Planning	Randy Karschner – Member of SEDA-COG Board, Columbia County		Nathan Walker, PennDOT Central Office
James Lettiere, Mifflin County Planning			Steve Herman, SEDA-COG Transportation Director
Greg Molter, Montour County Planning			
Justin Skavery, Northumberland County Planning			
Lincoln Kaufman, Snyder County Planning			
Shawn McLaughlin, Union County Planning			

4

SEDA-COG MPO Region

MPO Designated in 2013

- 8 Counties
- 8 Urban Areas
- 177 Municipalities
- 3,400+ Square miles
- 364,029 Residents (2020)
- 2 PennDOT Districts
- 6,700+ Roadway miles
- 10.2 million daily vehicle miles traveled (2021)
- 2,200+ Bridges
- 390+ Railroad track miles
- 4 Transit agencies (1 fixed-route)
- 9 Airports (general aviation)
- 143 BicyclePA Routes

SEDA-COG MPO- 2020 Census Urban Areas
SEDA-COG 08/ 2023

5

Transportation Infrastructure

- Roadways
 - Pavement, shoulder, guiderail, right-of-way
- Structures
 - Bridges, culverts, tunnels, sign structures, utilities
- Signs, Signals & Lighting
 - Intersections, beacons, luminaires
- ITS & Technology
 - Variable message signs, traffic cameras, advisory radio
- Parking
 - Park & ride, rest areas, weigh stations
- Transit
 - Vehicles, communications
- Pathways & Trails

6

Transportation Plans in Pennsylvania

There are three primary transportation plans at the state and regional level:

- Transportation Improvement Program (4 Years)
- Twelve Year Program (TYP)
- Long-Range Transportation Plan (minimum 20 Years)

The TIP serves as the first 4 years of the other plans

The TYP serves as years 5-12 of the L RTP

7

What is the TIP?

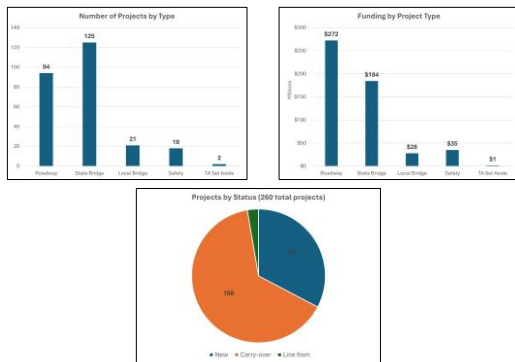
Transportation Improvement Program

- List of region's high priority transportation projects
- Fiscally constrained by year, costs must account for inflation
- Means for the public to have a voice in ongoing transportation planning
- Updated every two years

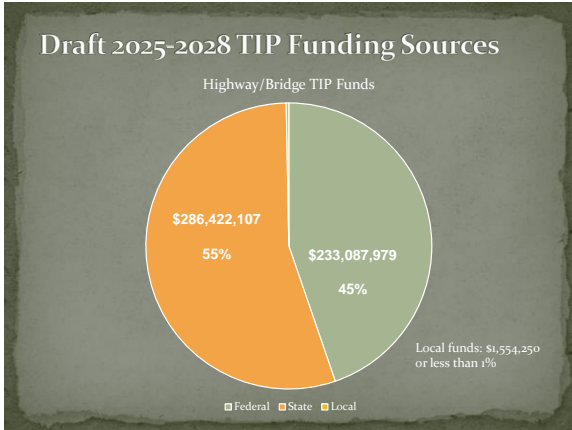
The TIP is a summary of the projects we plan to study/design/build during the next four years

8

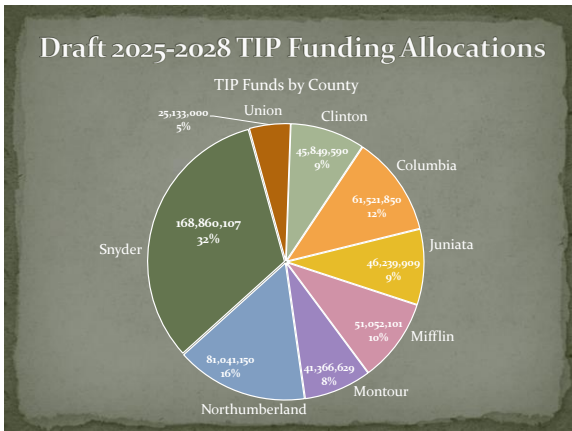
2025-2028 SEDA-COG MPO TIP Summary



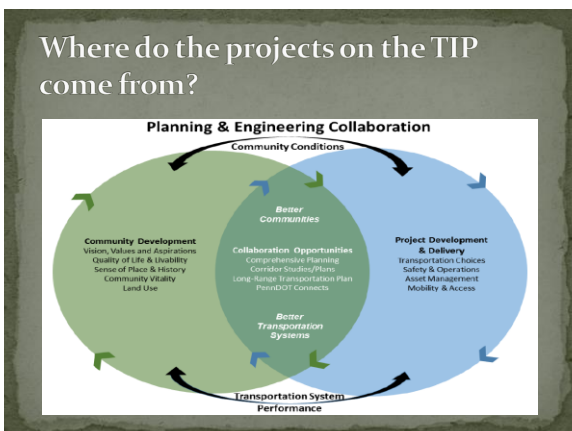
9



10



11



12

PennDOT Connects

PennDOT Connects is PennDOT's policy committed to collaborative planning in the transportation planning process. PennDOT Connects requires collaboration with MPO/RPO staff and local government planners/staff on all proposed projects during planning. Collaboration provides the opportunity for details unique to communities to be identified and discussed for each project in planning, prior to developing project scopes and cost estimates. Additional detail on PennDOT Connects is included throughout DM-LA.



13

What kind of projects are included on the TIP?

- Bridge Rehabilitation & Replacements
- Highway Maintenance & Reconstruction
- Safety Improvements (includes railroad crossings)
 - New Highway Construction
 - Transportation Alternatives
 - Transit Projects

14

Bridge Construction

- Rehabilitate or Replace Poor Bridges



Poor Bridge
Before Replacement



New Bridge
After Replacement

15

Roadway Construction

- Resurfacing Roadways



Roadway with Poor Pavement
SR 61 in Kulpmont Borough,
Northumberland County



Roadway with Poor Pavement
SR 1025 in Berwick Borough,
Columbia County

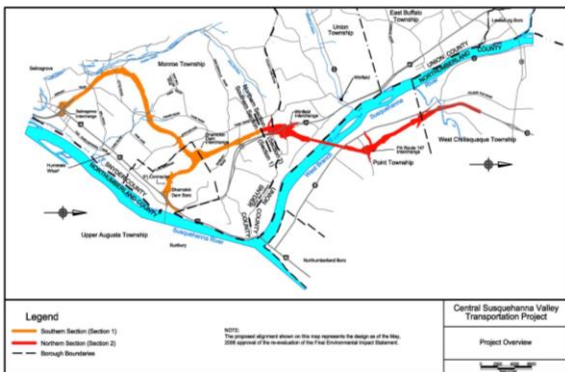
16

Major Projects on the 2025 TIP

- Central Susquehanna Valley Transportation Project: Snyder/Union/Northumberland Counties
- State Route 120 Restoration and Slide Repair in Noyes Township, Clinton County
- State Route 405 Restoration in Delaware Township, Northumberland County
- State Route 22 Restoration (Lewistown Narrows) in Mifflin County
- State Route 54 Corridor Safety Improvement project in Valley and Mahoning Townships, Montour County
- State Route 239 Bridge Restoration over Fishing Creek in Benton Borough, Columbia County
- State Route 22 Bridge Restoration in Walker and Delaware Townships, Juniata County

17

CSVTP Project




18



19

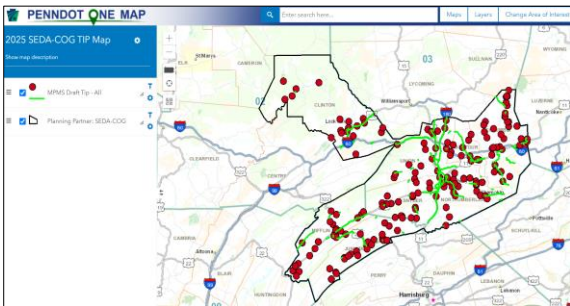
Draft Transit TIP



	FFY 2025	FFY 2026	FFY 2027	FFY 2028	Total
Call A Ride Service, Inc.	\$436,000	\$216,000	\$525,000	\$420,000	\$1,597,000
Geisinger Health System	\$750,000	\$788,000	\$827,000	\$869,000	\$3,234,000
Lower Anthracite Transit System	\$170,000	\$0	\$0	\$0	\$170,000
Totals	\$1,356,000	\$1,004,000	\$1,352,000	\$1,289,000	\$5,001,000

20

Where are the Draft 2025-2028 TIP projects located?



21

How do you comment?

- Review the documents included in the TIP – available for download on SEDA-COG's website:
<https://seda-cog.org/departments/transportation/transportation-improvement-program/>



- Provide written comments to us by **4:00 p.m. on Monday, May 20, 2024**

25

What happens to your comments?



- You will receive a response from SEDA-COG. Comments are forwarded to the MPO to be included with other information about the TIP when they consider it for adoption.
- The MPO may consider changes based on your comments, if appropriate.
- Your comments will be considered when we're developing candidate projects at the beginning of the next TIP update (summer 2025).
- You will be notified of ongoing activities related to the TIP using the contact information provided with your comments so that you can stay involved.
- The MPO and PennDOT may also consider these comments as funds become available to add projects to the current TIP.
- This is your chance to let the members of the MPO and other decision makers know what you think the important transportation projects and issues are in our area!*

26

2025-2028 TIP Schedule

- May 20: Close public comment period
- June 14: SEDA-COG MPO meeting to adopt TIP
- June 14: SEDA-COG submits TIP to PennDOT
- August: State Transportation Commission Approval
- September: Federal Highway Administration & Federal Transit Administration Approval
- October 1st: New TIP takes effect



27

Bipartisan Infrastructure Law

- Provides additional \$4 billion to PA from 2022-26
- Provides additional \$126 million to SEDA-COG MPO area from 2022-26
- Need to match federal funds with 20% state funds
- Several new discretionary programs

www.fhwa.dot.gov/bipartisan-infrastructure-law

[DOT Discretionary Grants Dashboard | US Department of Transportation](#)

28

Questions & Answers



29

Thank You!

You may contact us at:

SEDA-COG
 201 Furnace Road
 Lewisburg, PA 17837
 570-524-4491



kmclaughlin@seda-cog.org

30