

# Public Meeting on the Draft 2027-2030 SEDA-COG TIP

Union County Government Center  
or Virtual

May 4, 2026 – 9:00 a.m. to 10:00 a.m.



# Meeting Purpose



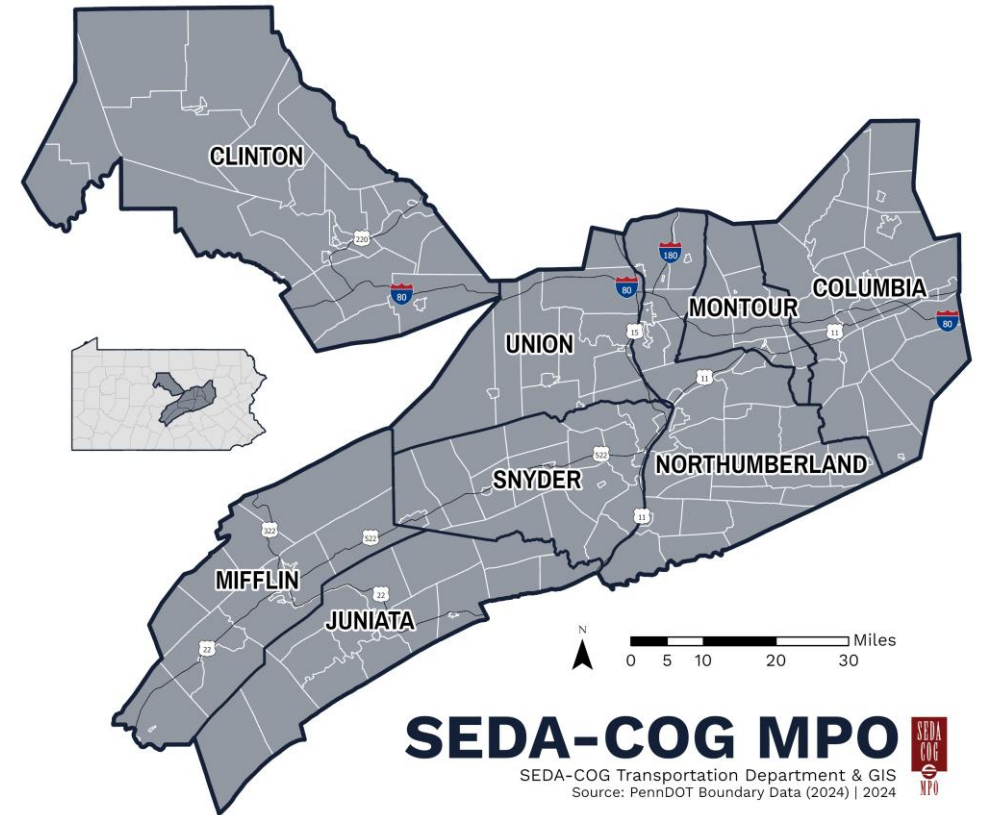
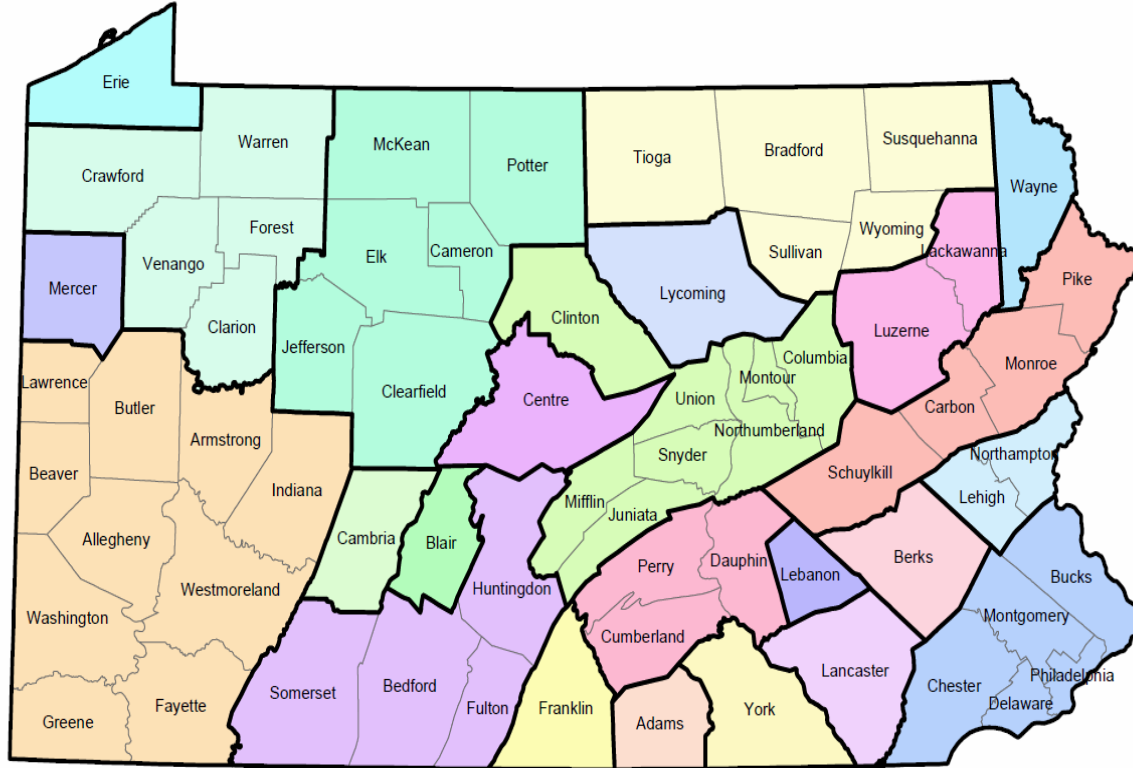
- Overview of Regional Transportation Planning
- Present the Draft 2027-2030 SEDA-COG Transportation Improvement Program (TIP)
- Describe the Role of Public Feedback
- Solicit Public Input on the Draft TIP
- Q&A



# PennDOT Planning Partners



- Adams MPO
- Altoona MPO
- Centre MPO
- DVRPC MPO
- Erie MPO
- Franklin MPO
- Harrisburg MPO
- Johnstown MPO
- Lancaster MPO
- Lebanon MPO
- Lehigh Valley MPO
- NEPA MPO
- North Central RPO
- Northern Tier RPO
- Northwest RPO
- Reading MPO
- SEDA-COG MPO
- SPC MPO
- Scranton/Wilkes-Barre MPO
- Shenango Valley MPO
- Southern Alleghenies RPO
- Wayne County (Independent)
- Williamsport MPO
- York MPO



**SEDA-COG MPO**  
 SEDA-COG Transportation Department & GIS  
 Source: PennDOT Boundary Data (2024) | 2024



MPO – Metropolitan Planning Organization  
 RPO – Rural Planning Organization

# SEDA-COG MPO Staff Function



SEDA-COG MPO staff fulfill federal and state planning requirements while acting as an extension of and consultant to county and municipal governments



# SEDA-COG MPO Voting Membership

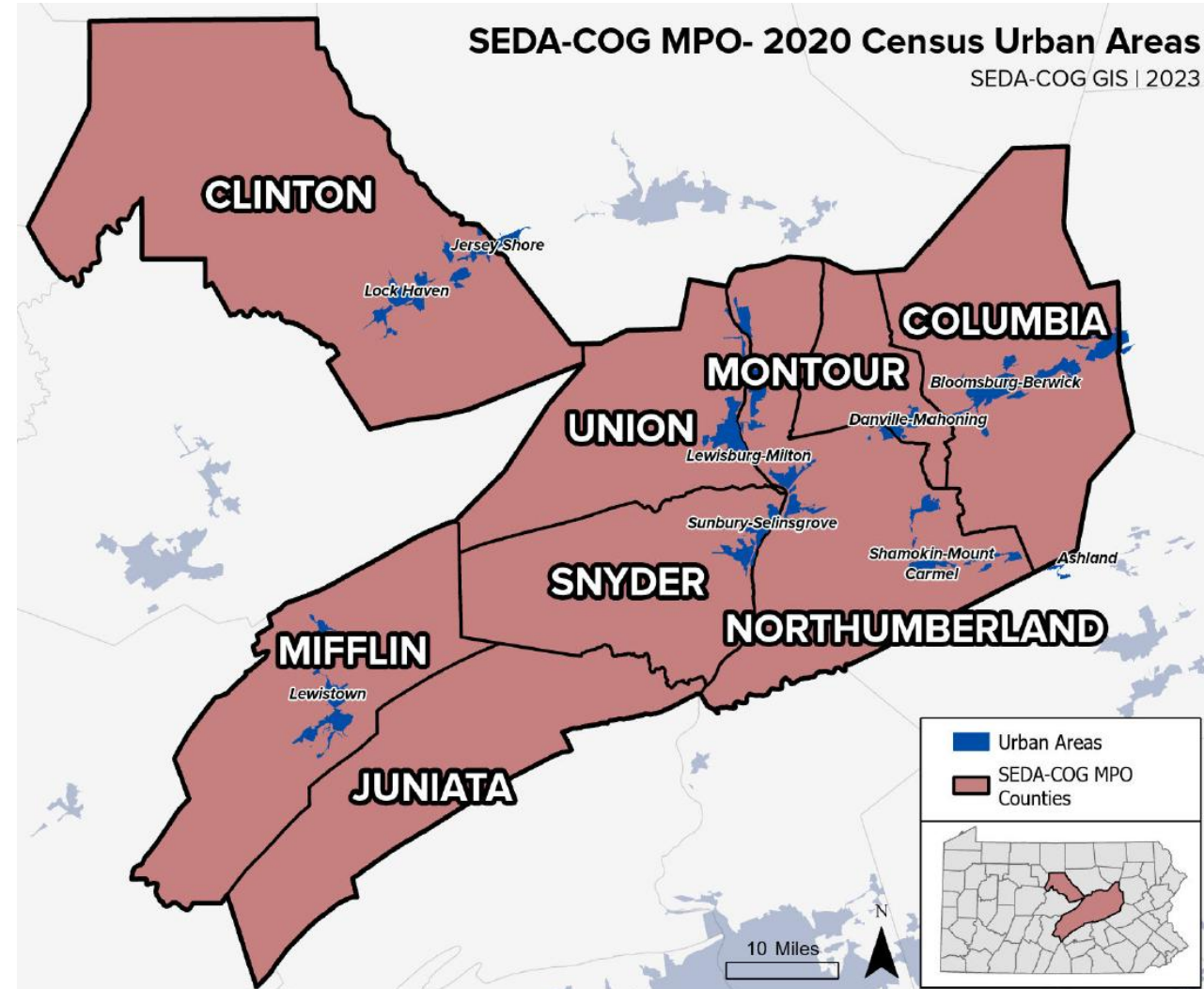


County Appointees	SEDA-COG Board Appointees	Municipal Appointees	PennDOT & SEDA-COG Staff
Stephen Gibson, Clinton County Planning	Michele Holman – Transit Interests, rabbittransit	Lisa Dooley, Town of Bloomsburg Manager	Mark Schultz, PennDOT District 2-0
Chris Anderson, Columbia County Emergency Management Agency	Bob Stoudt – Multimodal Interests, Montour Area Recreation Commission	Jack Kyttle, Borough of Berwick Public Works	Christoper King, PennDOT District 3-0
Brad Kerstetter, Juniata County Planning	Randy Karschner – Member of SEDA-COG Board, Columbia County		Nathan Walker, PennDOT Central Office
James Lettiere, Mifflin County Planning			Steve Herman, SEDA-COG Transportation Director
Greg Molter, Montour County Planning			
Justin Skavery, Northumberland County Planning			
Lincoln Kaufman, Snyder County Planning			
Shawn McLaughlin, Union County Planning			

# The SEDA-COG MPO Region



- 8 Counties
- 8 Urban Areas
- 177 Municipalities
- 2 PennDOT Engineering Districts
- 3,450 Square Miles
- 363,540 Residents (2023 ACS)
- 7,185 Linear Roadway Miles
- 9.9 Million Daily Vehicle Miles Traveled
- 2,283 Bridges
- 390+ Railroad Track Miles
- 4 Public Transit Operators
- 9 Airports
- 145 Miles of BicyclePA Routes



# Transportation Infrastructure



- Roads
- Bridges/Structures
- Signs, Signals, and Lighting
- Intelligent Transportation Systems (ITS)
- Active Transportation Facilities
- Transit Equipment
- Railroad Track and Bridges
- Airports/Runways
- Parking, Rest Areas, and Charging Stations



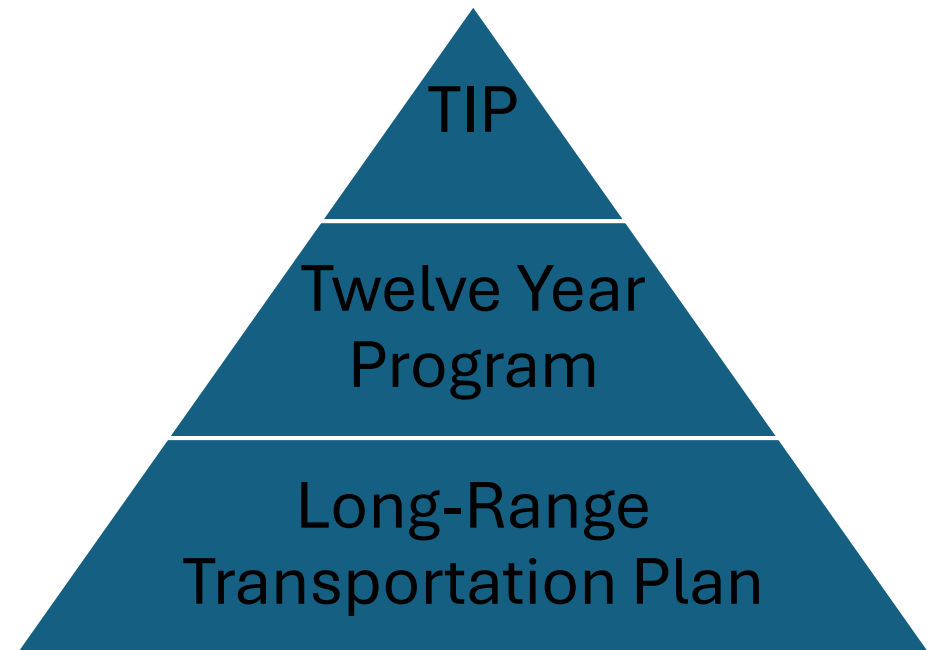
# Transportation Plans in Pennsylvania



There are 3 primary transportation plans at the state & regional levels:

- Long-Range Transportation Plan (LRTP)
- Twelve Year Program (TYP)
- Transportation Improvement Program (TIP)

*The TIP serves as the first 4 years of the LRTP and TYP.*

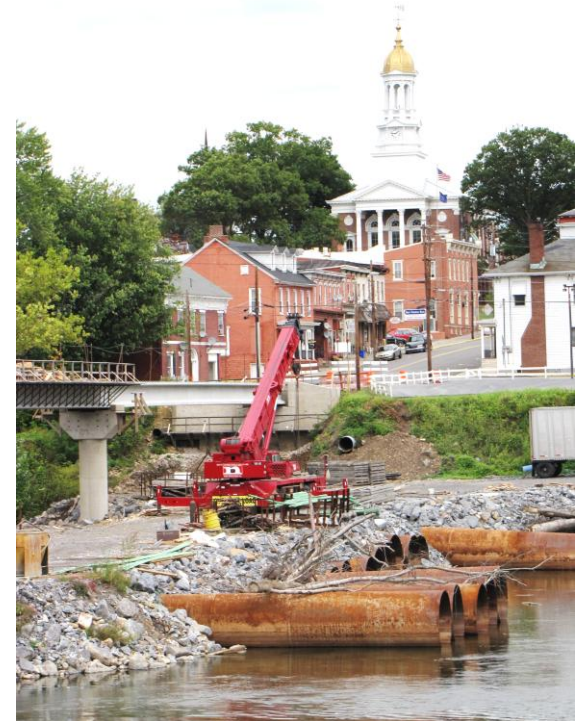


# TIP Essentials

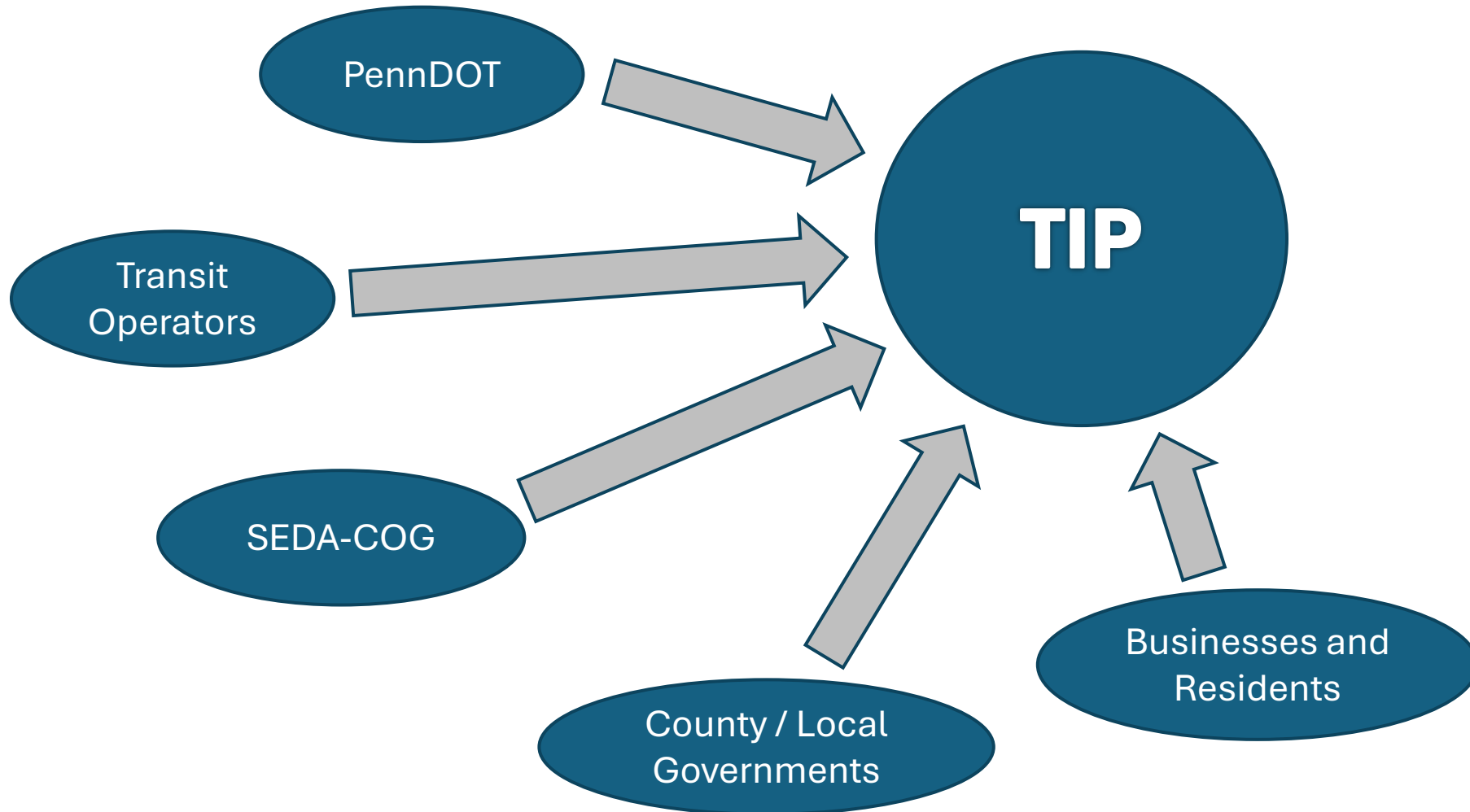


- List of the region's high-priority transportation projects
- Fiscally constrained by year; costs must account for inflation
- Multimodal
- Means for the public to shape ongoing transportation planning
- Updated every two years

*The TIP is a summary of the transportation projects to be studied, designed, and built during the next four years.*



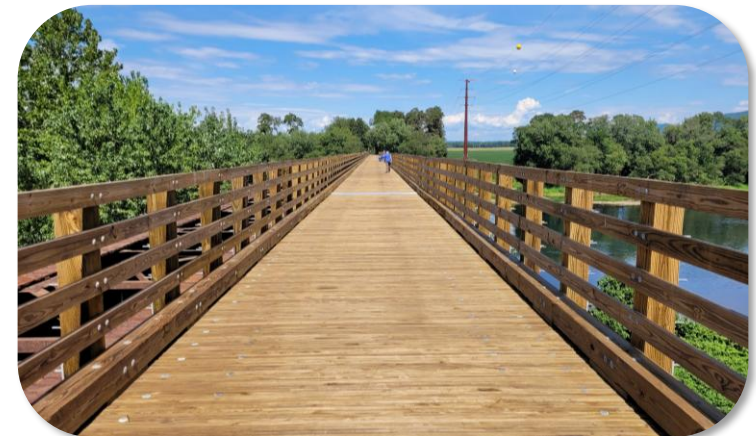
# How Are TIP Projects Identified?



# Typical Projects Funded on the TIP



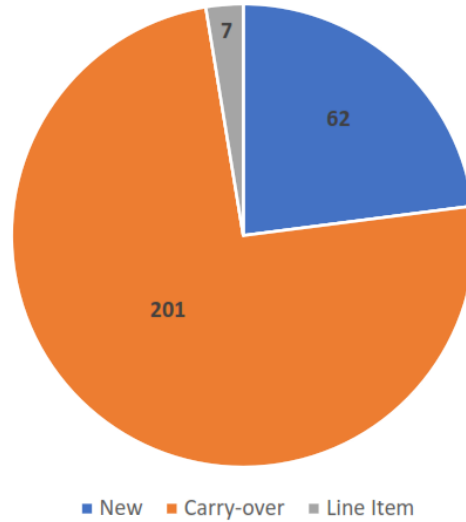
- Roadway Maintenance & Reconstruction
- Bridge Rehabilitation & Replacement
- Safety Improvements
- New Roadway Construction
- Bike/Ped & Streetscape Improvements
- Transit Improvements



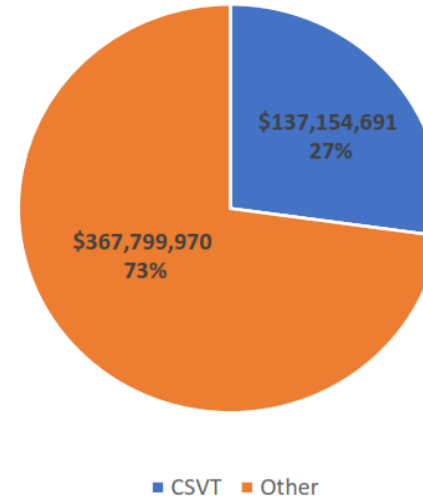
# Draft 2027-2030 SEDA-COG TIP Summary



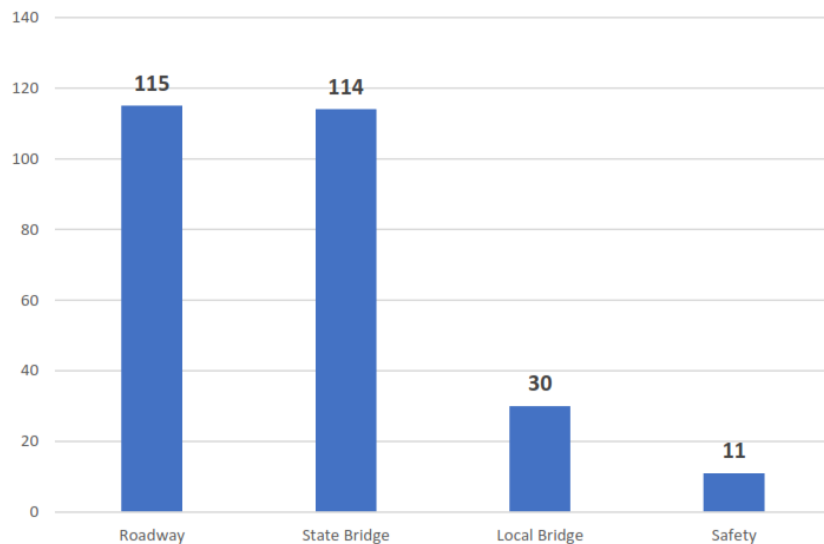
Projects by Status (270 total projects)



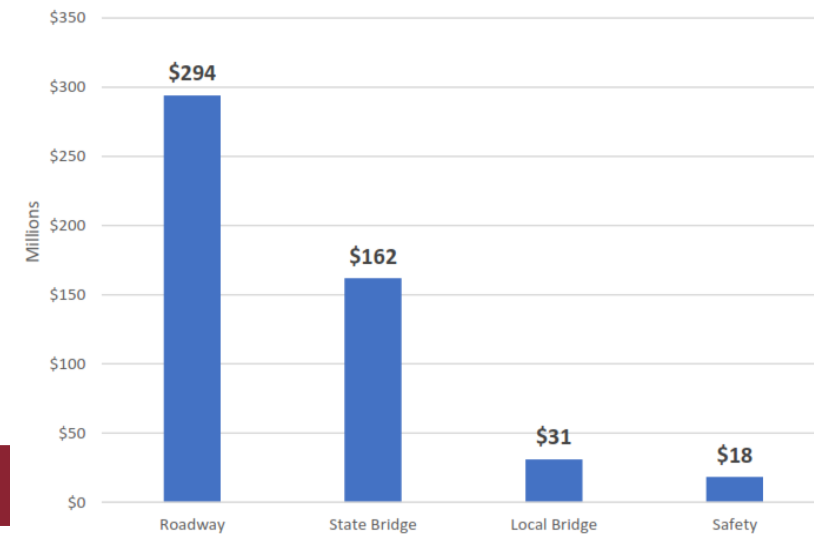
Highway/Bridge TIP Total Funding



Number of Projects by Type



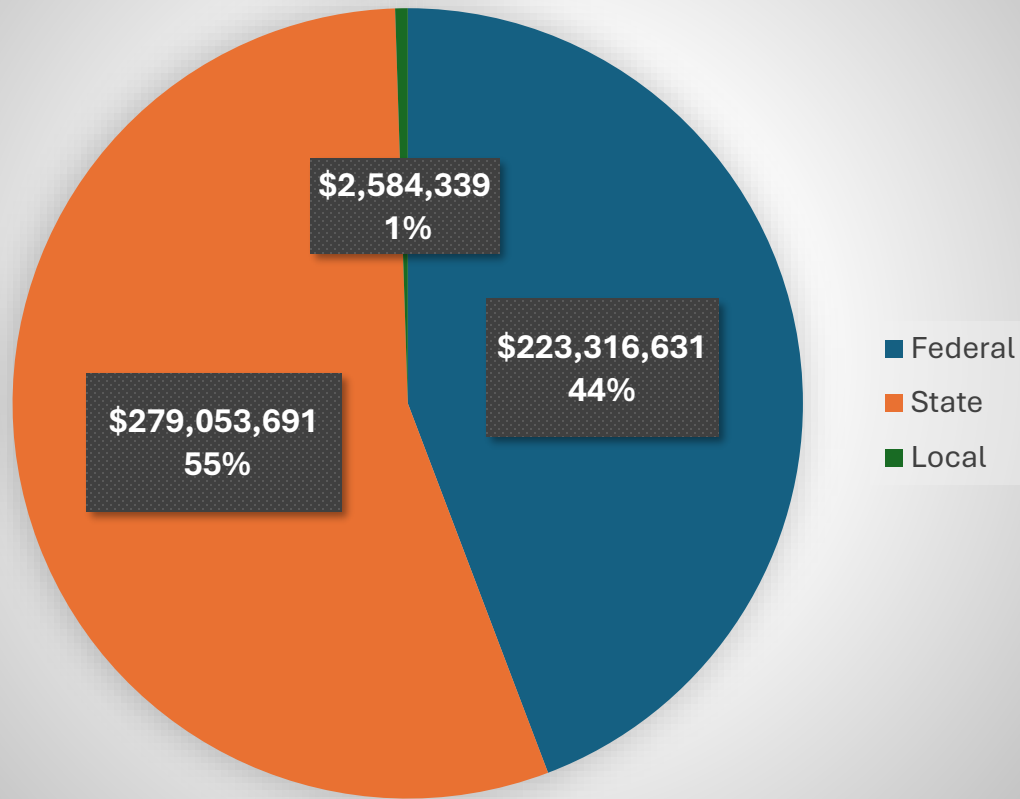
Funding by Project Type



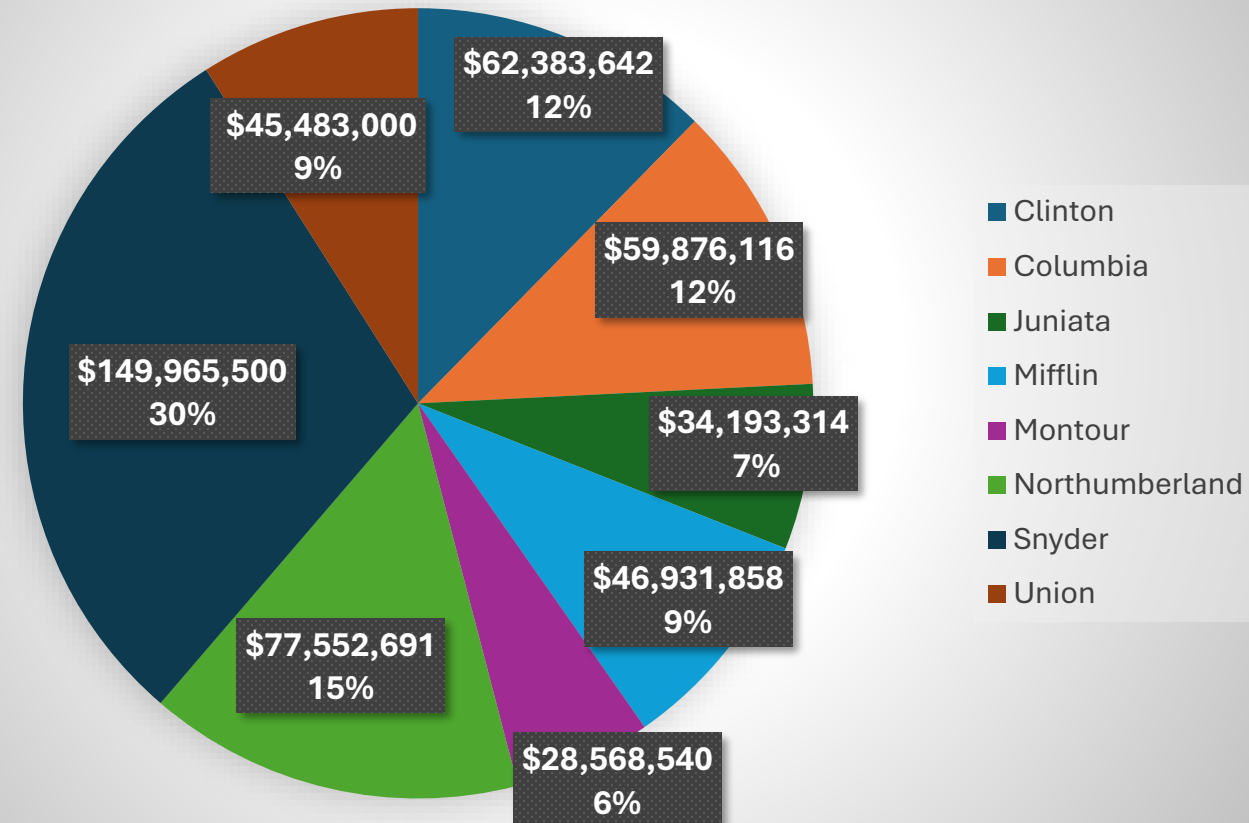
# Draft 2027-2030 SEDA-COG TIP Funding



## Highway/Bridge TIP Funds



## TIP Funds by County



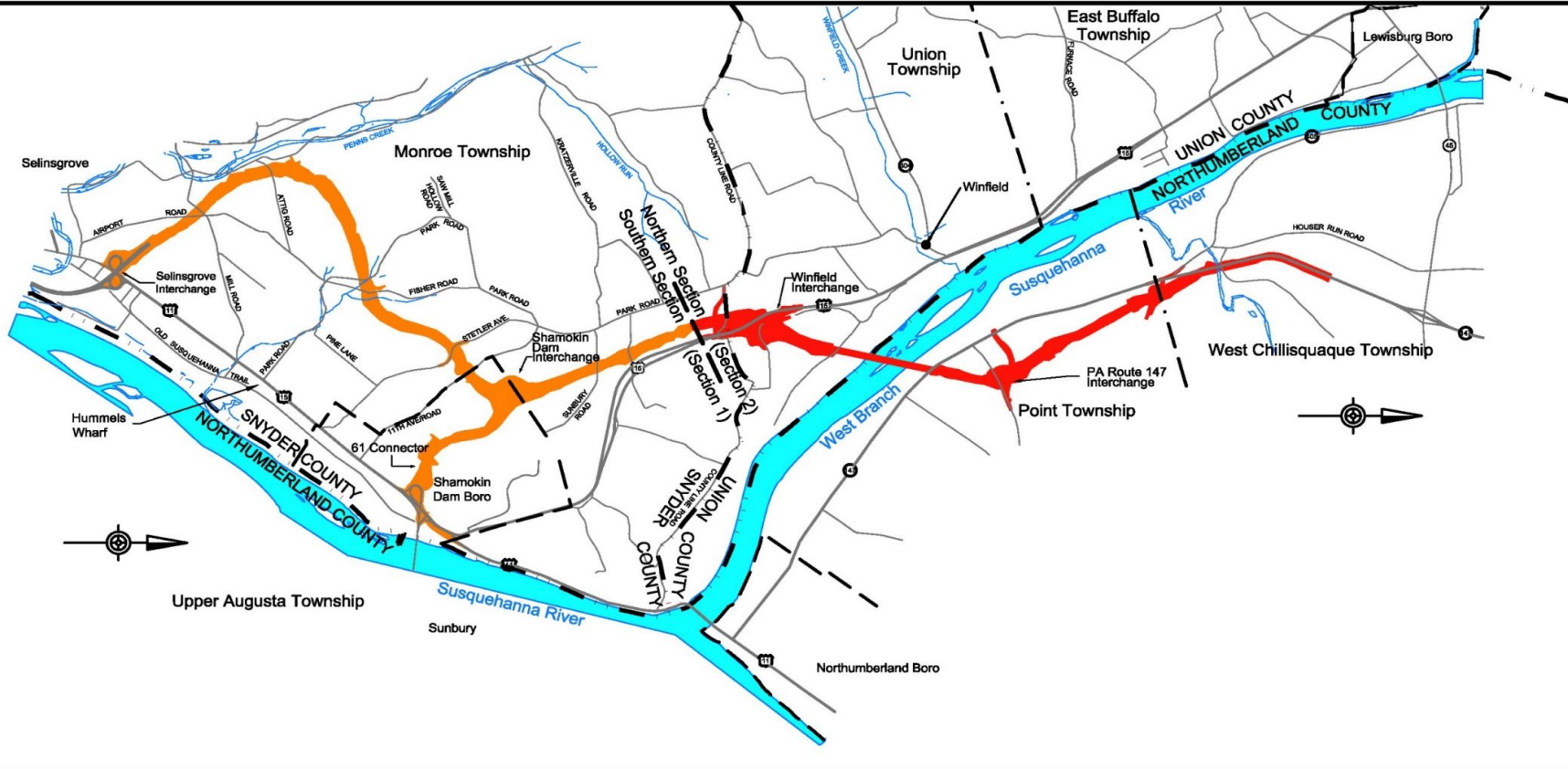
# Major Projects on the 2027-2030 TIP



- Central Susquehanna Valley Transportation Project (Snyder/Northumberland Counties)
- Rehabilitating US Route 220 and State Route 64 in Clinton County
- Rehabilitating State Route 118 Bridges over East and West Branches of Fishing Creek in Columbia County
- Restoring US Route 22/322 in Juniata County
- Resurfacing State Route 655 in Mifflin County
- Intersection Safety Improvements for State Routes 54 & 642 in Montour County
- Resurfacing State Route 405 in Northumberland County
- Resurfacing US Route 11 in Snyder County
- Resurfacing Interstate 80 in Union County



# Central Susquehanna Valley Transportation (CSVT) Project



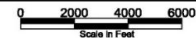
## Legend

- Southern Section (Section 1)
- Northern Section (Section 2)
- Borough Boundaries

**NOTE:**  
The proposed alignment shown on this map represents the design as of the May, 2006 approval of the re-evaluation of the Final Environmental Impact Statement.

## Central Susquehanna Valley Transportation Project

### Project Overview



# Central Susquehanna Valley Transportation (CSVT) Project



Looking southeast at CSVT bridge over 11<sup>th</sup> Ave.



Looking north towards Winfield interchange



Looking north at CSVT bridge over PA 61 Connector

# Draft SEDA-COG Transit TIP



	FFY 2027	FFY 2028	FFY 2029	FFY 2030	Total
<b>Call A Ride Service, Inc.</b>	\$559,000	\$443,000	\$553,000	\$355,000	\$1,910,000
<b>Geisinger Health System</b>	\$1,136,000	\$1,193,000	\$1,252,000	\$1,315,000	\$4,896,000
<b>Lower Anthracite Transit System</b>	\$80,000	\$410,000	\$0	\$0	\$490,000
<b>Totals</b>	\$1,775,000	\$2,046,000	\$1,805,000	\$1,670,000	\$7,296,000



# Draft 2027-2030 TIP Project Locations



Enter search here...

Maps



Layers

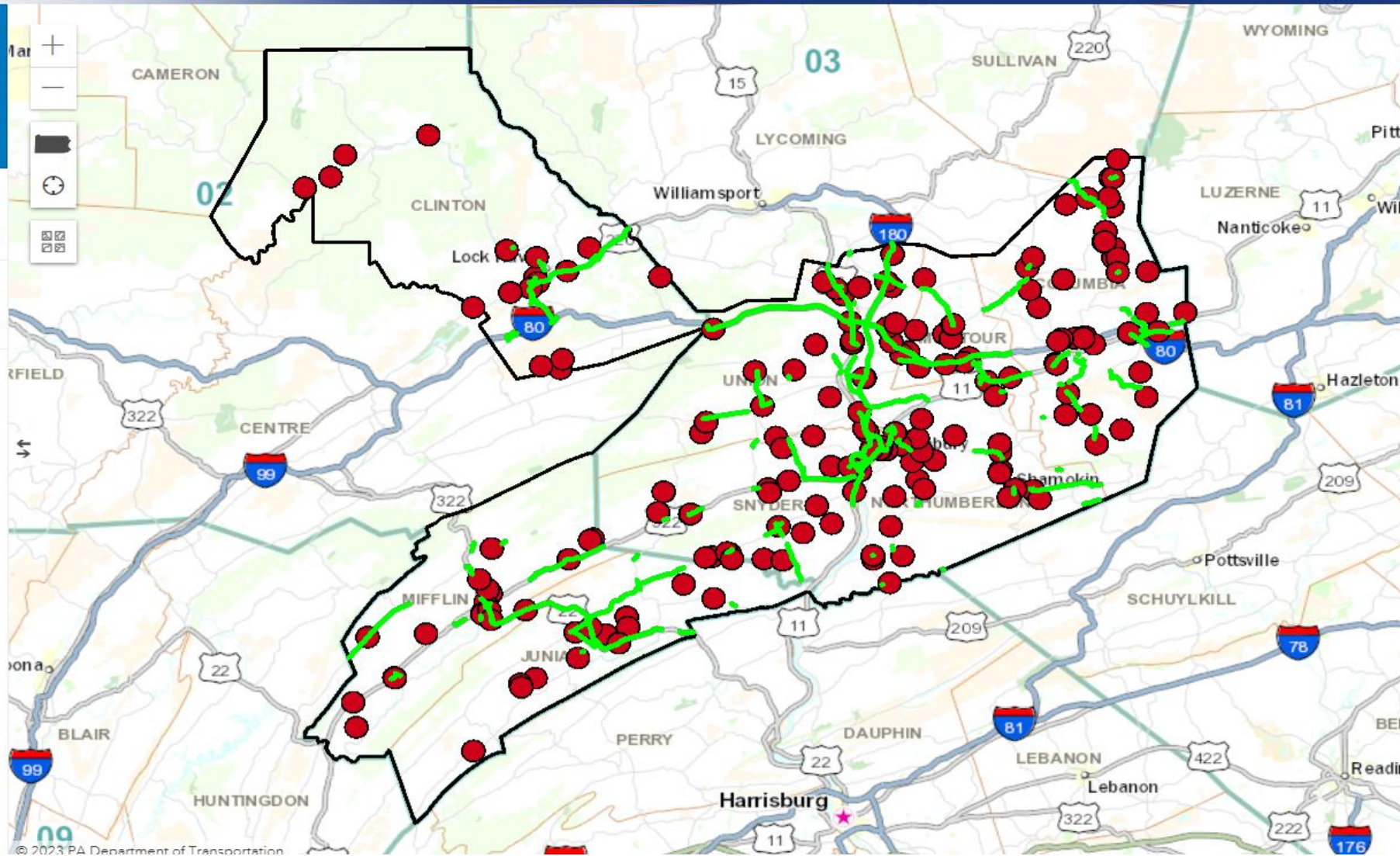
Change Area of Interest

Tools

## 2027 SEDA-COG TIP Map

Show map description

-  MPMS Draft Tip - All
-  Planning Partner: SEDA-COG



# How Does the TIP Change?



- The TIP is comprehensively updated every two years
  - The open comment period is relative to an update comprising projects with funding over the years 2027-2030
  - Input can be provided for updates and continuously to the **State Transportation Commission** – see [www.talkpatransportation.com](http://www.talkpatransportation.com) to learn more and get involved
- The TIP is modified between biennial updates
  - New projects can be added as funding is made available
  - Current projects can be changed (cost overruns/savings, project deferrals, project cancellations)

# Get Involved with the TIP



The TIP relies on public input to ensure the projects and programs it funds support the future of our region and the people who live, work, and play within it. SEDA-COG is committed to understanding your transportation needs, concerns, and ideas. Your local experiences and knowledge play an active role in shaping our region's priority projects.

## What?

Provide your thoughts on projects listed in the TIP.

## How?

Read about TIP projects and send your comments (see suggestions on the following slide regarding effective comments).

## When?

Year-round. There are specific opportunities like now to comment on a new TIP before it's finalized, and on amendments considered at MPO meetings.

## Where?

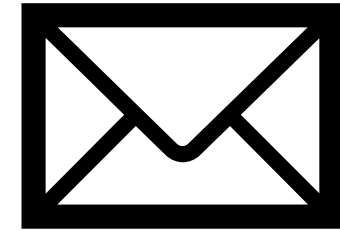
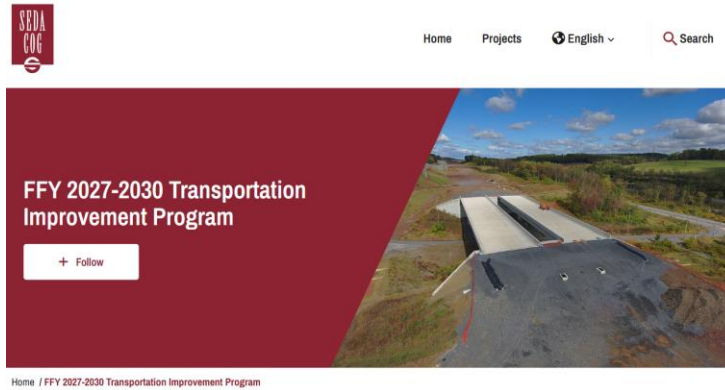
Online, email, by mail, in person at a meeting or event.

# How to Craft Effective Public Comments



- Read project descriptions to understand the project location, type, schedule, and intended outcomes
- Be **concise**
- Try to **address tradeoffs** and opposing views
- **Support your claims** with sound reasoning, documented evidence, and/or how your community will be impacted
- If you disagree with a project, **suggest an alternative** and include an explanation and/or analysis of how your alternative might meet the same objective or be more effective
- Types of comments to provide:
  - Comment/support/opposition specific to a project
  - Comment/question about the TIP development process
  - Questions about a project/program
  - Meeting the needs of the region
  - Mix of selected projects and location
  - Feedback on documents, webpages, webmaps

# Submitting a Public Comment on the TIP



## Online

[www.engage.seda-cog.org/ffy-2027-2030-transportation-improvement-program](http://www.engage.seda-cog.org/ffy-2027-2030-transportation-improvement-program)

[www.seda-cog.org/departments/transportation/transportation-improvement-program](http://www.seda-cog.org/departments/transportation/transportation-improvement-program)

## Email

[kmclaughlin@seda-cog.org](mailto:kmclaughlin@seda-cog.org)

## Traditional Mail

Address mail comments to:

Kristin McLaughlin  
SEDA-COG MPO  
201 Furnace Road  
Lewisburg, PA 17837

# 2027-2030 TIP Schedule



- **May 22, 2026:** Close public comment period
- **June 12, 2026:** SEDA-COG MPO meeting to adopt TIP
- **June 12, 2026:** SEDA-COG submits TIP to PennDOT
- **August 2026:** State Transportation Commission approval
- **September 2026:** Federal Highway Administration & Federal Transit Administration approval
- **October 1, 2026:** New TIP takes effect

# Thank You!



For more information, contact:

**Steve Herman, AICP**

Program Director, Transportation Planning

SEDA-COG

(570) 524-4491 ext. 7242

[sherman@seda-cog.org](mailto:sherman@seda-cog.org)

**Kristin McLaughlin, AICP**

Principal Program Analyst, Transportation Planning

SEDA-COG

(570) 524-4491 ext. 7277

[kmclaughlin@seda-cog.org](mailto:kmclaughlin@seda-cog.org)



# Questions & Discussion

