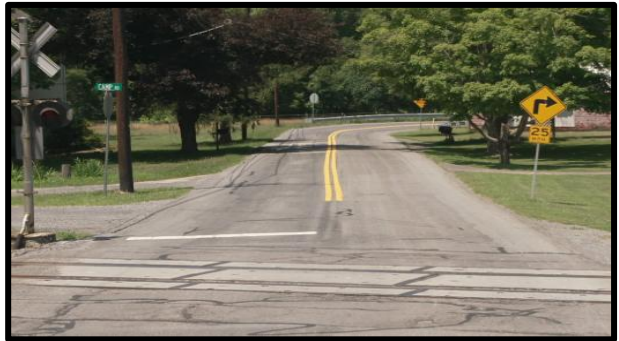


SEDA-COG Metropolitan Planning Organization Annual Listing of Obligated Projects Federal Fiscal Year 2025



Top left photo: MPMS 85290 location
Top right photo: MPMS 11352 location
Bottom right photo: MPMS 121840 location
Bottom left photo: MPMS 82774 location



**Prepared by: SEDA-Council of Governments
December 2025**

www.seda-cog.org

SEDA-COG Metropolitan Planning Organization (MPO)
Annual Listing of Federally Obligated Projects
FFY 2025 (October 1, 2024 – September 30, 2025)

SEDA-COG MPO

The SEDA-COG MPO is the official organization through which federal transportation funds are distributed, planned, programmed, and implemented in Clinton, Columbia, Juniata, Mifflin, Montour, Northumberland, Snyder, and Union counties. The SEDA-COG MPO operates via an agreement with PennDOT to approve studies and capital improvements for highways, bridges, transit, railroads, bicycle/pedestrian facilities and other transportation concerns. Four primary documents are developed and approved by the MPO: the region's Long Range Transportation Plan (LRTP), Transportation Improvement Program (TIP), Public Participation Plan (PPP) and Unified Planning Work Program (UPWP). In executing its work, the MPO strives to provide a balanced transportation system for the maximum benefit of people, businesses, and communities.

Purpose of this Report

The current federal transportation law, the Infrastructure Investment and Jobs Act (IIJA), also known as the "Bipartisan Infrastructure Law," requires MPOs to publish an Annual List of Obligated Projects, reporting on the federal funding obligations for projects during the federal fiscal year from October 1 to September 30. The federal regulation states, in plain language, that:

"An annual listing of projects, including investments in pedestrian walkways and bicycle transportation facilities, for which federal funds have been obligated in the preceding program year shall be published or otherwise made available through the cooperative effort of the state, public transportation operator(s), and metropolitan planning organization. The listing shall be consistent with the categories identified in the TIP."

The Federal Highway Administration defines obligation as the "federal government's legal commitment (promise) to pay or reimburse states or other entities for the federal share of a project's eligible costs." Thus, an obligated project is one that has been approved by the federal government for reimbursement, though not necessarily reimbursed yet. This reimbursement can be for projects that have been initiated in previous years or will not be completed until future years, and the final cost of a project may be different from the amount obligated. Funding can also be "de-obligated" from projects in response to lower-than-expected costs, project cancellation, or other factors, and these released resources are often redirected to other projects.

This report responds to the directive set forth in federal statute. It lists all federally funded transportation projects in the SEDA-COG MPO region that were obligated during Federal Fiscal Year 2025 (October 1, 2024 to September 30, 2025).

During FFY 2025, the SEDA-COG MPO had a total of 75 obligations worth \$75,160,852.

Project Locations:

The below map shows the locations of mappable projects that were obligated during FFY 2025.

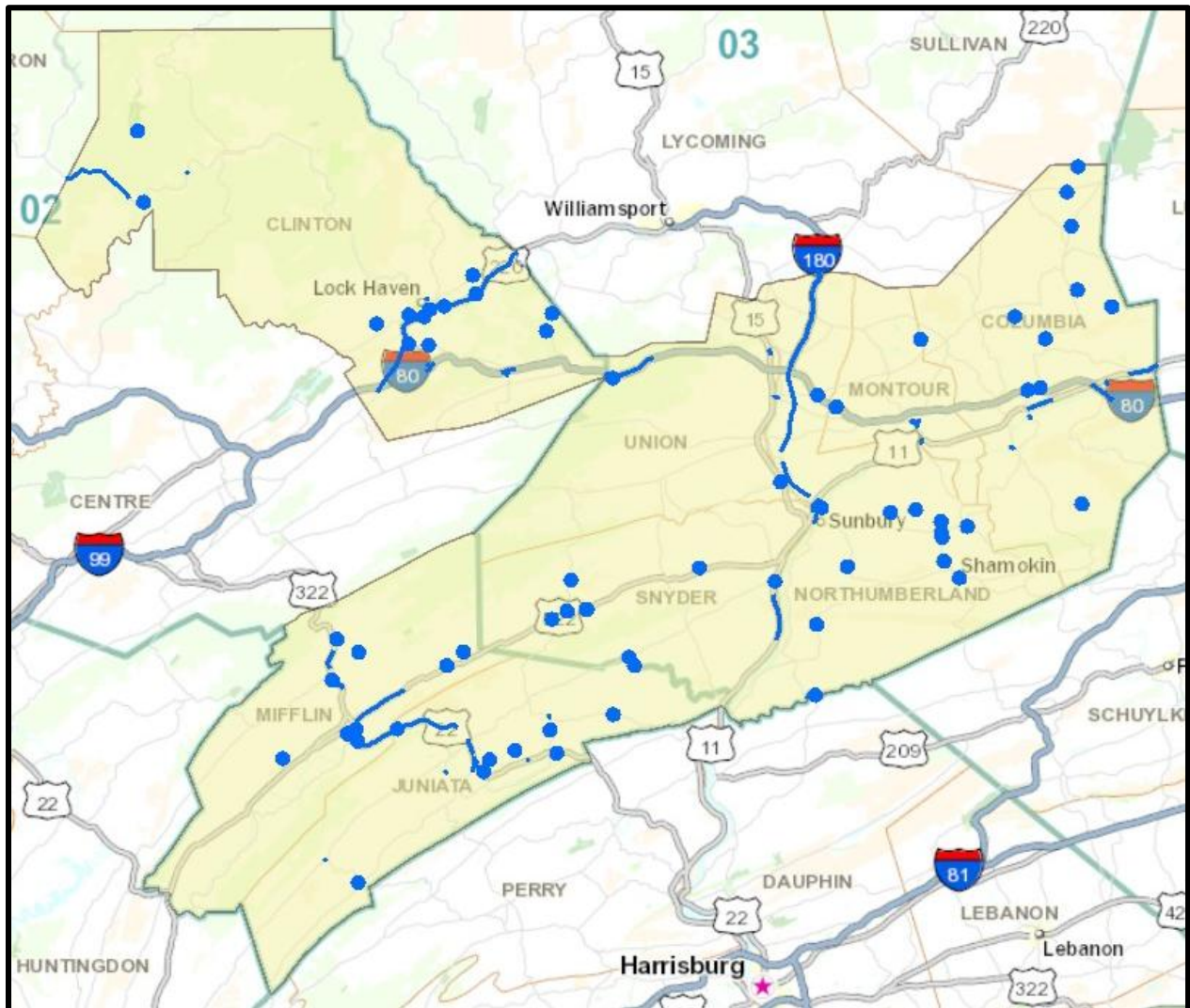


Table Definitions:

County is the county in which the project is located.

Fed. Funds Remaining is the amount of federal funding remaining and available for subsequent years.

MPMS stands for Multi-modal Project Management System number. It is an inventory of Highway/Bridge and Rail/Freight projects that contains information about project phase milestones, funding, and status. Additional project information can be found at PennDOT's [One Map](#) interactive online map and searching by the MPMS # as the Asset ID. This interactive map also provides project search by region, route, address or intersection options and gives project details such as let date, estimated completion date, etc.

Obligated is the amount of obligated federal funds for the FFY of this report.

Phase is the Project Phase: PE (Preliminary Engineering); FD (Final Design); UTL (Utilities); ROW (Right of Way); CON (Construction); Study.

Prog. Total is the amount of federal funds programmed for the project.

Abbreviations Used in Project Titles and Descriptions:

ADA – Americans with Disabilities Act
BOF – Bridge Off-System (Bridge off of the federal aid system)
Br – Bridge
CCTV – Closed Circuit Television
Cr or Crk – Creek
DMS – Dynamic Message Sign
D3 – PennDOT Engineering District 3
EB – East Bound
HFST – High Friction Surface Treatment
HTCMB – High-Tension Cable Median Barrier
I – Interstate Route Number
LED – Light Emitting Diode
NS – Norfolk Southern Railroad
RR – Railroad
RRX – Railroad Crossing
Sec – Section
SR – State Route
SVRR – Shamokin Valley Railroad
T – Township Route Number
Trib – Tributary
WB – West Bound

FFY 2025 SEDA-COG TIP
FHWA Obligation Report
Obligations 10/1/2024 to 9/30/2025

MPMS	PROJECT TITLE	PROJECT DESCRIPTION	PROJECT ADMINISTRATOR	PHASE	DISTRICT	COUNTY	STATE ROUTE	OBLIGATION* FFY 2025	PROG. TOTAL FFY 2025 TO 2028	FED FUNDS REMAINING
112317	I-80 ICM (Exit 173 to 185)	ITS work will include Integrated Corridor Management along I-80 between Exit 173 and Exit 185 along with parallel corridors of PA-64 and PA-477. Work includes upgrading signal controllers for unified command and control, installation of (1) CCTV, (1) new DMS, and installation of (3) Type A DMS in Centre County.	PENNDOT	Preliminary Engineering	2	Clinton	80	\$300,000	\$300,000	\$0
114298	SR 120 West Port Fill Slide	Highway Restoration/Fill Slide repair on State Route 120, Village of West Port in Noyes Township, Clinton County.	PENNDOT	Final Design	2	Clinton	120	\$347,782	\$347,800	\$18
114298	SR 120 West Port Fill Slide	Highway Restoration/Fill Slide repair on State Route 120, Village of West Port in Noyes Township, Clinton County.	PENNDOT	Utility	2	Clinton	120	\$10,000	\$10,000	\$0
114298	SR 120 West Port Fill Slide	Highway Restoration/Fill Slide repair on State Route 120, Village of West Port in Noyes Township, Clinton County.	PENNDOT	Right of Way	2	Clinton	120	\$50,000	\$50,000	\$0
122475	SR 120 Fill Slopes	Roadway and slope stabilization work along a 6.5 mile stretch of State Route 120 within Bucktail State Park, near Keating, in East Keating Township, Clinton County.	PENNDOT	Preliminary Engineering	2	Clinton	120	\$360,000	\$360,000	\$0
110355	2022 Bridge Preservation	Bridge Improvements on State Route 150 over Bald Eagle Creek in Bald Eagle Township, State Route 150 over Chatham Run in Dunstable Township, and State Route 220 over Fishing Creek in Lamar Township all in Clinton County.	PENNDOT	Construction	2	Clinton	150	\$37,000	\$73,600	\$36,600
119232	SEDACOG Concrete Preservation	Concrete Preservation on State Route 220 in Clinton County, State Route 322 in Mifflin County, & State Routes 75 & 22 near the Port Royal on/off ramps in Juniata County.	PENNDOT	Construction	2	Clinton	220	\$270,236	\$270,300	\$64
120763	SR 220 Concrete Preservation	Concrete Preservation at various locations on State Route 220 as well as Interstate 80 ramps near Mackeyville in Avis Borough & Lamar Township, Clinton County.	PENNDOT	Preliminary Engineering	2	Clinton	220	\$420,000	\$444,024	\$24,024
119953	SR 220 over Lower Creek Rd	Bridge Rehabilitations on State Route 220 over T-375 Lower Creek Road in Castanea Township.	PENNDOT	Construction	2	Clinton	220	\$82,305	\$82,305	\$0
119411	SR 220 Youngdale Bridges	Bridge Rehabilitation on the two state route 220 structures over McElhattan Creek in Wayne Township, Clinton County.	PENNDOT	Construction	2	Clinton	220	\$1,916,825	\$2,546,058	\$629,233
121645	US 220 Bridge Epoxy Project	Bridge Improvements on five (5) US 220, Frank D. O'Reilly Hwy, Bridge Structures in Castenea Township, Clinton County.	PENNDOT	Preliminary Engineering	2	Clinton	220	\$150,000	\$200,000	\$50,000
101535	Bridge over Long Run	Bridge Replacement on State Route 477 over Long Run in Lamar Township, Clinton County.	PENNDOT	Construction	2	Clinton	477	\$1,485,260	\$1,879,188	\$393,928
85149	SR 0880 Rauchtown Cr II	Bridge improvements on State Route 880 over Rauchtown Creek in Crawford Township, Clinton County.	PENNDOT	Construction	2	Clinton	880	\$510,835	\$620,044	\$109,209
3850	SR 1001 Improvements	Safety Improvement, resurfacing, and retaining wall with pedestrian facilities, on State Route 1001 (Farrandsville Road) from Lockport Heights/Jay Street Bridge to Township Road 359, West River Drive in Woodward Township, Village of Lockport in Clinton County.	PENNDOT	Construction	2	Clinton	1001	\$170,000	\$175,950	\$5,950
3840	Rauchtown Bridge	Bridge Improvement on State Route 2010 over Rauchtown Creek in Crawford Township, Clinton County.	PENNDOT	Preliminary Engineering	2	Clinton	2010	\$20,000	\$20,000	\$0
69038	Bridge over Laurel Run	Bridge Replacement on State Route 2019 over Laurel Run in Bald Eagle Township, Clinton County.	PENNDOT	Construction	2	Clinton	2019	\$100,000	\$100,000	\$0
120682	SR 0022 HTCMB	Safety Improvements consisting of installing high-tension cable median barrier on State Route 22 in Fermanagh Township, Juniata County.	PENNDOT	Construction	2	Juniata	22	\$827,080	\$827,080	\$0
69423	2023 SEDACOG Bridge Preservation	Bridge Improvements on 6 bridges on State Route 22 in Juniata County: 2 bridges on State Route 22 over State Route 35 in Fermanagh Township, 2 bridges on State Route 22 over State Route 2006 in Fermanagh Township, and 2 bridges on State Route 22 over State Route 2003 and Doe Run in Walker Township, Juniata County.	PENNDOT	Construction	2	Juniata	22	\$139,652	\$139,652	\$0
116886	2025 SEDA-COG Bridge Preservation	Bridge Improvements on State Route 22 over State Route 2007 and Locust Run in Walker Township, and both structures on State Route 22 over State Route 333 in Delaware Township, Juniata County.	PENNDOT	Preliminary Engineering	2	Juniata	22	\$110,000	\$110,000	\$0
116886	2025 SEDA-COG Bridge Preservation	Bridge Improvements on State Route 22 over State Route 2007 and Locust Run in Walker Township, and both structures on State Route 22 over State Route 333 in Delaware Township, Juniata County.	PENNDOT	Construction	2	Juniata	22	\$4,466,471	\$6,068,038	\$1,601,567
119410	SR 22 Thompsontown Bridges	Bridge Rehabilitations on two structures over Township Route 466 in Delaware Township, Juniata County.	PENNDOT	Construction	2	Juniata	22	\$4,971,961	\$4,971,961	\$0
120137	SR 35 HFST	High Friction Surface Treatment application to State Route 35 in Tuscarora Township, Juniata County.	PENNDOT	Construction	2	Juniata	35	\$10,000	\$10,000	\$0
114303	2025 SEDA-COG Bridge Preservation	Bridge improvements on State Route 2004 in Derry Township, Mifflin County and State Route 35 in Monroe Township, Juniata County.	PENNDOT	Preliminary Engineering	2	Juniata	35	\$614,578	\$711,422	\$96,844
4160	Stoney Run Bridge	Bridge Replacement on State Route 235 over Stoney Run in Greenwood Township, Juniata County.	PENNDOT	Preliminary Engineering	2	Juniata	235	\$50,000	\$50,000	\$0
4160	Stoney Run Bridge	Bridge Replacement on State Route 235 over Stoney Run in Greenwood Township, Juniata County.	PENNDOT	Final Design	2	Juniata	235	\$240,400	\$300,000	\$59,600

MPMS		PROJECT TITLE	PROJECT DESCRIPTION	PROJECT ADMINISTRATOR	PHASE	DISTRICT	COUNTY	STATE ROUTE	OBLIGATION* FFY 2025	PROG. TOTAL FFY 2025 TO 2028	FED FUNDS REMAINING
4160	Stoney Run Bridge	Bridge Replacement on State Route 235 over Stoney Run in Greenwood Township, Juniata County.	PENNDOT	Utility	2	Juniata	235	\$56,963	\$56,963	\$0	
4160	Stoney Run Bridge	Bridge Replacement on State Route 235 over Stoney Run in Greenwood Township, Juniata County.	PENNDOT	Right of Way	2	Juniata	235	\$57,963	\$57,963	\$0	
120113	SR 235 High Friction Surface Treatment	High Friction Surface Treatment application to State Route 235 in Delaware Township, Juniata County.	PENNDOT	Construction	2	Juniata	235	\$31,800	\$31,800	\$0	
119418	SR 333 HFST	Applying a High Friction Surface Treatment to State Route 333 in Milford Township, Juniata County.	PENNDOT	Construction	2	Juniata	333	\$45,395	\$45,395	\$0	
69512	SR 0850 Little Laurel Run	Bridge Replacement on State Route 850 over Little Laurel Run in Tuscarora Township, Juniata County.	PENNDOT	Final Design	2	Juniata	850	\$50,000	\$270,000	\$220,000	
69512	SR 0850 Little Laurel Run	Bridge Replacement on State Route 850 over Little Laurel Run in Tuscarora Township, Juniata County.	PENNDOT	Utility	2	Juniata	850	\$63,654	\$63,654	\$0	
69512	SR 0850 Little Laurel Run	Bridge Replacement on State Route 850 over Little Laurel Run in Tuscarora Township, Juniata County.	PENNDOT	Right of Way	2	Juniata	850	\$42,436	\$42,436	\$0	
109717	SR 2003 over Doe Run II	Bridge Improvement on State Route 2003 over Doe Run in Walker Township, Juniata County.	PENNDOT	Preliminary Engineering	2	Juniata	2003	\$20,000	\$20,000	\$0	
114302	2024 SEDA-COG Bridge Preservation	Bridge Rehabilitations on State Route 4001 over Kettle Creek in Leidy Township, Clinton County, State Route 2006 over Delaware Creek in Delaware Township, Juniata County, State Route 2003 over Doe Run in Walker Township, Juniata County and Bridge Preservation on State Route 103 in Lewistown Borough, Mifflin County.	PENNDOT	Construction	2	Juniata	2006	\$1,487,522	\$1,487,522	\$0	
85188	SR 2007 over Doe Run	Bridge Improvements on State Route 2007 over Doe Run in Walker Township, Juniata County.	PENNDOT	Preliminary Engineering	2	Juniata	2007	\$245,578	\$245,578	\$0	
4096	Mahantango Creek Bridge	Bridge Replacement on State Route 2019 over Mahantango Creek in Monroe Township, Juniata County.	PENNDOT	Final Design	2	Juniata	2019	\$26,106	\$26,106	\$0	
4096	Mahantango Creek Bridge	Bridge Replacement on State Route 2019 over Mahantango Creek in Monroe Township, Juniata County.	PENNDOT	Utility	2	Juniata	2019	\$86,947	\$86,947	\$0	
4096	Mahantango Creek Bridge	Bridge Replacement on State Route 2019 over Mahantango Creek in Monroe Township, Juniata County.	PENNDOT	Right of Way	2	Juniata	2019	\$86,947	\$86,947	\$0	
95971	T-439 ov Kishacoquillas	Bridge Replacement on Township Road 439, over Kishacoquillas Creek in Brown Township, Mifflin County.	PENNDOT	Utility	2	Mifflin		\$340,000	\$340,000	\$0	
95971	T-439 ov Kishacoquillas	Bridge Replacement on Township Road 439, over Kishacoquillas Creek in Brown Township, Mifflin County.	PENNDOT	Right of Way	2	Mifflin		\$76,800	\$76,800	\$0	
4582	Lewistown Narrows Rehab	Highway Restoration on State Routes 22 & 322, Lewistown Narrows, in various municipalities of Mifflin and Juniata Counties.	PENNDOT	Construction	2	Mifflin	22	\$5,202,000	\$5,202,000	\$0	
122474	Mann's Narrows Wall/Rock Slide	Roadway and slope stabilization work to mitigate rock falls on State Route 322 and State Route 1005, near Reedsville, in Brown Township, Mifflin County.	PENNDOT	Preliminary Engineering	2	Mifflin	322	\$360,000	\$408,000	\$48,000	
118529	SR 322 Twin Bridges HFST	High Friction Surface Treatment on SR 322, Twin Bridges, in Derry Township, Mifflin County.	PENNDOT	Construction	2	Mifflin	322	\$4,996	\$5,000	\$4	
114010	SR 522 Betterment	Highway Restoration on US Route 522 in Lewistown Borough, Derry and Decatur Townships, Mifflin County.	PENNDOT	Construction	2	Mifflin	522	\$254,400	\$254,400	\$0	
85290	SR 0522 over Jacks Creek	Bridge Improvement of US Route 522 over Jacks Creek in Decatur Township, Mifflin County.	PENNDOT	Construction	2	Mifflin	522	\$3,122,900	\$3,122,900	\$0	
4551	SR 1002 over Honey Creek	Bridge Improvements on State Route 1002 over Honey Creek, also known as Dry Creek, in Armagh Township, Mifflin County.	PENNDOT	Preliminary Engineering	2	Mifflin	1002	\$97,709	\$0	\$(97,709)	
91608	SR 1012 Laurel Run Br	Bridge improvement on State Route 1012 over Laurel Run in Armagh Township, near Milroy, Mifflin County.	PENNDOT	Construction	2	Mifflin	1012	\$509,000	\$509,000	\$0	
113151	SR 2008 over Br Jacks Creek	Bridge Improvement on State Route 2008 over Branch Jacks Creek in Decatur Township, Mifflin County.	PENNDOT	Final Design	2	Mifflin	2008	\$358,216	\$358,216	\$0	
113151	SR 2008 over Br Jacks Creek	Bridge Improvement on State Route 2008 over Branch Jacks Creek in Decatur Township, Mifflin County.	PENNDOT	Utility	2	Mifflin	2008	\$89,554	\$103,375	\$13,821	
113151	SR 2008 over Br Jacks Creek	Bridge Improvement on State Route 2008 over Branch Jacks Creek in Decatur Township, Mifflin County.	PENNDOT	Right of Way	2	Mifflin	2008	\$40,000	\$40,000	\$0	
85299	Lewistown Bridges	Bridge Improvements on State Route 3006 over State Route 8005 in Lewistown Borough, Mifflin County.	PENNDOT	Preliminary Engineering	2	Mifflin	3006	\$10,000	\$164,581	\$154,581	
119996	SR 3006 over Jacks Creek	Bridge Improvements on State Route 3006 Eastbound and Westbound over Jacks Creek in Lewistown Borough, Mifflin County.	PENNDOT	Preliminary Engineering	2	Mifflin	3006	\$393,945	\$393,945	\$0	
107019	Adjacent Box Beam Bridge Bundle	Local Bridge Rehabilitation on Township Road #583 (Bottom Road) over Mud Run in Greenwood Township, Columbia County, Township Road #631 (Paperdale Road) over Raven Creek in the Stillwater Borough, Columbia County, Township Road #312 (Market Street) over East Branch of Fishing Creek in Sugarloaf Township, Columbia County, and Township Road #721 (Hackett Road) over Fishing Creek in Sugarloaf Township, Columbia County.	PENNDOT	Final Design	3	Columbia		\$300,000	\$300,000	\$0	

MPMS	PROJECT TITLE	PROJECT DESCRIPTION	PROJECT ADMINISTRATOR	PHASE	DISTRICT	COUNTY	STATE ROUTE	OBLIGATION* FFY 2025	PROG. TOTAL FFY 2025 TO 2028	FED FUNDS REMAINING
107019	Adjacent Box Beam Bridge Bundle	Local Bridge Rehabilitation on Township Road #583 (Bottom Road) over Mud Run in Greenwood Township, Columbia County, Township Road #631 (Paperdale Road) over Raven Creek in the Stillwater Borough, Columbia County, Township Road #312 (Market Street) over East Branch of Fishing Creek in Sugarloaf Township, Columbia County, and Township Road #721 (Hackett Road) over Fishing Creek in Sugarloaf Township, Columbia County.	PENNDOT	Utility	3	Columbia		\$43,000	\$43,000	\$0
107019	Adjacent Box Beam Bridge Bundle	Local Bridge Rehabilitation on Township Road #583 (Bottom Road) over Mud Run in Greenwood Township, Columbia County, Township Road #631 (Paperdale Road) over Raven Creek in the Stillwater Borough, Columbia County, Township Road #312 (Market Street) over East Branch of Fishing Creek in Sugarloaf Township, Columbia County, and Township Road #721 (Hackett Road) over Fishing Creek in Sugarloaf Township, Columbia County.	PENNDOT	Right of Way	3	Columbia		\$60,000	\$60,000	\$0
116203	Park Blvd to Luzerne Co	Microsurface on State Route 11 from Park Blvd to Luzern County, in Berwick Boro, Columbia County.	PENNDOT	Construction	3	Columbia	11	\$1,173,000	\$1,173,000	\$0
116356	Park St to Shaffer Rd (SR 1001)	Microsurface on State Route 11 from Park St. to Shaffer Rd. (SR 1001), in Scott Township and Town of Bloomsburg, Columbia County	PENNDOT	Construction	3	Columbia	11	\$920,000	\$946,000	\$26,000
120083	D3 SEDA-COG Bridge Lighting Upgrades to LED	Upgrade bridge lighting from non-LED (HPS) to LED on State Routes 42, 487, and 2028 over the North Branch of the Susquehanna River, in Montour, Catawissa, Mifflin, South Centre Townships and the Town of Bloomsburg, Columbia county, State Routes 11 and 642 over the West Branch of the Susquehanna River in point Township, Northumberland Borough, and Milton Borough, Northumberland county, and State Route 11 over Ramps A and B in Penn Township, Snyder County.	PENNDOT	Preliminary Engineering	3	Columbia	42	\$170,937	\$171,000	\$63
120083	D3 SEDA-COG Bridge Lighting Upgrades to LED	Upgrade bridge lighting from non-LED (HPS) to LED on State Routes 42, 487, and 2028 over the North Branch of the Susquehanna River, in Montour, Catawissa, Mifflin, South Centre Townships and the Town of Bloomsburg, Columbia county, State Routes 11 and 642 over the West Branch of the Susquehanna River in point Township, Northumberland Borough, and Milton Borough, Northumberland county, and State Route 11 over Ramps A and B in Penn Township, Snyder County.	PENNDOT	Final Design	3	Columbia	42	\$150,000	\$255,000	\$105,000
109377	SR 11 to SR 2028 (Hetlerville Rd) EB	Mill and Resurface on Interstate 80 East from State Route 11 to Hetlerville Rd (SR 2028) in South Centre and Mifflin Townships, Columbia County.	PENNDOT	Preliminary Engineering	3	Columbia	80	\$350,000	\$350,000	\$0
103011	SR 487 over Abandoned RR	Bridge Removal on State Route 487 over Abandoned Railroad, in Scott Township, Columbia County	PENNDOT	Final Design	3	Columbia	487	\$605,000	\$605,000	\$0
103011	SR 487 over Abandoned RR	Bridge Removal on State Route 487 over Abandoned Railroad, in Scott Township, Columbia County	PENNDOT	Right of Way	3	Columbia	487	\$45,000	\$45,000	\$0
82774	SR 1020 over Pine Creek	Bridge Superstructure Rehabilitation on Winding Road (SR 1020) over Pine Creek in Fishing Creek Township, Columbia County.	PENNDOT	Construction	3	Columbia	1020	\$1,742,000	\$1,975,000	\$233,000
117577	SR 2001 over Roaring Creek	Deck Replacement and Substructure Repairs on Mill Road (SR 2001) over Roaring Creek, in Roaring Creek Township Columbia County	PENNDOT	Preliminary Engineering	3	Columbia	2001	\$16,000	\$16,000	\$0
117576	SR 4020 over Green Creek	Bridge Rehabilitation work on Green Creek Road (SR 4020) over Green Creek in Orange Township, Columbia County	PENNDOT	Construction	3	Columbia	4020	\$1,250,000	\$1,250,000	\$0
6303	T-396 over E Branch Chillisquaue Ck Cnty Br#12	Local Bridge Replacement on Crawford Road (T-396) over East Branch of Chillisquaue Creek, in Derry Township, Montour County.	PENNDOT	Construction	3	Montour		\$779,532	\$800,000	\$20,468
103853	SR 54 Corridor Safety Improvement	Realignment, Signalization, congestion improvements, and other improvements of the State Route 54 and State Route 642 intersections, Bridge Replacement on State Route 642 over Mauses Creek, Bridge Rehabilitation on State Route 54 West over Mahoning Creek, and relocation of the park and ride, in Valley and Mahoning Townships, Montour County.	PENNDOT	Construction	3	Montour	54	\$11,476,831	\$13,884,631	\$2,407,800
107128	SR 54 under Market Street	Structure Improvements on State Route 54 under Market Street, in Danville Borough, Montour County	PENNDOT	Preliminary Engineering	3	Montour	54	\$328,000	\$328,000	\$0
121840	2nd St. and Front St.	Resurface 2nd Street in the City of Sunbury, Northumberland County.	PENNDOT	Construction	3	Northumberland		\$1,330,000	\$1,330,000	\$0
119490	Market St to Shamokin St	Streetscape amenities improvements with ADA upgrades and sidewalk repairs on Independence Street, in the City of Shamokin, Northumberland County	PENNDOT	Final Design	3	Northumberland		\$350,000	\$350,000	\$0
119490	Market St to Shamokin St	Streetscape amenities improvements with ADA upgrades and sidewalk repairs on Independence Street, in the City of Shamokin, Northumberland County	PENNDOT	Construction	3	Northumberland		\$1,793,000	\$1,793,000	\$0
103928	8th St over Shamokin Crk	Local bridge rehabilitation on 8th St over Shamokin Creek in the City of Shamokin, Northumberland County	PENNDOT	Preliminary Engineering	3	Northumberland		\$56,000	\$56,000	\$0
103928	8th St over Shamokin Crk	Local bridge rehabilitation on 8th St over Shamokin Creek in the City of Shamokin, Northumberland County	PENNDOT	Final Design	3	Northumberland		\$160,000	\$160,000	\$0
103928	8th St over Shamokin Crk	Local bridge rehabilitation on 8th St over Shamokin Creek in the City of Shamokin, Northumberland County	PENNDOT	Right of Way	3	Northumberland		\$32,000	\$32,000	\$0
88778	SR 54 over Unnamed Tributary to Shamokin Creek	Bridge replacement on State Route 54 (Market Street) over Unnamed Tributary to Shamokin Creek in Ralpho Township, Northumberland County.	PENNDOT	Construction	3	Northumberland	54	\$500,000	\$500,000	\$0
109577	I-80 over SR 254 & Limestone Run	Bridge Rehabilitation, Bridge Piers Rehabilitation, on four Bridges on Interstate 80 with two in Liberty Township Montour County and two in Turbot Township Northumberland County.	PENNDOT	Final Design	3	Northumberland	80	\$550,000	\$550,000	\$0
120602	I-180 & SR 147 HTCMB Northumberland County	Install high tension median cable barrier along SR 180/147 in Northumberland County.	PENNDOT	Construction	3	Northumberland	180	\$2,787,890	\$2,787,890	\$0

MPMS	PROJECT TITLE	PROJECT DESCRIPTION	PROJECT ADMINISTRATOR	PHASE	DISTRICT	COUNTY	STATE ROUTE	OBLIGATION* FFY 2025	PROG. TOTAL FFY 2025 TO 2028	FED FUNDS REMAINING
78935	SR 225 over Mahantango Creek	Bridge Rehabilitation on State Route 225 over Mahantango Creek, Lower Mahanoy Township, Northumberland County	PENNDOT	Final Design	3	Northumberland	225	\$80,000	\$100,000	\$20,000
115584	Church St to Shikellamy Ave	Mill and resurface on State Route 405 from Church St to Shikellamy Ave, and Bridge Preservation work on two bridges on State Route 405 over the North Branch of the Susquehanna River, in Sunbury City and Upper August Township, Northumberland County	PENNDOT	Preliminary Engineering	3	Northumberland	405	\$334	\$334	\$0
109833	SR 405 (CSV T Gap) from Eighth St to Acorn Drive	Resurface State Route 405 from Eighth Street to Acorn Drive, in West Chillisquaque Township, Northumberland Borough and Point Township, Northumberland County.	PENNDOT	Construction	3	Northumberland	405	\$3,135,884	\$3,250,529	\$114,645
122180	SR 405 Handrail and Sidewalk	Sidewalk and Handrail replacement on State Route 405, in Upper Augusta Township, Northumberland County.	PENNDOT	Construction	3	Northumberland	405	\$447,000	\$447,000	\$0
111352	SVRR RRX Northumberland County	Rail crossing upgrades to include Masts, Gates, and Lights at the crossings on South Fourth Street, South Awl Street, South 10th Street, Lenker Avenue, Haas Avenue, City of Subury, Mill Road, Upper August Township, Camp Road and Market Street Borough of Snydertown, State Route 487, Shamrock Road, Short Road, and Reading Turnpike, Shamokin Township, Overlook Boulevard and Mountain Road, Ralpho Township, John's Estate Road, Coal Township, Northumberland County.	PENNDOT	Construction	3	Northumberland	487	\$2,221,018	\$2,221,018	\$0
117608	SR 3018 over Mahantango Creek	Bridge Rehabilitation on Klingerstown Road (SR 3018) over Mahantango Creek, in Jordan Township, Northumberland County	PENNDOT	Final Design	3	Northumberland	3018	\$175,000	\$225,000	\$50,000
6615	SR 4020 over Little Shamokin Creek	Bridge Preservation on Hallowing Run Road (SR 4020) over Little Shamokin Creek, in Rockefeller Township, Northumberland County	PENNDOT	Preliminary Engineering	3	Northumberland	4020	\$37,000	\$37,000	\$0
99241	SR 11 from N. Main St to Penn's Creek	Microsurface Roadway on State Route 11 from N. Main St to Penn's Creek, in Franklin & Union Townships, Snyder County.	PENNDOT	Construction	3	Snyder	11	\$1,046,421	\$1,100,000	\$53,579
6899	SR 522 over Beaver Creek	Bridge replacement on State Route 522 over Beaver Creek, in Spring Township, Snyder County.	PENNDOT	Construction	3	Snyder	522	\$2,992,000	\$2,992,000	\$0
6902	SR 522 over Tb Beaver Crk	Bridge Replacement on State Route 522 and State Route 235 over Tributary to Beaver Creek, in Spring Township, Snyder County.	PENNDOT	Construction	3	Snyder	522	\$5,250,500	\$5,251,000	\$500
6907	SR 522 over Kern Run	Bridge Replacement on State Route 522 over Tributary to Middle Creek, in Beavertown Borough, Snyder County.	PENNDOT	Preliminary Engineering	3	Snyder	522	\$85,254	\$85,254	\$0
6909	SR 522 ov Luphers Run	Bridge Replacement on State Route 522 over Tributary to Middle Creek, in Beavertown Borough, Snyder County	PENNDOT	Preliminary Engineering	3	Snyder	522	\$65,000	\$85,000	\$20,000
114320	SR 3006 ov Mahanoy Cr & SR 1007 ov Middle Cr	Bridge Preservation Bridge Painting on Globe Mills Rd., (SR 1007) over Middle Creek in Middle Creek Twp., Snyder County, and Herndon Bypass Rd., (SR 3006) over Mahanoy Creek in Jackson Twp., Northumberland County.	PENNDOT	Preliminary Engineering	3	Snyder	1007	\$70,000	\$70,000	\$0
117579	SR 4016 over N Branch Middle Creek	Deck Replacement and Substructure Repairs on Middle Road (SR 4016) over North Branch Middle Creek, in Adams Township Snyder County	PENNDOT	Construction	3	Snyder	4016	\$1,235,000	\$1,450,000	\$215,000
121858	SR 11 near County Line Rd	High Friction Surface Treatment, Milling, and Resurfacing on State Route 11 near County Line Rd in Union Township, Union County.	PENNDOT	Construction	3	Union	11	\$141,000	\$141,000	\$0
97633	US 15 over Winfield Creek	Bridge Rehabilitation on State Route 15 over Winfield Creek, Union Township, Union County	PENNDOT	Preliminary Engineering	3	Union	15	\$150,000	\$550,000	\$400,000
105516	Mile Run to Clinton County	Mill and Resurface Roadway Interstate 80 West from the Union County line to Mile Run in Lewis and West Buffalo Townships, Union County	PENNDOT	Preliminary Engineering	3	Union	80	\$240,000	\$240,000	\$0
78979	SR 1011 over White Deer Creek	Bridge rehabilitation on Old Route 15 (SR 1011) over White Deer Creek in White Deer Township, Union County.	PENNDOT	Preliminary Engineering	3	Union	1011	\$35	\$35	\$0
93356	Big Fishing Creek Br #3	Bridge Replacement on State Route 64 over Big Fishing Creek in Porter Township, Clinton County.	PENNDOT	Preliminary Engineering	2	Clinton	64	\$(2,534)	\$0	\$0
118288	I-80 High Friction Surface	High Friction Surface Safety Improvement on State Route 80 West bound in Lamar Township, Clinton County.	PENNDOT	Preliminary Engineering	2	Clinton	80	\$(80,719)	\$0	\$0
114972	SR 120 Slide Restoration II	Slope Failure/Highway Restoration on SR 120 in East Keating/Noyes Township, Clinton County.	PENNDOT	Construction	2	Clinton	120	\$(121,877)	\$0	\$0
117465	Paul Mack Blvd Highway Lighting	Highway lighting improvements on State Route 120 and State Route 2012, Paul Mack Boulevard, in Lock Haven City and Castanea Township, Clinton County.	PENNDOT	Preliminary Engineering	2	Clinton	120	\$(230,088)	\$0	\$0
117465	Paul Mack Blvd Highway Lighting	Highway lighting improvements on State Route 120 and State Route 2012, Paul Mack Boulevard, in Lock Haven City and Castanea Township, Clinton County.	PENNDOT	Construction	2	Clinton	120	\$(264,076)	\$0	\$0
110354	2021 Bridge Preservation	Bridge Improvements at 2 Locations: State Route 120 over Norfolk Southern Railroad in Renovo Borough and State Route 1002 over Susquehanna River in Dunnstable Township, Clinton County.	PENNDOT	Preliminary Engineering	2	Clinton	120	\$(22,961)	\$0	\$0
110354	2021 Bridge Preservation	Bridge Improvements at 2 Locations: State Route 120 over Norfolk Southern Railroad in Renovo Borough and State Route 1002 over Susquehanna River in Dunnstable Township, Clinton County.	PENNDOT	Construction	2	Clinton	120	\$(69,785)	\$0	\$0
110355	2022 Bridge Preservation	Bridge Improvements on State Route 150 over Bald Eagle Creek in Bald Eagle Township, State Route 150 over Chatham Run in Dunstable Township, and State Route 220 over Fishing Creek in Lamar Township all in Clinton County.	PENNDOT	Right of Way	2	Clinton	150	\$(41,030)	\$0	\$0

MPMS	PROJECT TITLE	PROJECT DESCRIPTION	PROJECT ADMINISTRATOR	PHASE	DISTRICT	COUNTY	STATE ROUTE	OBLIGATION* FFY 2025	PROG. TOTAL FFY 2025 TO 2028	FED FUNDS REMAINING
109872	SR 150 Lock Haven Signals	Signal Improvements at 9 signalized locations on State Route 150, 1 signalized location on State Route 120, in the City of Lock Haven, Clinton County. Pedestrian upgrades at 1 unsignalized location on State Route 150 in the City of Lock Haven, Clinton County.	PENNDOT	Preliminary Engineering	2	Clinton	150	\$(199,642)	\$0	\$0
3784	PA 477 Fishing Ck Br.	Bridge Replacement on State Route 477 over Fishing Creek in Loganton Borough, Clinton County.	PENNDOT	Preliminary Engineering	2	Clinton	477	\$(558)	\$0	\$0
85149	SR 0880 Rauchtown Cr II	Bridge improvements on State Route 880 over Rauchtown Creek in Crawford Township, Clinton County.	PENNDOT	Final Design	2	Clinton	880	\$(150,459)	\$0	\$0
85149	SR 0880 Rauchtown Cr II	Bridge improvements on State Route 880 over Rauchtown Creek in Crawford Township, Clinton County.	PENNDOT	Right of Way	2	Clinton	880	\$(12,276)	\$0	\$0
105566	SR 35 Stop 35 to Sheetz Area	Highway Restoration, improvements to existing signal/adding traffic signal and also drainage upgrades on State Route 35 in Fermanagh Township, Juniata County.	PENNDOT	Construction	2	Juniata	35	\$(400,000)	\$0	\$0
85276	Br Long Hollow II	Bridge Replacement on US Route 22 (William Penn Highway) over unnamed tributary to Long Hollow Run approximately 3 3/4 miles north of the Huntingdon County Line in Wayne Township, Mifflin County.	PENNDOT	Final Design	2	Mifflin	22	\$(193,730)	\$0	\$0
85276	Br Long Hollow II	Bridge Replacement on US Route 22 (William Penn Highway) over unnamed tributary to Long Hollow Run approximately 3 3/4 miles north of the Huntingdon County Line in Wayne Township, Mifflin County.	PENNDOT	Construction	2	Mifflin	22	\$(85,750)	\$0	\$0
69387	Long Hollow Run Bridge	Bridge improvement on US Route 22 over Long Hollow Run Bridge in Wayne Township, Mifflin County.	PENNDOT	Preliminary Engineering	2	Mifflin	22	\$(153,442)	\$490	\$0
93316	Valley St. Betterment	Highway Reconstruction and Resurfacing on State Route 1005 in Lewistown Borough, Mifflin County.	PENNDOT	Construction	2	Mifflin	1005	\$(655,196)	\$0	\$0
117585	SR 3002 E. Charles St. to Bus. 22 (ST72)	Highway Resurfacing on State Route 3002 from East Charles Street to Business Route 22, including ramps in Lewistown Borough, Mifflin County.	PENNDOT	Preliminary Engineering	2	Mifflin	3002	\$(86,689)	\$0	\$0
118769	SR 11 North and South over Fishing Creek	Bridge Preservation work on State Route 11 North and South over Fishing Creek, in Montour Township and Bloomsburg, Columbia County	PENNDOT	Final Design	3	Columbia	11	\$(51,313)	\$0	\$0
118769	SR 11 North and South over Fishing Creek	Bridge Preservation work on State Route 11 North and South over Fishing Creek, in Montour Township and Bloomsburg, Columbia County	PENNDOT	Construction	3	Columbia	11	\$(21,045)	\$0	\$0
117568	SR 42 & 93 over North Branch Susquehanna River	Epoxy Overlay State Routes 42 and 93 and replace and upgrade lighting on State Route 93 over the North Branch of the Susquehanna River, in Montour Township & Berwick Borough Columbia County	PENNDOT	Preliminary Engineering	3	Columbia	42	\$(19,077)	\$0	\$0
117567	SR 93 over North Branch of Susquehanna River	Bridge Painting on State Route 93 over the North Branch of the Susquehanna River in Berwick Borough Columbia County.	PENNDOT	Preliminary Engineering	3	Columbia	93	\$(66,177)	\$0	\$0
117567	SR 93 over North Branch of Susquehanna River	Bridge Painting on State Route 93 over the North Branch of the Susquehanna River in Berwick Borough Columbia County.	PENNDOT	Construction	3	Columbia	93	\$(396,195)	\$0	\$0
88051	SR 1020 over Fishing Creek	Bridge Rehabilitation on Winding Road (SR 1020) over Fishing Creek in Fishing Creek Township, Columbia County	PENNDOT	Preliminary Engineering	3	Columbia	1020	\$(119)	\$0	\$0
105527	I-80 West from Klondike Rd to Mauses Cr Trib	Reconstruction and Bridge Preservation on Interstate 80 West from Klondike Road to Tributary to Mauses Creek in Liberty and Valley Townships, Montour County	PENNDOT	Preliminary Engineering	3	Montour	80	\$(229,529)	\$0	\$0
98610	Cherry St to Byrd Ave	Resurface Roadway on Bloom Rd (SR 2008) from Cherry Street to Byrd Ave, in Danville Borough and Mahoning Township, Montour County	PENNDOT	Construction	3	Montour	2008	\$(121,817)	\$0	\$0
93642	T-802 over S Branch of Roaring Creek Cnty #50	Local bridge replacement on Happy Valley Road (T-802) over South Branch of Roaring Creek in Ralpho Township, Northumberland County.	PENNDOT	Final Design	3	Northumberland		\$(155,682)	\$0	\$0
93642	T-802 over S Branch of Roaring Creek Cnty #50	Local bridge replacement on Happy Valley Road (T-802) over South Branch of Roaring Creek in Ralpho Township, Northumberland County.	PENNDOT	Construction	3	Northumberland		\$(67,864)	\$0	\$0
87909	SR 54 from Montour County to Boyd Station	Resurface State Route 54 from Montour County Line to Boyd Station in Rush Township and Riverside Borough, Northumberland County.	PENNDOT	Construction	3	Northumberland	54	\$(72,288)	\$0	\$0
99327	16th St to 4th St	Roadway reconstruction on State Route 61 from Fifth Street to Dark Run in Kulpmont Borough and Coal Township, Northumberland County.	PENNDOT	Study	3	Northumberland	61	\$(1)	\$0	\$0
115583	Shamokin Cr to SR 11	Mill and resurface on State Route 147 from Shamokin Creek to Church St, base repairs from Church St. to State Route 11, and Bridge preservation on State Route 147 over Shamokin Creek, in City of Sunbury and Upper Augusta Township, Northumberland County	PENNDOT	Construction	3	Northumberland	147	\$(472,319)	\$0	\$0
117566	SR 225 over Mahanoy Creek	Bridge Painting on State Route 225 over Mahanoy Creek in, Little Mahanoy Township Northumberland County.	PENNDOT	Preliminary Engineering	3	Northumberland	225	\$(9,490)	\$0	\$0
85623	SR 405 over Tributary to Susquehanna River	Bridge rehabilitaion on State Route 405 over Tributary to Susquehanna River in Point Township, Northumberland County.	PENNDOT	Construction	3	Northumberland	405	\$(74,162)	\$0	\$0
97679	W Br Susq Rvr to Milton	Mill and resurfacing State Route 642 from the West Branch of the Susquehanna River to Milton, and bridge preservation on two bridges on State Route 642 over the West Branch of the Susquehanna River, in Turbot Township and Milton Borough, Northumberland County.	PENNDOT	Construction	3	Northumberland	642	\$(171,982)	\$0	\$0
114101	Bridge Painting Off System Bridges SEDA-COG	Bridge Preservation - Bridge Painting on Eight Bridges in Various Municipalities in Columbia, Montour, and Northumberland Counties.	PENNDOT	Construction	3	Northumberland	2003	\$(4,306)	\$0	\$0

MPMS	PROJECT TITLE	PROJECT DESCRIPTION	PROJECT ADMINISTRATOR	PHASE	DISTRICT	COUNTY	STATE ROUTE	OBLIGATION* FFY 2025	PROG. TOTAL FFY 2025 TO 2028	FED FUNDS REMAINING
115656	Epoxy Overlay BOF SEDA-COG Contract #1	Bridge Preservation Epoxy Overlay on Camp Lavigne Rd (SR 4049) over Fishing Creek, Central Rd (SR 4049) over the West Branch of Fishing Creek, Sugarloaf Twp., Columbia County, Narehood Rd (SR 3003) over Chillisquaque Creek, Liberty Twp., Montour County, Hospital Rd (SR 2015) over Shamokin Creek & SEDA-COG Railroad, Coal Twp., Herndon Bypass (SR 3006) over Mahony Creek Jackson Twp., Northumberland County, and two bridges on Devitt Camp Rd (SR 1012) both over White Deer Hole Creek, Gregg Twp., Union County.	PENNDOT	Construction	3	Northumberland	2015	\$(160,855)	\$0	\$0
98540	SR 4004 over Tributary N Branch Susquehanna River	Bridge Replacement on Mile Post Road (SR 4004) over Tributary to North Branch of Susquehanna River in Upper Augusta Township, Northumberland County.	PENNDOT	Construction	3	Northumberland	4004	\$(552,656)	\$0	\$0
6886	US 522 over Tributary to Middle Creek	Bridge replacement on State Route 522 over Tributary to Middle Creek, in Spring Township, Snyder County.	PENNDOT	Final Design	3	Snyder	522	\$(29,114)	\$0	\$0
6886	US 522 over Tributary to Middle Creek	Bridge replacement on State Route 522 over Tributary to Middle Creek, in Spring Township, Snyder County.	PENNDOT	Utility	3	Snyder	522	\$(195,000)	\$0	\$0
104616	SR 522 from Willow Ave to Swinehart Dr	Mill and resurface State Route 522 from Willow Avenue to Swinehart Drive, in Middleburg Borough and Franklin Township, Snyder County.	PENNDOT	Construction	3	Snyder	522	\$(68,045)	\$0	\$0
110599	Ikeler St. to T-387 Hafer Rd.	Resurface Roadway on State Route 15 from Ikeler St. to Hafer Rd. (T-387) Hafer Rd., in Kelly Township and the Lewisburg Boro., Union County.	PENNDOT	Construction	3	Union	15	\$(191,414)	\$0	\$0
117901	West Shore RRX, SR 1011 and River Rd.	Rail crossing upgrades for motion detection, signals, and crossing surface for two West Shore Railroad, Operated by Union County Industrial Railroad, crossings on Old Route 15 Rd. (SR 1011) and River Rd., in White Deer Township, Union County.	PENNDOT	Construction	3	Union	1011	\$(500,828)	\$0	\$0

* Negative amounts in the obligation column are a result of de-obligating unused funds for a proiect. De-obligation is a release of funds due to either the cancelation or completion of a proiect.

FFY 2025 Interstate TIP
FHWA Obligation Report
Obligations 10/1/2024 to 9/30/2025

MPMS	PROJECT TITLE	PROJECT DESCRIPTION	PROJECT ADMINISTRATOR	PHASE	DISTRICT	COUNTY	STATE ROUTE	OBLIGATION* FFY 2025	PROG. TOTAL FFY 2025 TO 2028	FED FUNDS REMAINING
122162	Exit 185 Ramps	Highway Restoration on Interstate 80 Exit 185 Ramps, SR 8008, Loganton, in Greene Township, Clinton County.	PENNDOT	Construction	2	Clinton	8008	\$712,600	\$805,000	\$92,400
97561	I-80 from Creek Road to SR 487	Reconstruction of Interstate 80, with bridge preservation work, from Creek Road to State Route 487, and a bridge replacements over a tributary to fishing creek and a bridge replacement over Township Road T-188 in Hemlock, Mt Pleasant, Scott, South Centre Townships, and the Town of Bloomsburg, Columbia County. Repairing and upgrading embankments to increase flood resilience of the state highway network.	PENNDOT	Preliminary Engineering	3	Columbia	80	\$400,000	\$400,000	\$0
97561	I-80 from Creek Road to SR 487	Reconstruction of Interstate 80, with bridge preservation work, from Creek Road to State Route 487, and a bridge replacements over a tributary to fishing creek and a bridge replacement over Township Road T-188 in Hemlock, Mt Pleasant, Scott, South Centre Townships, and the Town of Bloomsburg, Columbia County. Repairing and upgrading embankments to increase flood resilience of the state highway network.	PENNDOT	Final Design	3	Columbia	80	\$200,000	\$200,000	\$0
119747	I-80 Fishing Creek embankment stabilization	Embankment stabilization work to increase flood resilience of I-80 along Fishing Creek in Mt Pleasant & Scott Twps, Columbia County.	PENNDOT	Construction	3	Columbia	80	\$347,431	\$347,431	\$0
120616	Recessed Tape Installation	Recessed pavement marking on I-80 in Columbia Co	PENNDOT	Construction	3	Columbia	80	\$148,491	\$148,491	\$0
120098	Recessed Pavement Marking	Recessed pavement marking on I-80 from Northumberland Co to Columbia Co (EB & WB) in Montour Co	PENNDOT	Construction	3	Montour	80	\$160,950	\$160,950	\$0
120097	Recessed Pavement Marking Tape	Recessed pavement marking on I-80 from Union Co to Montour Co (EB & WB) in Northumberland Co	PENNDOT	Construction	3	Northumberland	80	\$132,815	\$132,815	\$0
120048	Recessed Pavement Marking Tape	Install recessed pavement marking tape on Interstate 180 in Delaware and Turbot Townships, Northumberland County	PENNDOT	Construction	3	Northumberland	180	\$90,336	\$90,336	\$0
115766	I-80 from Reichart Rd to SR 11	Mill, resurface, and centerline patch, with bridge preservation, and slope failure preventive maintenance - install sheet piling for the first phase of flood resiliency work planned for this section of I-80 - on I 80 & along Fishing Creek from Reichart Rd to SR 11, in Hemlock, Mt Pleasant, Scott, South Centre Twps, and Bloomsburg, Columbia County.	PENNDOT	Preliminary Engineering	3	Columbia	80	\$(1,264,831)	\$0	\$0
115766	I-80 from Reichart Rd to SR 11	Mill, resurface, and centerline patch, with bridge preservation, and slope failure preventive maintenance - install sheet piling for the first phase of flood resiliency work planned for this section of I-80 - on I 80 & along Fishing Creek from Reichart Rd to SR 11, in Hemlock, Mt Pleasant, Scott, South Centre Twps, and Bloomsburg, Columbia County.	PENNDOT	Construction	3	Columbia	80	\$(615,847)	\$0	\$0

* Negative amounts in the obligation column are a result of de-obligating unused funds for a proiect. De-obligation is a release of funds due to either the cancelation or completion of a proiect.

Transit Grants

Below are the 2024-2025 federally funded transit grants awarded to transit agencies operating in the SEDA-COG MPO region. Other transit agencies operating in the SEDA-COG MPO area had no federal grant activity during 2024-2025 (Lower Anthracite Transportation System), or their agreements are run through other Planning Partners (rabbittransit).

Project	MPMS	Federal Grant #	Sub-recipient	Project Administrator	County	Federal Fund Category	Obligated Federal Funds (FFY 2025)	Federal Funds Remaining
Revenue Rolling Stock (30 Foot Buses): Acquiring 8 buses to provide shared ride service	102220	PA-2025-011	Call-A-Ride Service	PennDOT	Mifflin, Juniata	5310	\$704,000	\$704,000
Revenue Rolling Stock (30 Foot Buses): Acquiring 13 vans to provide service to clients	102220	PA-2025-051	STEP, Inc.	PennDOT	Lycoming, Clinton	5310	\$995,140	\$995,140