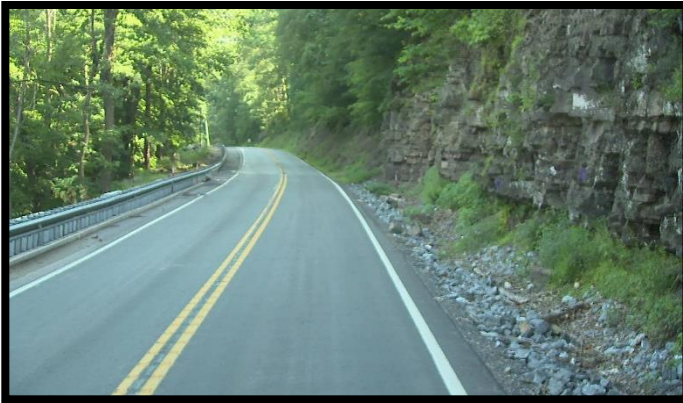


SEDA-COG Metropolitan Planning Organization Annual Listing of Obligated Projects Federal Fiscal Year 2022



Top left photo: MPMS 114972 location
Top right photo: MPMS 117901 location
Bottom right photo: MPMS 4616 location
Bottom left photo: MPMS 91608 location



Prepared by: SEDA-Council of Governments
December 2022

www.seda-cog.org

SEDA-COG Metropolitan Planning Organization (MPO)
Annual Listing of Federally Obligated Projects
FFY 2022 (October 1, 2021 – September 30, 2022)

SEDA-COG MPO

The SEDA-COG MPO is the official organization through which federal transportation funds are distributed, planned, programmed, and implemented in Clinton, Columbia, Juniata, Mifflin, Montour, Northumberland, Snyder, and Union counties. The SEDA-COG MPO operates via an agreement with PennDOT to approve studies and capital improvements for highways, bridges, transit, railroads, bicycle/pedestrian facilities and other transportation concerns. Four primary documents are developed and approved by the MPO: the region's Long Range Transportation Plan (LRTP), Transportation Improvement Program (TIP), Public Participation Plan (PPP) and Unified Planning Work Program (UPWP). In executing its work, the MPO strives to provide a balanced transportation system for the maximum benefit of people, businesses, and communities.

Purpose of this Report

The current federal transportation law, the Infrastructure Investment and Jobs Act (IIJA), also known as the "Bipartisan Infrastructure Law," requires MPOs to publish an Annual List of Obligated Projects, reporting on the federal funding obligations for projects during the federal fiscal year from October 1 to September 30. The federal regulation states, in plain language, that:

"An annual listing of projects, including investments in pedestrian walkways and bicycle transportation facilities, for which federal funds have been obligated in the preceding program year shall be published or otherwise made available through the cooperative effort of the state, public transportation operator(s), and metropolitan planning organization. The listing shall be consistent with the categories identified in the TIP."

The Federal Highway Administration defines obligation as the "federal government's legal commitment (promise) to pay or reimburse states or other entities for the federal share of a project's eligible costs." Thus, an obligated project is one that has been approved by the federal government for reimbursement, though not necessarily reimbursed yet. This reimbursement can be for projects that have been initiated in previous years or will not be completed until future years, and the final cost of a project may be different from the amount obligated. Funding can also be "de-obligated" from projects in response to lower-than-expected costs, project cancellation, or other factors, and these released resources are often redirected to other projects.

This report responds to the directive set forth in federal statute. It lists all federally funded transportation projects in the SEDA-COG MPO region that were obligated during Federal Fiscal Year 2022 (October 1, 2021 to September 30, 2022).

During FFY 2022, the SEDA-COG MPO saw a total of 75 obligations worth \$146,926,599.

Project Locations:

The below map shows the locations of mappable projects that were obligated during FFY 2022.

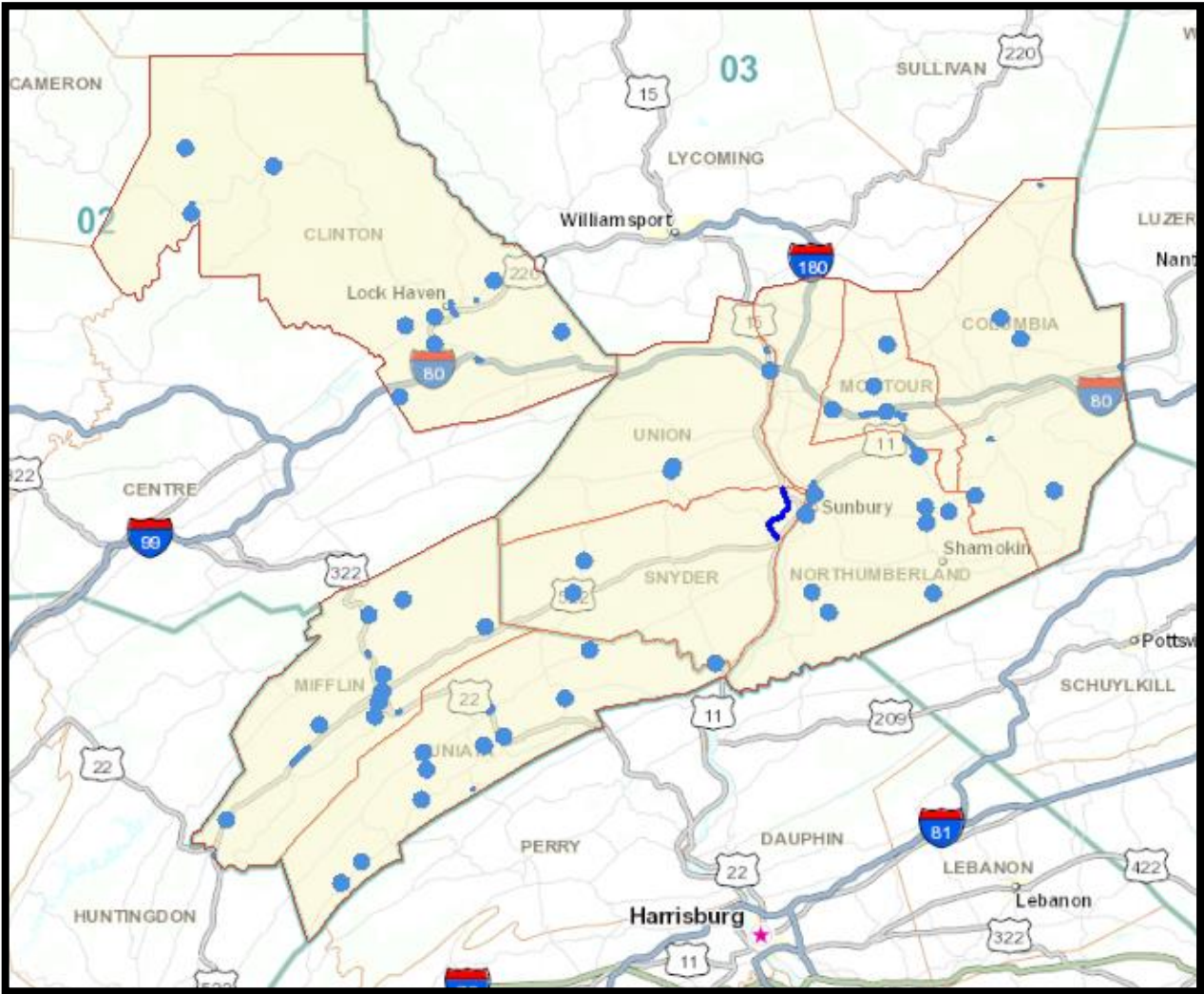


Table Definitions:

County is the county in which the project is located.

Fed. Funds Remaining is the amount of federal funding remaining and available for subsequent years.

MPMS stands for Multi-modal Project Management System number. It is an inventory of Highway/Bridge and Rail/Freight projects that contains information about project phase milestones, funding, and status. Additional project information can be found at PennDOT's [One Map](#) interactive online map and searching by the MPMS # as the Asset ID. This interactive map also provides project search by region, route, address or intersection options and gives project details such as let date, estimated completion date, etc.

Obligated is the amount of obligated federal funds for the FFY of this report.

Phase is the Project Phase: PE (Preliminary Engineering); FD (Final Design); UTL (Utilities); ROW (Right of Way); CON (Construction); Study.

Prog. Total is the amount of federal funds programmed for the project.

Abbreviations Used in Project Titles and Descriptions:

Br – Bridge

Cr or Crk – Creek

DB – Design/Build

DF – Department Force

EB – East Bound

HSIP – Highway Safety Improvement Program

I – Interstate Route Number

NS – Norfolk Southern Railroad

NSHR – North Shore Railroad

RR – Railroad

RRX – Railroad Crossing

SR – State Route

T – Township Route Number

TASA or TAP – Transportation Alternatives Set-Aside Program

**FFY 2021 SEDA-COG TIP
FHWA Obligation Report
Obligations 10/1/21 to 9/30/22**

MPMS	PROJECT TITLE	PROJECT DESCRIPTION	PROJECT ADMINISTRATOR	PHASE	DISTRICT	COUNTY	STATE ROUTE	OBLIGATION* FFY 2022	PROG. TOTAL FFY 2021 TO 2024	FED FUNDS REMAINING
118400	Bald Eagle Valley Trail Phase 5, TASA	Improved Walkway/Trail from Spook Hollow Railroad Bridge to Fritz Lane, Bald Eagle Valley Trail, in Wayne and Pine Townships, Clinton County.	PENNDOT	Preliminary Engineering	2	Clinton		\$20,000	\$20,000	\$0
93356	Big Fishing Creek Br #3	Bridge Replacement on State Route 64 over Big Fishing Creek in Porter Township, Clinton County.	PENNDOT	Construction	2	Clinton	64	\$2,112,950	\$2,112,950	\$0
118288	I-80 High Friction Surface	High Friction Surface Safety Improvement on State Route 80 West bound in Lamar Township, Clinton County.	PENNDOT	Preliminary Engineering	2	Clinton	80	\$100,000	\$100,000	\$0
114972	SR 120 Slide Restoration II	Slope Failure/Highway Restoration on SR 120 in East Keating/Noyes Township, Clinton County.	PENNDOT	Construction	2	Clinton	120	\$1,651,406	\$1,993,000	\$341,594
117465	Paul Mack Blvd Highway Lighting	Highway lighting improvements on State Route 120 and State Route 2012, Paul Mack Boulevard, in Lock Haven City and Castanea Township, Clinton County.	PENNDOT	Preliminary Engineering	2	Clinton	120	\$500,000	\$500,000	\$0
117465	Paul Mack Blvd Highway Lighting	Highway lighting improvements on State Route 120 and State Route 2012, Paul Mack Boulevard, in Lock Haven City and Castanea Township, Clinton County.	PENNDOT	Construction	2	Clinton	120	\$2,000,592	\$2,000,592	\$0
110354	2021 Bridge Preservation	Bridge Improvements at 2 Locations: State Route 120 over Norfolk Southern Railroad in Renovo Borough and State Route 1002 over Susquehanna River in Dunnstable Township, Clinton County.	PENNDOT	Preliminary Engineering	2	Clinton	120	\$57,661	\$121,000	\$63,339
110354	2021 Bridge Preservation	Bridge Improvements at 2 Locations: State Route 120 over Norfolk Southern Railroad in Renovo Borough and State Route 1002 over Susquehanna River in Dunnstable Township, Clinton County.	PENNDOT	Construction	2	Clinton	120	\$685,168	\$3,797,091	\$3,111,923
110355	2022 Bridge Preservation	Bridge Improvements on State Route 150 over Bald Eagle Creek in Bald Eagle Township, State Route 150 over Chatham Run in Dunstable Township, and State Route 220 over Fishing Creek in Lamar Township all in Clinton County.	PENNDOT	Preliminary Engineering	2	Clinton	150	\$68,000	\$353,550	\$285,550
110355	2022 Bridge Preservation	Bridge Improvements on State Route 150 over Bald Eagle Creek in Bald Eagle Township, State Route 150 over Chatham Run in Dunstable Township, and State Route 220 over Fishing Creek in Lamar Township all in Clinton County.	PENNDOT	Utility	2	Clinton	150	\$103,397	\$103,397	\$0
110355	2022 Bridge Preservation	Bridge Improvements on State Route 150 over Bald Eagle Creek in Bald Eagle Township, State Route 150 over Chatham Run in Dunstable Township, and State Route 220 over Fishing Creek in Lamar Township all in Clinton County.	PENNDOT	Right of Way	2	Clinton	150	\$103,397	\$103,397	\$0
110355	2022 Bridge Preservation	Bridge Improvements on State Route 150 over Bald Eagle Creek in Bald Eagle Township, State Route 150 over Chatham Run in Dunstable Township, and State Route 220 over Fishing Creek in Lamar Township all in Clinton County.	PENNDOT	Construction	2	Clinton	150	\$1,600,959	\$3,214,619	\$1,613,660
85149	SR 0880 Rauchtown Cr II	Bridge improvements on State Route 880 over Rauchtown Creek in Crawford Township, Clinton County.	PENNDOT	Final Design	2	Clinton	880	\$56,000	\$371,142	\$315,142
3850	SR 1001 Improvements	Safety Improvement, resurfacing, and retaining wall with pedestrian facilities, on State Route 1001 (Farrandville Road) from Lockport Heights/Jay Street Bridge to Township Road 359, West River Drive in Woodward Township, Village of Lockport in Clinton County.	PENNDOT	Construction	2	Clinton	1001	\$3,195,323	\$4,315,115	\$1,119,792
111458	Clinton County Rail Trail	Clinton County Rail to Trail project is to convert an abandoned railroad bridge over the Susquehanna River, to a rail/trail and construct associated connecting ramps is adjacent to Spook Hollow Road in Wayne and Pine Creek Townships, Clinton County.	PENNDOT	Construction	2	Clinton	2012	\$160,000	\$160,000	\$0
69038	Bridge over Laurel Run	Bridge Replacement on State Route 2019 over Laurel Run in Bald Eagle Township, Clinton County.	PENNDOT	Final Design	2	Clinton	2019	\$347,782	\$695,564	\$347,782
69038	Bridge over Laurel Run	Bridge Replacement on State Route 2019 over Laurel Run in Bald Eagle Township, Clinton County.	PENNDOT	Utility	2	Clinton	2019	\$49,209	\$135,975	\$86,766
69038	Bridge over Laurel Run	Bridge Replacement on State Route 2019 over Laurel Run in Bald Eagle Township, Clinton County.	PENNDOT	Right of Way	2	Clinton	2019	\$50,000	\$136,946	\$86,946
111074	River Road RR Warning Device	Installation of RR Warning Devices on Township Road 370, River Road over a Norfolk Southern Double Track Crossing in Milford Township, Juniata County.	PENNDOT	Construction	2	Juniata		\$351,500	\$601,500	\$250,000
105566	SR 35 Stop 35 to Sheetz Area	Highway Restoration, improvements to existing signal/adding traffic signal and also drainage upgrades on State Route 35 in Fermanagh Township, Juniata County.	PENNDOT	Preliminary Engineering	2	Juniata	35	\$50,000	\$50,000	\$0
116629	2022 SEDACOG Bridge Epoxy Surface Treatment	Bridge Preservation Bridge Epoxy Surface Treatments at various locations.	PENNDOT	Construction	2	Juniata	35	\$132,000	\$132,000	\$0
118284	SR 74 High Friction Surface	High Friction Surface Safety Improvement on State Route 74 in Turbett Township, Juniata County.	PENNDOT	Preliminary Engineering	2	Juniata	74	\$100,000	\$100,000	\$0
4190	Bridge over NS Railroad	Bridge Superstructure Replacement on State Route 75 over Norfolk Southern Railroad in Port Royal Borough, Juniata County.	PENNDOT	Final Design	2	Juniata	75	\$50,000	\$405,861	\$355,861
4190	Bridge over NS Railroad	Bridge Superstructure Replacement on State Route 75 over Norfolk Southern Railroad in Port Royal Borough, Juniata County.	PENNDOT	Construction	2	Juniata	75	\$4,000,559	\$4,000,559	\$0
114302	2024 SEDA-COG Bridge Preservation	Bridge Improvements on State Route 4001 over Kettle Creek in Leidy Township, Clinton County, State Route 2006 over Delaware Creek in Delaware Township, Juniata County and State Route 2003 over Doe Run in Walker Township, Juniata County.	PENNDOT	Preliminary Engineering	2	Juniata	2006	\$630,000	\$630,000	\$0
85206	SR 3023 over Tuscarora Cr	Bridge Replacement on State Route 3023 over Tuscarora Creek in Lack Township, Juniata County.	PENNDOT	Utility	2	Juniata	3023	\$20,000	\$20,000	\$0
85206	SR 3023 over Tuscarora Cr	Bridge Replacement on State Route 3023 over Tuscarora Creek in Lack Township, Juniata County.	PENNDOT	Right of Way	2	Juniata	3023	\$51,500	\$51,500	\$0
85206	SR 3023 over Tuscarora Cr	Bridge Replacement on State Route 3023 over Tuscarora Creek in Lack Township, Juniata County.	PENNDOT	Construction	2	Juniata	3023	\$909,494	\$2,724,936	\$1,815,442
114943	Expansion of Commerce Drive	New Access Road on Commerce Drive Expansion, T-862 through Business Center to old US 322, in Armagh Township, Milroy, Mifflin County	PENNDOT	Construction	2	Mifflin		\$696,395	\$714,947	\$18,552
93314	McVeytown Strodes Mills	Highway Resurfacing on US Route 22 from McVeytown to Strodes Mills, Mifflin County.	PENNDOT	Construction	2	Mifflin	22	\$1,473,304	\$3,059,854	\$1,586,550

MPMS	PROJECT TITLE	PROJECT DESCRIPTION	PROJECT ADMINISTRATOR	PHASE	DISTRICT	COUNTY	STATE ROUTE	OBLIGATION* FFY 2022	PROG. TOTAL FFY 2021 TO 2024	FED FUNDS REMAINING
85276	Br Long Hollow II	Bridge Replacement on US Route 22 (William Penn Highway) over unnamed tributary to Long Hollow Run approximately 3 3/4 miles north of the Huntingdon County Line in Wayne Township, Mifflin County.	PENNDOT	Construction	2	Mifflin	22	\$1,201,952	\$1,479,846	\$277,894
118109	SR 22 EB Solar Powered Chevrons	Solar Powered Sequential Lighted Chevrons Safety Improvement on State Route 22 Eastbound in Derry Township, Mifflin County.	PENNDOT	Preliminary Engineering	2	Mifflin	22	\$50,000	\$50,000	\$0
106321	2020 SEDACOG Bridge Preservation	Bridge Preservation on 4 Bridge Structures in Mifflin and Juniata Counties: 1. SR 103 over Tributary Juniata River in Granville Township, Mifflin County 2. SR 75 over Tributary Tuscarora Creek in Spruce Hill, Juniata County 3. SR 3017 over Tributary Tuscarora Creek in Beale Township, Juniata County 4. SR 3018 over Tuscarora Creek in Tuscarora Township, Juniata County	PENNDOT	Construction	2	Mifflin	103	\$50,000	\$50,000	\$0
93316	Valley St. Betterment	Highway Reconstruction and Resurfacing on State Route 1005 in Lewistown Borough, Mifflin County.	PENNDOT	Utility	2	Mifflin	1005	\$1,100,000	\$1,206,090	\$106,090
93316	Valley St. Betterment	Highway Reconstruction and Resurfacing on State Route 1005 in Lewistown Borough, Mifflin County.	PENNDOT	Construction	2	Mifflin	1005	\$5,987,714	\$5,987,714	\$0
91608	SR 1012 Laurel Run Br	Bridge improvement on State Route 1012 over Laurel Run in Armagh Township, near Milroy, Mifflin County.	PENNDOT	Final Design	2	Mifflin	1012	\$348,270	\$348,270	\$0
91608	SR 1012 Laurel Run Br	Bridge improvement on State Route 1012 over Laurel Run in Armagh Township, near Milroy, Mifflin County.	PENNDOT	Utility	2	Mifflin	1012	\$47,129	\$47,129	\$0
91608	SR 1012 Laurel Run Br	Bridge improvement on State Route 1012 over Laurel Run in Armagh Township, near Milroy, Mifflin County.	PENNDOT	Right of Way	2	Mifflin	1012	\$47,129	\$47,129	\$0
113151	SR 2008 over Br Jacks Creek	Bridge Improvement on State Route 2008 over Branch Jacks Creek in Decatur Township, Mifflin County.	PENNDOT	Preliminary Engineering	2	Mifflin	2008	\$410,000	\$410,000	\$0
117585	SR 3002 E. Charles St. to Bus. 22 (ST72)	Highway Resurfacing on State Route 3002 from East Charles Street to Business Route 22, including ramps in Lewistown Borough, Mifflin County.	PENNDOT	Preliminary Engineering	2	Mifflin	3002	\$150,000	\$150,000	\$0
4616	SR 3017 Bridge Preservation	Bridge Painting on State Route 3017 over Juniata River in Wayne Township, Mifflin County.	PENNDOT	Preliminary Engineering	2	Mifflin	3017	\$150,000	\$150,000	\$0
4616	SR 3017 Bridge Preservation	Bridge Painting on State Route 3017 over Juniata River in Wayne Township, Mifflin County.	PENNDOT	Construction	2	Mifflin	3017	\$1,200,000	\$1,200,000	\$0
5375	T-373 over Roaring Creek Co Br #11	Local bridge Rehabilitation on Esther Furnace Road (T-373) over Roaring Creek in Cleveland Township, Columbia County	PENNDOT	Preliminary Engineering	3	Columbia		\$200,000	\$320,000	\$120,000
117568	SR 42 & 93 over North Branch Susquehanna River	Epoxy Overlay State Routes 42 & 93 over the North Branch of the Susquehanna River, in Montour Township & Berwick Borough Columbia County	PENNDOT	Preliminary Engineering	3	Columbia	42	\$120,000	\$120,000	\$0
117567	SR 93 over North Branch of Susquehanna River	Bridge Painting on State Route 93 over the North Branch of the Susquehanna River in Berwick Borough Columbia County.	PENNDOT	Preliminary Engineering	3	Columbia	93	\$100,000	\$100,000	\$0
117567	SR 93 over North Branch of Susquehanna River	Bridge Painting on State Route 93 over the North Branch of the Susquehanna River in Berwick Borough Columbia County.	PENNDOT	Construction	3	Columbia	93	\$252,659	\$1,752,659	\$1,500,000
117577	SR 2001 over Roaring Creek	Deck Replacement and Substructure Repairs on Mill Road (SR 2001) over Roaring Creek, in Roaring Creek Township Columbia County	PENNDOT	Preliminary Engineering	3	Columbia	2001	\$40,000	\$80,000	\$40,000
117576	SR 4020 over Green Creek	Bridge Rehabilitation work on Green Creek Road (SR 4020) over Green Creek in Orange Township, Columbia County	PENNDOT	Preliminary Engineering	3	Columbia	4020	\$40,000	\$40,000	\$0
78825	SR 4049 over W Branch Fishing Creek	Bridge Rehabilitation on Elk Grove Road (SR 4049) over West Branch of Fishing Creek, in Sugarloaf Township, Columbia County.	PENNDOT	Preliminary Engineering	3	Columbia	4049	\$120,000	\$120,000	\$0
6303	T-396 over E Branch Chillisquaque Ck Cnty Br#12	Local Bridge Replacement on Crawford Road (T-396) over East Branch of Chillisquaque Creek, in Derry Township, Montour County.	PENNDOT	Preliminary Engineering	3	Montour		\$104,000	\$320,000	\$216,000
93524	SR 54 over Stony Brook	Bridge Replacement on State Route 54 over Stony Brook in Derry Township, Montour County.	PENNDOT	Preliminary Engineering	3	Montour	54	\$335,000	\$400,000	\$65,000
103853	SR 54 Corridor Safety Improvement	Realignment, Signalization, and other improvements of the State Route 54 and State Route 642 intersections, Bridge Replacement on State Route 642 over Mauses Creek, and relocation of the park and ride Valley & Mahoning Townships Montour County.	PENNDOT	Utility	3	Montour	54	\$483,190	\$883,190	\$400,000
105525	I-80 West from Stump Rd to Klondike Rd	Mill and resurface Interstate 80 West from Stump Rd to Klondike Rd in Liberty Township, Montour County	PENNDOT	Final Design	3	Montour	80	\$625,000	\$625,000	\$0
105527	I-80 West from Klondike Rd to Mauses Cr Trib	Reconstruction and Bridge Preservation on Interstate 80 West from Klondike Road to Tributary to Mauses Creek in Liberty and Valley Townships, Montour County	PENNDOT	Final Design	3	Montour	80	\$625,000	\$625,000	\$0
93642	T-802 over S Branch of Roaring Creek Cnty #50	Local bridge replacement on Happy Valley Road (T-802) over South Branch of Roaring Creek in Ralpho Township, Northumberland County.	PENNDOT	Final Design	3	Northumberland		\$68,500	\$160,500	\$92,000
99176	SR 11 from SR 405 to C Street	Mill and resurface State Route 11 from State Route 405 to C Street, in Northumberland Borough, Northumberland County.	PENNDOT	Preliminary Engineering	3	Northumberland	11	\$280,000	\$280,000	\$0
88778	SR 54 over Shamokin Creek	Bridge replacement on State Route 54 (Market Street) over Shamokin Creek in Ralpho Township, Northumberland County.	PENNDOT	Preliminary Engineering	3	Northumberland	54	\$80,000	\$280,000	\$200,000
88778	SR 54 over Shamokin Creek	Bridge replacement on State Route 54 (Market Street) over Shamokin Creek in Ralpho Township, Northumberland County.	PENNDOT	Final Design	3	Northumberland	54	\$150,000	\$550,000	\$400,000
87909	SR 54 from Montour County to Boyd Station	Resurface State Route 54 from Montour County Line to Boyd Station in Rush Township and Riverside Borough, Northumberland County.	PENNDOT	Construction	3	Northumberland	54	\$2,200,000	\$2,200,000	\$0
115583	Shamokin Cr to SR 11	Mill and resurface on State Route 147 from Shamokin Creek to Church St, base repairs from Church St. to State Route 11, and Bridge preservation on State Route 147 over Shamokin Creek, in City of Sunbury and Upper Augusta Township, Northumberland County	PENNDOT	Preliminary Engineering	3	Northumberland	147	\$245,000	\$245,000	\$0
78935	SR 225 over Mahantango Creek	Bridge Rehabilitation on State Route 225 over Mahantango Creek, Lower Mahanoy Township, Northumberland County	PENNDOT	Preliminary Engineering	3	Northumberland	225	\$171,000	\$171,000	\$0
117566	SR 225 over Mahanoy Creek	Bridge Painting on State Route 225 over Mahanoy Creek in, Little Mahanoy Township Northumberland County.	PENNDOT	Preliminary Engineering	3	Northumberland	225	\$135,000	\$135,000	\$0

MPMS	PROJECT TITLE	PROJECT DESCRIPTION	PROJECT ADMINISTRATOR	PHASE	DISTRICT	COUNTY	STATE ROUTE	OBLIGATION* FFY 2022	PROG. TOTAL FFY 2021 TO 2024	FED FUNDS REMAINING
115584	Church St to Shikellamy Ave	Mill and resurface on State Route 405 from Church St to Shikellamy Ave, and Bridge Preservation work on two bridges on State Route 405 over the North Branch of the Susquehanna River, in Sunbury City and Upper August Township, Northumberland County	PENNDOT	Preliminary Engineering	3	Northumberland	405	\$275,000	\$275,000	\$0
114101	Bridge Painting Off System Bridges SEDA-COG	Bridge Preservation - Bridge Painting on Eight Bridges in Various Municipalities in Columbia, Montour, and Northumberland Counties.	PENNDOT	Construction	3	Northumberland	2003	\$670,000	\$850,000	\$180,000
76401	CSVT Southern Section	Earthwork and structure construction for the Central Susquehanna Valley Transportation project from the State Route 11 and 522 Interchange in the Shamokin Dam Borough to State Route 15 and 147 interchange in Winfield and to State Route 61 in the Shamokin Dam Borough in Monroe Township and Shamokin Dam Borough in Snyder County.	PENNDOT	Construction	3	Snyder	15	\$98,950,000	\$126,500,000	\$27,550,000
106155	SR 104 over Mahantango Creek	Bridge Rehabilitation on State Route 104 over Mahantango Creek in Chapman Township, Snyder County.	PENNDOT	Construction	3	Snyder	104	\$3,540,000	\$3,540,000	\$0
6886	US 522 over Tributary to Middle Creek	Bridge replacement on State Route 522 over Tributary to Middle Creek, in Spring Township, Snyder County.	PENNDOT	Final Design	3	Snyder	522	\$450,000	\$450,000	\$0
6886	US 522 over Tributary to Middle Creek	Bridge replacement on State Route 522 over Tributary to Middle Creek, in Spring Township, Snyder County.	PENNDOT	Utility	3	Snyder	522	\$55,000	\$55,000	\$0
6886	US 522 over Tributary to Middle Creek	Bridge replacement on State Route 522 over Tributary to Middle Creek, in Spring Township, Snyder County.	PENNDOT	Right of Way	3	Snyder	522	\$45,000	\$45,000	\$0
117579	SR 4016 over N Branch Middle Creek	Deck Replacement and Substructure Repairs on Middle Road (SR 4016) over North Branch Middle Creek, in Adams Township Snyder County	PENNDOT	Preliminary Engineering	3	Snyder	4016	\$150,000	\$150,000	\$0
103850	T-514 over White Deer Crk	Bridge Rehabilitation on Gray Hill Road (T-514) over White Deer Creek in White Deer Township, Union County.	PENNDOT	Construction	3	Union		\$1,200,000	\$1,520,689	\$320,689
112602	T-707 over Laurel Run	Bridge Replacement on Palmen Road (T-707) over Laurel Run in Hartley Township, Union County	PENNDOT	Construction	3	Union		\$1,100,000	\$1,100,000	\$0
110828	SR 45 to Orchard Ln	Resurface State Route 304 from State Route 45 to Orchard Lane in Mifflinburg Borough, Union County.	PENNDOT	Construction	3	Union	304	\$848,460	\$2,050,000	\$1,201,540
78979	SR 1011 over White Deer Creek	Bridge rehabilitation on Old Route 15 (SR 1011) over White Deer Creek in White Deer Township, Union County.	PENNDOT	Utility	3	Union	1011	\$300,000	\$150,000	\$(150,000)
117901	West Shore RRX, SR 1011 and River Rd.	Rail crossing upgrades for motion detection, signals, and crossing surface for two West Shore Railroad, Operated by Union County Industrial Railroad, crossings on Old Route 15 Rd. (SR 1011) and River Rd., in White Deer Township, Union County.	PENNDOT	Construction	3	Union	1011	\$900,000	\$900,000	\$0
3808	Slide Hazards DB	Slide Hazard Safety Improvements on SR 120 near Shintown Lane North in East KeatingTownship, Clinton County.	PENNDOT	Construction	2	Clinton	120	\$(7,966)	\$0	\$0
111459	East Church Street Streetscape	Streetscape Clinton County City of Lock Haven Project ID:18-1000-2017	PENNDOT	Preliminary Engineering	2	Clinton	150	\$(1,383)	\$0	\$0
111459	East Church Street Streetscape	Streetscape Clinton County City of Lock Haven Project ID:18-1000-2017	PENNDOT	Construction	2	Clinton	150	\$(13,472)	\$0	\$0
3784	PA 477 Fishing Ck Br.	Bridge Replacement on State Route 477 over Fishing Creek in Loganton Borough, Clinton County.	PENNDOT	Preliminary Engineering	2	Clinton	477	\$(553)	\$0	\$0
88181	Long Run Bridge II	Bridge replacement on State Route 477 over Long Run in Lamar Township, Clinton County.	PENNDOT	Construction	2	Clinton	477	\$(36,211)	\$0	\$0
111458	Clinton County Rail Trail	Clinton County Rail to Trail project is to convert an abandoned railroad bridge over the Susquehanna River, to a rail/trail and construct associated connecting ramps is adjacent to Spook Hollow Road in Wayne and Pine Creek Townships, Clinton County.	PENNDOT	Preliminary Engineering	2	Clinton	2012	\$(320)	\$0	\$0
113429	SR 22 High Friction Surface HSIP	High Friction Surface Safety Improvement on SR 22 (2 Locations) in Juniata County, SR 322 in Mifflin County, and I-80 in Clinton County	PENNDOT	Preliminary Engineering	2	Juniata	22	\$(79,762)	\$0	\$0
113429	SR 22 High Friction Surface HSIP	High Friction Surface Safety Improvement on SR 22 (2 Locations) in Juniata County, SR 322 in Mifflin County, and I-80 in Clinton County	PENNDOT	Construction	2	Juniata	22	\$(171,908)	\$0	\$0
106307	US 22 2018 Bridge Preserv	Bridge preservation on US Route 22 over SR 1002 in Fermanagh Township, Juniata County.	PENNDOT	Construction	2	Juniata	22	\$(196,944)	\$0	\$0
4219	Juniata River Bridge	Bridge Replacement on State Route 35 (Bridge Street) over the Juniata River, west of State Route 3002 (Main Street) in Mifflintown Borough, Juniata County.	PENNDOT	Final Design	2	Juniata	35	\$(38)	\$0	\$0
81405	SR 35 Cocolamus Crk	Bridge replacement on PA State Route 35 over Cocolamus Creek approximately 2 1/4 miles west of the Snyder County Line in Fayette Township, Juniata County.	PENNDOT	Utility	2	Juniata	35	\$(828)	\$0	\$0
4641	2019 SEDA-COG Br. Preservation	Bridge Improvements on 3 Bridge Structures in Juniata County. 1. SR 35 over Schweyer Run in Mifflintown Borough 2. SR 3002 over Lost Creek in Fermanagh Township 3. SR 3023 over Lick Creek in Lack Township	PENNDOT	Right of Way	2	Juniata	35	\$(15,444)	\$0	\$0
4641	2019 SEDA-COG Br. Preservation	Bridge Improvements on 3 Bridge Structures in Juniata County. 1. SR 35 over Schweyer Run in Mifflintown Borough 2. SR 3002 over Lost Creek in Fermanagh Township 3. SR 3023 over Lick Creek in Lack Township	PENNDOT	Construction	2	Juniata	35	\$(304,405)	\$0	\$0
4196	Horning Run Bridge	Bridge replacement on SR 3002-A01 over Horning Run in Fermanagh Township, Juniata County.	PENNDOT	Final Design	2	Juniata	3002	\$(74,009)	\$0	\$0
4196	Horning Run Bridge	Bridge replacement on SR 3002-A01 over Horning Run in Fermanagh Township, Juniata County.	PENNDOT	Utility	2	Juniata	3002	\$(3,500)	\$0	\$0
4196	Horning Run Bridge	Bridge replacement on SR 3002-A01 over Horning Run in Fermanagh Township, Juniata County.	PENNDOT	Right of Way	2	Juniata	3002	\$(500)	\$0	\$0

MPMS	PROJECT TITLE	PROJECT DESCRIPTION	PROJECT ADMINISTRATOR	PHASE	DISTRICT	COUNTY	STATE ROUTE	OBLIGATION* FFY 2022	PROG. TOTAL FFY 2021 TO 2024	FED FUNDS REMAINING
4196	Horning Run Bridge	Bridge replacement on SR 3002-A01 over Horning Run in Fermanagh Township, Juniata County.	PENNDOT	Construction	2	Juniata	3002	\$(48,599)	\$0	\$0
107816	Bridge Preservation ROW	Bridge Preservation Right-of-Way on SR 3023 over Lick Creek in Lack Township, Juniata County.	PENNDOT	Right of Way	2	Juniata	3023	\$(41,950)	\$0	\$0
4689	Lewistown Signal Reconstruction	Signal Improvement on Third Street, Five (5) Signalized Intersections, in Lewistown Borough, Mifflin County.	PENNDOT	Preliminary Engineering	2	Mifflin		\$(60,000)	\$0	\$0
4689	Lewistown Signal Reconstruction	Signal Improvement on Third Street, Five (5) Signalized Intersections, in Lewistown Borough, Mifflin County.	PENNDOT	Right of Way	2	Mifflin		\$(76,138)	\$0	\$0
112598	SR 22 Resurfacing	Highway Resurfacing and Concrete Pavement Repair on SR 22/322 in Lewistown Borough, Derry and Granville Townships, Mifflin County.	PENNDOT	Construction	2	Mifflin	22	\$(655,543)	\$0	\$0
106508	2018 Cable Median Barrier	High Tension Cable Median Barrier at 36 location on various routes in various municipalities of Centre, Clinton, Mifflin and Juniata Counties.	PENNDOT	Construction	2	Mifflin	22	\$(225,544)	\$0	\$0
109871	US Route 22 High Friction Surface HSIP	High Friction Surface Safety Improvement on US Route 22 (5 locations) in Mifflin County and various routes (4 locations) in Clinton County.	PENNDOT	Preliminary Engineering	2	Mifflin	22	\$(94,609)	\$0	\$0
109871	US Route 22 High Friction Surface HSIP	High Friction Surface Safety Improvement on US Route 22 (5 locations) in Mifflin County and various routes (4 locations) in Clinton County.	PENNDOT	Construction	2	Mifflin	22	\$(61,567)	\$0	\$0
93312	Reedsville to Burnham	Highway resurfacing on US Route 322 from Reedsville to Burnham in Brown and Derry Township, Mifflin County.	PENNDOT	Right of Way	2	Mifflin	322	\$(10,000)	\$0	\$0
93312	Reedsville to Burnham	Highway resurfacing on US Route 322 from Reedsville to Burnham in Brown and Derry Township, Mifflin County.	PENNDOT	Construction	2	Mifflin	322	\$(440,497)	\$0	\$0
72767	Lewistown to Co. Line Betterment	Highway Resurfacing on State Route 522, from Lewistown to the Snyder County Line, in Decatur Township, Mifflin County.	PENNDOT	Preliminary Engineering	2	Mifflin	522	\$(148,002)	\$0	\$0
111461	Brown Township Streetscape	Streetscape improvements in Brown Township, Mifflin County.	PENNDOT	Preliminary Engineering	2	Mifflin	1005	\$(129)	\$0	\$0
101959	Lewistown Safety Corridor	Safety improvement, traffic signal upgrades, on SR 1005 in Lewistown Borough, Mifflin County.	PENNDOT	Final Design	2	Mifflin	1005	\$(242,847)	\$0	\$0
101959	Lewistown Safety Corridor	Safety improvement, traffic signal upgrades, on SR 1005 in Lewistown Borough, Mifflin County.	PENNDOT	Construction	2	Mifflin	1005	\$(149,389)	\$0	\$0
4643	Kish Creek Bridge	Bridge replacement on SR 2002, over Kishacoquillas Creek, in Burnham Borough, Mifflin County.	PENNDOT	Utility	2	Mifflin	2002	\$(97,657)	\$0	\$0
4719	Jacks Creek Bridge	Bridge improvements on State Route 2004 (Back Maitland Road) over Jacks Creek Bridge approximately 2 miles southwest of the Village of Maitland in Derry Township, Mifflin County.	PENNDOT	Preliminary Engineering	2	Mifflin	2004	\$(94,097)	\$0	\$0
91609	SR 3001 Kish Creek Br	Bridge Replacement on State Route 3001 (Main Street) over Kishacoquillas Creek in Lewistown Borough, Mifflin County.	PENNDOT	Construction	2	Mifflin	3001	\$(180,535)	\$0	\$0
108121	Monument Square Phase V 2016 TAP	Monument Square Streetscape Project, Phase V, includes new trees, sidewalks with adjoining pavers, curbing, ADA compliant curb ramps, pedestrian level light standards and underground wiring. The project will improve pedestrian access in Lewistown Borough, Mifflin County.	PENNDOT	Construction	2	Mifflin	3001	\$(23,070)	\$0	\$0
101897	Business 3002 Resurfacing	Highway Resurfacing on State Route 3002 (Business US 22) and State Route 3006 in Granville Township and Lewistown Borough, Mifflin County.	PENNDOT	Preliminary Engineering	2	Mifflin	3002	\$(59,424)	\$0	\$0
101897	Business 3002 Resurfacing	Highway Resurfacing on State Route 3002 (Business US 22) and State Route 3006 in Granville Township and Lewistown Borough, Mifflin County.	PENNDOT	Final Design	2	Mifflin	3002	\$(97,394)	\$0	\$0
101897	Business 3002 Resurfacing	Highway Resurfacing on State Route 3002 (Business US 22) and State Route 3006 in Granville Township and Lewistown Borough, Mifflin County.	PENNDOT	Utility	2	Mifflin	3002	\$(74,000)	\$0	\$0
101897	Business 3002 Resurfacing	Highway Resurfacing on State Route 3002 (Business US 22) and State Route 3006 in Granville Township and Lewistown Borough, Mifflin County.	PENNDOT	Right of Way	2	Mifflin	3002	\$(56,017)	\$0	\$0
114964	DF Work 2018 Flood Columbia County	DF work for 2018 Flood Columbia County	PENNDOT	Construction	3	Columbia		\$(948)	\$0	\$0
87882	SR 339 from West St to Smith Hollow Rd	Resurface, improve and widen shoulders, and extend two bridges width, on SR 339 from West Street in the Village of Mifflinville to Smith Hollow Road in Mifflin Township in Columbia County.	PENNDOT	Construction	3	Columbia	339	\$(131,833)	\$0	\$0
91431	SR 487 over Tributary to Fishing Creek	Bridge improvement on SR 487 over the Tributary to Fishing Creek in Orange Township, Columbia County.	PENNDOT	Construction	3	Columbia	487	\$(114,300)	\$0	\$0
97652	SR 487 from Susquehanna River to SR 1004	Reconstruct Roadway on SR 487 from Susquehanna River to SR 1004 (Old Berwick Road), Bloomsburg, Columbia County.	PENNDOT	Preliminary Engineering	3	Columbia	487	\$(24,587)	\$0	\$0
112011	SR487 over Fishing Creek Flood Repair 2018	Flood repair on SR487 over Fishing Creek in Stillwater Borough, Columbia County	PENNDOT	Construction	3	Columbia	487	\$(2,896)	\$96,851	\$0
111850	SR 1022 Flood Repairs 2018	Flood Repairs (2018 Flood) - Shoulder and drainage repairs, debris removal, deposition removal on Zaner's bridge Road (SR 1022) in Fishing Creek Township, Columbia County.	PENNDOT	Construction	3	Columbia	1022	\$(224)	\$0	\$0
103853	SR 54 Corridor Safety Improvement	Realignment, Signalization, and other improvements of the State Route 54 and State Route 642 intersections, Bridge Replacement on State Route 642 over Mauses Creek, and relocation of the park and ride Valley & Mahoning Townships Montour County.	PENNDOT	Study	3	Montour	54	\$(10,357)	\$0	\$0
111185	I-80 from SR 3013 to SR 54	Roadway Restoration -concrete patching, spall repair, joint sealing, and diamond grinding on Interstate 80 from Mexico Road to State Route 54, Liberty & Valley Townships, Montour County	PENNDOT	Construction	3	Montour	80	\$(910,803)	\$0	\$0
97653	US 11 from Bridge Ave to Old Danville Rd	Reconstruct roadway on US Route 11 From Bridge Avenue to Old Danville Road in Northumberland Borough, Northumberland County. This project includes earmark demo ID PA684.	PENNDOT	Final Design	3	Northumberland	11	\$(246,436)	\$0	\$0
97653	US 11 from Bridge Ave to Old Danville Rd	Reconstruct roadway on US Route 11 From Bridge Avenue to Old Danville Road in Northumberland Borough, Northumberland County. This project includes earmark demo ID PA684.	PENNDOT	Construction	3	Northumberland	11	\$(228,525)	\$0	\$0
107751	US 11 from the West Branch River Bridge to SR 147	Mill, resurface, and add left turn lane on US Route 11 from the West Branch River Bridge to the end of the existing concrete at the underpass of the Norfolk Southern and North Shore railroads, Northumberland and Point Townships, Northumberland County.	PENNDOT	Preliminary Engineering	3	Northumberland	11	\$(55,048)	\$0	\$0

MPMS	PROJECT TITLE	PROJECT DESCRIPTION	PROJECT ADMINISTRATOR	PHASE	DISTRICT	COUNTY	STATE ROUTE	OBLIGATION* FFY 2022	PROG. TOTAL FFY 2021 TO 2024	FED FUNDS REMAINING
111351	NSHR #2 RRX	Rail crossing upgrades to include Masts, Gates, and Lights at Rail Crossings on King Street (State Route 147), Orange Street, Northumberland Borough, Northumberland County, Church and Wall St., Danville Borough Montour County, Central Road, Scott Township, South Eaton Street, Berwick Borough, and Industrial Drive, South Centre Township, Columbia County.	PENNDOT	Construction	3	Northumberland	147	\$(749)	\$58,252	\$0
6846	T-469 over Swift Run	Bridge replacement on T-469 (Sawmill Road) over Swift Run in Spring Township, Snyder County.	PENNDOT	Final Design	3	Snyder		\$(30,275)	\$0	\$0
98577	SR 2010 over Tributary to Middle Creek	Bridge replacement on SR 2010 over Tributary to Middle Creek in Washington Township, Snyder County.	PENNDOT	Right of Way	3	Snyder	2010	\$(19,380)	\$0	\$0
76397	CSVT River Bridge	Susquehanna River Bridge near Winfield conection US 15 to SR 147 2 on 4	PENNDOT	Construction	3	Union	15	\$(1,562,787)	\$0	\$0
76398	CSVT North Section	Earthwork and structure work for the Central Susquehanna Valley Transportation project from the Susquehanna River in Point Township to approximately State Route 147 and State Route 405 intersection in West Chillisquaque Township in Northumberland County.	PENNDOT	Construction	3	Union	15	\$(82)	\$0	\$0
93644	SR 3001 over Whitethorn Run	Bridge Replacement on State Route 3001 (Paddy Mountain Road) over Whitethorn Run in Hartley Township, Union County.	PENNDOT	Final Design	3	Union	3001	\$(17,047)	\$0	\$0
93644	SR 3001 over Whitethorn Run	Bridge Replacement on State Route 3001 (Paddy Mountain Road) over Whitethorn Run in Hartley Township, Union County.	PENNDOT	Right of Way	3	Union	3001	\$(20,000)	\$0	\$0

* Negative amounts in the obligation column are a result of de-obligating unused funds for a project. De-obligation is a release of funds due to either the cancelation or completion of a project.

**FFY 2021 Interstate TIP
FHWA Obligation Report
Obligations 10/1/21 to 9/30/22**

MPMS	PROJECT TITLE	PROJECT DESCRIPTION	PROJECT ADMINISTRATOR	PHASE	DISTRICT	COUNTY	STATE ROUTE	OBLIGATION* FFY 2022	PROG. TOTAL FFY 2021 TO 2024	FED FUNDS REMAINING
115766	I-80 from Reichart Rd to SR 11	Mill, resurface, and centerline patch, with bridge preservation work, on Interstate 80 from Reichart Road to State Route 11, in Hemlock, Mt Pleasant, Scott, South Centre Townships, and Town of Bloomsburg, Columbia County.	PENNDOT	Construction	3	Columbia	80	\$10,055,000	\$10,055,000	\$0
97547	I-80 West Bound Lane from SR 3013 to SR 3006	Concrete patching, joint sealing, diamond grinding with bituminous overlay on Interstate 80 West from Mexico Rd (SR 3013) to SR 3006 in Liberty Township, Montour County.	PENNDOT	Final Design	3	Montour	80	\$625,000	\$625,000	\$0
97556	I-80 East Bound Lane from SR 3013 to SR 54	Concrete patching, joint sealing, diamond grinding with bituminous overlay on Interstate 80 East from Mexico Rd (SR 3013) to State Route 54 in Valley Township, Montour County.	PENNDOT	Final Design	3	Montour	80	\$625,000	\$625,000	\$0
5645	I-80 Susq Riv Br	Bridge Replacement on I-80 over the Susquehanna River, Mifflin & South Centre (Twps), Columbia County.	PENNDOT	Construction	3	Columbia	80	\$(3)	\$0	\$0
105514	I-80 West Bound from Mile Run to SR 1010 INTERIN	Microsurface on SR 80 WB from Mile Run to SR 1010 in White Deer & West Buffalo Twps, Union County	PENNDOT	Construction	3	Union	80	\$(68,943)	\$0	\$0

* Negative amounts in the obligation column are a result of de-obligating unused funds for a project. De-obligation is a release of funds due to either the cancelation or completion of a project.

Transit Grants

Below are the 2021-22 federally funded transit grants awarded to transit agencies operating in the SEDA-COG MPO region. Other transit agencies operating in the SEDA-COG MPO area had no federal grant activity during 2021-22 (Lower Anthracite Transportation System), or they run their agreements through other Planning Partners (rabbittransit, STEP, Inc.).

Project	MPMS	Sub-recipient	Project Administrator	County	Federal Fund Category	Obligated Federal Funds (FFY 2021)	Federal Funds Remaining
Revenue Rolling Stock (Under 30 Foot Buses): Acquiring two accessible buses to provide shared ride service	114530	Call A Ride Service, Inc.	PennDOT	Mifflin, Juniata	5310	\$144,000	\$144,000
Revenue Rolling Stock (Under 30 Foot Buses): Acquiring 15 accessible vehicles to provide shared ride service	102220	Susquehanna Regional Transportation Authority (rabbittransit)	PennDOT	Union, Montour, York, Perry, Franklin	5310	\$1,027,099	\$1,027,099