

# SEDA-COG Metropolitan Planning Organization Annual Listing of Obligated Projects Federal Fiscal Year 2020



Left photo: MPMS 91431 location  
Top right photo: MPMS 101897 location  
Bottom right photo: MPMS 111351 location



Prepared by: SEDA-Council of Governments, November 2020

[www.seda-cog.org](http://www.seda-cog.org)

**SEDA-COG Metropolitan Planning Organization (MPO)**  
**Annual Listing of Federally Obligated Projects**  
**FFY 2020 (October 1, 2019 – September 30, 2020)**

**SEDA-COG MPO**

The SEDA-COG MPO is the official organization through which federal transportation funds are distributed, planned, programmed and implemented in Clinton, Columbia, Juniata, Mifflin, Montour, Northumberland, Snyder, and Union counties. The SEDA-COG MPO operates via an agreement with PennDOT to approve studies and capital improvements for highways, bridges, transit, railroads, bicycle/pedestrian facilities and other transportation concerns. Four primary documents are developed and approved by the MPO: the region's Long Range Transportation Plan (LRTP), Transportation Improvement Program (TIP), Public Participation Plan (PPP) and Unified Planning Work Program (UPWP). In executing its work, the MPO strives to provide a balanced transportation system for the maximum benefit of people, businesses, and communities.

**Purpose of this Report**

The Annual List of Obligated Projects report is a requirement of current federal transportation law, known as the Fixing America's Surface Transportation Act (FAST Act), which requires MPOs to publish an annual report on the projects for which federal funding has been obligated during the federal fiscal year from October 1 to September 30. The federal regulation states, in plain language, that:

"An annual listing of projects, including investments in pedestrian walkways and bicycle transportation facilities, for which federal funds have been obligated in the preceding program year shall be published or otherwise made available through the cooperative effort of the state, public transportation operator(s), and metropolitan planning organization. The listing shall be consistent with the categories identified in the TIP."

The Federal Highway Administration defines obligation as the "federal government's legal commitment (promise) to pay or reimburse states or other entities for the federal share of a project's eligible costs." Thus, an obligated project is one that has been approved by the federal government for reimbursement, though not necessarily reimbursed yet. This reimbursement can be for projects that have been initiated in previous years or will not be completed until future years, and the final cost of a project may be different from the amount obligated. Funding can also be "de-obligated" from projects in response to lower than expected costs, project cancellation, or other factors, and these released resources are often redirected to other projects.

This report responds to the directive set forth in federal statute. It lists all federally-funded transportation projects in the SEDA-COG MPO region that were obligated during Federal Fiscal Year 2020 (October 1, 2019 to September 30, 2020).

During FFY 2020, the SEDA-COG MPO saw a total of 91 obligations worth **\$38,248,441**. The obligated funding came from the following funding classes:

- Bridge Off System: \$3,245,898 (8.5% of total)
- Enhancements: \$4,659,342 (12.2% of total)
- National Highway Performance Program: \$14,017,914 (36.6% of total)
- Rail & Highway: \$1,380,464 (3.6% of total)
- Safety: \$2,438,373 (6.4% of total)
- Special Funding: \$1,562,889 (4.1% of total)
- Surface Transportation Program: \$10,943,561 (28.6% of total)

### **Funding Class Descriptions:**

***Bridge Off System Funds:*** Used for bridges greater than 20 feet that are located on Rural Minor Collectors, Rural Local Roads or Urban Local Roads.

***Enhancements Funds:*** Used for projects which provide access for pedestrians, bicycles, and other non-motorized forms of transportation; includes off-road trails or on-street bike/pedestrian facilities.

***NHPP Funds:*** Used for construction of new facilities, maintenance and support of the National Highway System (NHS).

***Rail & Highway Funds:*** Most commonly used for grade crossing projects.

***Safety Funds:*** Used for roadway design features or hardware, such as guiderails, traffic signals, rumble strips, signage, etc., that help reduce crashes or minimize their severity.

***Special Funding:*** Funds earmarked for specific projects by members of Congress allocated under prior transportation bills or for repair or reconstruction of Federal-aid highways which have suffered serious damage as a result of declared natural disasters.

***Surface Transportation Program (STP) Funds:*** Flexible funding used for federal-aid highway, bridge and tunnel projects on any public road, pedestrian and bicycle infrastructure, and transit capital projects, including intercity bus terminals.

All of the obligated projects included in the tables starting on page 6 are filtered in ascending order by their project number (MPMS #) and county location.

**\*PennDOT serves as the project administrator responsible for carrying out the project or phase for all projects in the tables starting on page 6, except for MPMS 7498: T-309 over Penns Creek, which is administered by Union County and Hartley Township.**

### **Other Table Definitions:**

**MPMS** stands for Multi-modal Project Management System number. It is an inventory of

Highway/Bridge and Rail/Freight projects that contains information about project phase milestones, funding, and status. Additional project information can be found at PennDOT's [One Map](#) interactive online map and searching by the MPMS # as the Asset ID. This interactive map also provides project search by region, route, address or intersection options and gives project details such as let date, estimated completion date, etc.

**Short Title** is the short project title

**Project Description** is the brief project description from MPMS

**PH.** is the Project Phase: PE (Preliminary Engineering); FD (Final Design); UTL (Utilities); ROW (Right of Way); CON (Construction); Study

**County** is the county in which the project is located

**SR** is the State Route (SR) number

**Obligated** is the amount of obligated federal funds for the FFY of this report

**Prog. Total** is the amount of federal funds programmed for the project

**Fed. Funds Remaining** is the amount of federal funding remaining and available for subsequent years

**Abbreviations Used in Short Project Titles:**

Br or Brg – Bridge

Ck or Crk or Cr – Creek

DB – Design Build

DF – Department Force

Ele. Ave. – Electric Avenue

HSIP – Highway Safety Improvement Program

I – Interstate Route Number

NS – Norfolk Southern Railroad

NSHR – North Shore Railroad

Ov – Over

Ph – Phase

Rpr – Repair

RR – Railroad

RRX – Railroad Crossing

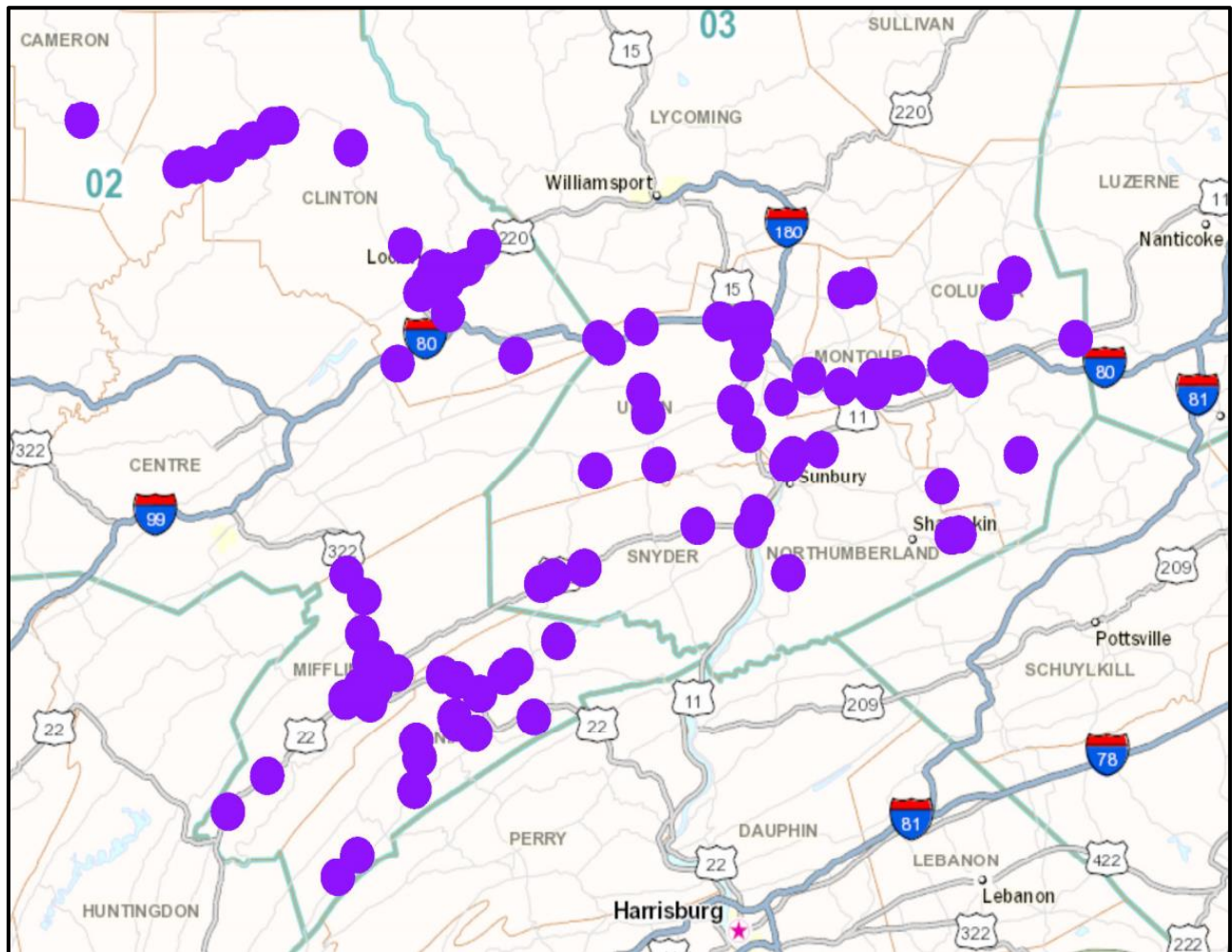
T – Township Route Number

Tb or Tr or Trib – Tributary

UCIR – Union County Industrial Railroad

**Project Locations:**

The below map shows the locations of mappable projects that were obligated during FFY 2020.



**Annual Obligations Report FFY 2020**  
**Obligated Projects**

MPMS	SHORT TITLE	PROJECT DESCRIPTION	PH.	COUNTY	SR	OBLIGATED FUNDS FFY 2020	PROG. TOTAL	FED. FUNDS REMAINING	FUND CLASS
3784	PA 477 Fishing Ck Br.	Bridge replacement on State Route 477 over Fishing Creek in Loganton Borough, Clinton County	PE	Clinton	477	\$13,500	\$13,500	\$0	STP
3808	Slide Hazards DB	Slide hazard safety improvements on SR 120 near Shintown Lane North in East Keating Township, Clinton County	CON	Clinton	120	\$74,365	\$1,707,078	\$1,632,713	STP
3867	PA 0120 Shintown Run	Bridge replacement on SR 120 over Shintown Run in Noyes Township, Clinton County	PE	Clinton	120	\$2,175	\$0	\$(2,175)	STP
4190	Bridge over NS Railroad	Bridge replacement on State Route 75 over Norfolk Southern Railroad in Port Royal Borough, Juniata County	FD	Juniata	75	\$200,000	\$750,000	\$550,000	STP
4643	Kish Creek Bridge	Bridge replacement on SR 2002 over Kishacoquillas Creek in Burnham Borough, Mifflin County	CON	Mifflin	2002	\$200,000	\$200,000	\$0	STP
4719	Jacks Creek Bridge	Bridge improvements on State Route 2004 (Back Maitland Road) over Jacks Creek Bridge approximately 2 miles southwest of the Village of Maitland in Derry Township, Mifflin County	CON	Mifflin	2004	\$604,610	\$2,000,000	\$1,395,390	STP
6754	SR 45 over Chillisquaque Creek	Bridge deck rehabilitation on State Route 45 over Chillisquaque Creek in East Chillisquaque and West Chillisquaque Townships, Northumberland County	CON	Northumberland	45	\$161,268	\$618,083	\$456,815	STP
6872	US 522 over Beaver Creek	Bridge replacement on US Route 522 over Beaver Creek in Spring Township, Snyder County	FD	Snyder	522	\$10,000	\$150,000	\$140,000	NHPP
6872	US 522 over Beaver Creek	Bridge replacement on US Route 522 over Beaver Creek in Spring Township, Snyder County	ROW	Snyder	522	\$30,000	\$30,000	\$0	NHPP
6872	US 522 over Beaver Creek	Bridge replacement on US Route 522 over Beaver Creek in Spring Township, Snyder County	CON	Snyder	522	\$2,369,110	\$2,356,000	\$(13,110)	NHPP
6899	SR 522 over Beaver Creek	Bridge replacement on US Route 522 over Beaver Creek in Spring Township, Snyder County	PE	Snyder	522	\$100,000	\$300,000	\$200,000	NHPP
6907	SR 522 over Tb Middle Crk	Bridge replacement on US Route 522 over Tributary to Middle Creek in Beavertown Borough, Snyder County	PE	Snyder	522	\$300,000	\$300,000	\$0	NHPP
6909	SR 522 ov Tb Middle Creek	Bridge replacement on US Route 522 over Tributary to Middle Creek #2 in Beavertown Borough, Snyder County	PE	Snyder	522	\$300,000	\$300,000	\$0	NHPP
72351	T-321 over Sweitzers Run	Bridge replacement on Long Road (Township Road 321) in Limestone Township, Union County	FD	Union		\$84,000	\$84,000	\$0	Bridge Off
72351	T-321 over Sweitzers Run	Bridge replacement on Long Road (Township Road 321) in Limestone Township, Union County	UTL	Union		\$16,000	\$16,000	\$0	Bridge Off



MPMS	SHORT TITLE	PROJECT DESCRIPTION	PH.	COUNTY	SR	OBLIGATED FUNDS FFY 2020	PROG. TOTAL	FED. FUNDS REMAINING	FUND CLASS
72351	T-321 over Sweitzers Run	Bridge replacement on Long Road (Township Road 321) in Limestone Township, Union County	ROW	Union		\$16,000	\$16,000	\$0	Bridge Off
72351	T-321 over Sweitzers Run	Bridge replacement on Long Road (Township Road 321) in Limestone Township, Union County	CON	Union		\$240,000	\$600,000	\$360,000	Bridge Off
72354	T-383 over Rapid Run	Bridge replacement on T-383 (Walbash Road) over Rapid Run in West Buffalo Township, Union County	FD	Union		\$72,000	\$72,000	\$0	Bridge Off
72354	T-383 over Rapid Run	Bridge replacement on T-383 (Walbash Road) over Rapid Run in West Buffalo Township, Union County	UTL	Union		\$96,000	\$96,000	\$0	Bridge Off
72354	T-383 over Rapid Run	Bridge replacement on T-383 (Walbash Road) over Rapid Run in West Buffalo Township, Union County	ROW	Union		\$48,000	\$48,000	\$0	Bridge Off
72354	T-383 over Rapid Run	Bridge replacement on T-383 (Walbash Road) over Rapid Run in West Buffalo Township, Union County	CON	Union		\$264,000	\$264,000	\$0	Bridge Off
78979	SR 1011 over White Deer Creek	Bridge rehabilitation on SR 1011 over White Deer Creek in White Deer Township, Union County	FD	Union	1011	\$100,000	\$100,000	\$0	STP
78979	SR 1011 over White Deer Creek	Bridge rehabilitation on SR 1011 over White Deer Creek in White Deer Township, Union County	ROW	Union	1011	\$50,000	\$50,000	\$0	STP
85206	SR 3023 over Tuscarora Cr	Bridge replacement on State Route 3023 over Tuscarora Creek in Lack Township, Juniata County	FD	Juniata	3023	\$340,000	\$340,000	\$0	Bridge Off
85276	Br Long Hollow II	Bridge improvement on US Route 22 (William Penn Highway) over unnamed tributary to Long Hollow Run approximately 3 ¾ miles north of the Huntingdon County Line in Wayne Township, Mifflin County	PE	Mifflin	22	\$300,000	\$300,000	\$0	NHPP
88181	Long Run Bridge II	Bridge replacement on State Route 477 over Long Run in Lamar Township, Clinton County	CON	Clinton	477	\$664,257	\$664,257	\$0	STP
89985	Big Fishing Creek Br 2	Bridge replacement on SR 64 over Big Fishing Creek in Porter Township, Clinton County	CON	Clinton	64	\$195,000	\$195,000	\$0	STP
91431	SR 487 over Tributary to Fishing Creek	Bridge improvement on SR 487 over the Tributary to Fishing Creek in Orange Township, Columbia County	CON	Columbia	487	\$1,013,800	\$1,265,000	\$251,200	STP
91608	SR 1012 Laurel Run Br	Bridge improvement on State Route 1012 over Laurel Run in Armagh Township, near Milroy, Mifflin County	PE	Mifflin	1012	\$300,000	\$300,000	\$0	STP
91609	SR 3001 Kish Creek Br	Bridge replacement on State Route 3001 (Main Street) over Kishacoquillas Creek in Lewistown Borough, Mifflin County	PE	Mifflin	3001	\$90,621	\$90,621	\$0	STP
91609	SR 3001 Kish Creek Br	Bridge replacement on State Route 3001 (Main Street) over Kishacoquillas Creek in Lewistown Borough, Mifflin County	CON	Mifflin	3001	\$423,029	\$4,346,004	\$3,922,975	STP
93316	Ele. Ave. Betterment	Highway resurfacing on State Route 1005 in Lewistown Borough, Mifflin County	PE	Mifflin	1005	\$37,500	\$511,237	\$473,737	STP
93343	Lock Haven Signal Improvement	Signal Improvements on State Route 150 in Flemington Borough, Clinton County	CON	Clinton	150	\$41,843	\$785,000	\$743,157	Safety

MPMS	SHORT TITLE	PROJECT DESCRIPTION	PH.	COUNTY	SR	OBLIGATED FUNDS FFY 2020	PROG. TOTAL	FED. FUNDS REMAINING	FUND CLASS
93580	SR 2003 over Mill Creek	Bridge replacement on State Route 2003 (Old Reading Road) over Mill Creek in Roaring Creek Township, Columbia County	FD	Columbia	2003	\$130,000	\$130,133	\$133	Bridge Off
93580	SR 2003 over Mill Creek	Bridge replacement on State Route 2003 (Old Reading Road) over Mill Creek in Roaring Creek Township, Columbia County	ROW	Columbia	2003	\$35,000	\$35,000	\$0	Bridge Off
93615	T-359 over North Branch of Buffalo Creek	Bridge replacement on Township Road #359 (Red Bank Road) over North Branch of Buffalo Creek in West Buffalo Township, Union County	UTL	Union		\$25,148	\$12,574	\$(12,574)	Bridge Off
93642	T-802 over South Branch of Roaring Creek	Bridge replacement on Township Road #802 (Happy Valley Road) over South Branch of Roaring Creek in Ralpho Township, Northumberland County	FD	Northumberland		\$108,000	\$108,000	\$0	Bridge Off
93642	T-802 over South Branch of Roaring Creek	Bridge replacement on Township Road #802 (Happy Valley Road) over South Branch of Roaring Creek in Ralpho Township, Northumberland County	UTL	Northumberland		\$16,000	\$16,000	\$0	Bridge Off
93642	T-802 over South Branch of Roaring Creek	Bridge replacement on Township Road #802 (Happy Valley Road) over South Branch of Roaring Creek in Ralpho Township, Northumberland County	ROW	Northumberland		\$16,000	\$16,000	\$0	Bridge Off
94702	SR 11 from East Main St to 6 <sup>th</sup> St	Reconstruct roadway on SR 11 from East Main Street to 6 <sup>th</sup> Street in the Town of Bloomsburg, Columbia County	CON	Columbia	11	\$1,413,984	\$1,773,558	\$359,574	NHPP
97653	US 11 from Bridge Ave to Old Danville Rd	Reconstruct roadway on US Route 11 From Bridge Avenue to Old Danville Road in Northumberland Borough, Northumberland County. This project includes earmark demo ID PA684.	CON	Northumberland	11	\$853,005	\$1,077,907	\$224,902	NHPP
98540	SR 4004 over Tributary N Branch Susquehanna River	Mile Post Road (SR 4004) over Tributary of North Branch to Susquehanna River in Upper Augusta Township, Northumberland County	PE	Northumberland	4004	\$21,000	\$96,000	\$75,000	Bridge Off
98685	I-80 West Bound Lane over SR 1010	Bridge replacement on Interstate 80 West Bound over State Route 1010 in White Deer Township, Union County	PE	Union	80	\$50,000	\$225,000	\$175,000	NHPP
98685	I-80 West Bound Lane over SR 1010	Bridge replacement on Interstate 80 West Bound over State Route 1010 in White Deer Township, Union County	FD	Union	80	\$150,000	\$200,000	\$50,000	NHPP
98685	I-80 West Bound Lane over SR 1010	Bridge replacement on Interstate 80 West Bound over State Route 1010 in White Deer Township, Union County	UTL	Union	80	\$250,000	\$400,000	\$150,000	NHPP
98685	I-80 West Bound Lane over SR 1010	Bridge replacement on Interstate 80 West Bound over State Route 1010 in White Deer Township, Union County	CON	Unon	80	\$3,650,000	\$3,780,000	\$130,000	NHPP
98962	SR 11 from 6 <sup>th</sup> St to Park St	Roadway resurfacing on US Route 11 from Sixth Street to Park Street in the Town of Bloomsburg, Columbia County	CON	Columbia	11	\$869,000	\$950,000	\$81,000	STP
99327	SR 61 from 5 <sup>th</sup> St to Dark Run	Roadway reconstruction on SR 61 from Fifth Street to Dark Run in Kulpmont Borough & Coal Township, Northumberland County	Study	Northumberland	61	\$24,790	\$24,790	\$0	NHPP



MPMS	SHORT TITLE	PROJECT DESCRIPTION	PH.	COUNTY	SR	OBLIGATED FUNDS FFY 2020	PROG. TOTAL	FED. FUNDS REMAINING	FUND CLASS
100406	SR 44 from SR 42 to Fire Hall Road	Roadway restoration on SR 44 from SR 42 to Fire Hall Road in Hemlock Township, Columbia County	CON	Columbia	44	\$250,000	\$250,000	\$0	STP
101897	Business 3002 Resurfacing	Highway resurfacing on State Route 3002 (Business US 22) and State Route 3006 in Granville Township and Lewistown Borough, Mifflin County	FD	Mifflin	3002	\$350,000	\$350,000	\$0	NHPP
101897	Business 3002 Resurfacing	Highway resurfacing on State Route 3002 (Business US 22) and State Route 3006 in Granville Township and Lewistown Borough, Mifflin County	UTL	Mifflin	3002	\$75,000	\$75,000	\$0	NHPP
101897	Business 3002 Resurfacing	Highway resurfacing on State Route 3002 (Business US 22) and State Route 3006 in Granville Township and Lewistown Borough, Mifflin County	ROW	Mifflin	3002	\$175,000	\$175,000	\$0	NHPP
101897	Business 3002 Resurfacing	Highway resurfacing on State Route 3002 (Business US 22) and State Route 3006 in Granville Township and Lewistown Borough, Mifflin County	CON	Mifflin	3002	\$3,799,401	\$3,799,401	\$0	STP
101959	Lewistown Safety Corridor	Safety improvement (traffic signal upgrades) on SR 1005 in Lewistown Borough, Mifflin County	CON	Mifflin	1005	\$346,373	\$3,450,000	\$3,103,627	Safety
102502	Peale Avenue Bridge	Bridge replacement on Peale Avenue over Fishing Creek in Mill Hall Borough, Clinton County	FD	Clinton	7405	\$228,000	\$228,000	\$0	Bridge Off
102502	Peale Avenue Bridge	Bridge replacement on Peale Avenue over Fishing Creek in Mill Hall Borough, Clinton County	UTL	Clinton	7405	\$40,000	\$40,000	\$0	Bridge Off
102502	Peale Avenue Bridge	Bridge replacement on Peale Avenue over Fishing Creek in Mill Hall Borough, Clinton County	ROW	Clinton	7405	\$40,000	\$40,000	\$0	Bridge Off
103853	SR 54 Corridor Safety Improvement	Safety improvements to the SR 54 and SR 642 intersections in Valley and Mahoning Townships, Montour County	PE	Montour	54	\$621,797	\$1,307,361	\$685,564	Safety
105525	I-80 West Bound from Stump Rd to Klondike Rd	Mill and resurface I-80 West Bound from Stump Rd to Klondike Rd in Liberty Township, Montour County	PE	Montour	80	\$150,000	\$239,000	\$89,000	NHPP
106321	2020 SEDACOG Bridge Preservation	Bridge preservation on 4 bridge structures in Mifflin and Juniata Counties: 1. SR 103 over Tributary to Juniata River in Granville Township, Mifflin County 2. SR 75 over Tributary to Tuscarora Creek in Spruce Hill Township, Juniata County 3. SR 3017 over Tributary to Tuscarora Creek in Beale Township, Juniata County 4. SR 3018 over Tuscarora Creek in Tuscarora Township, Juniata County	PE	Mifflin	103	\$90,000	\$305,000	\$215,000	STP
106321	2020 SEDACOG Bridge Preservation	Bridge preservation on 4 bridge structures in Mifflin and Juniata Counties:	CON	Mifflin	103	\$1,850,000	\$1,850,000	\$0	Bridge Off

MPMS	SHORT TITLE	PROJECT DESCRIPTION	PH.	COUNTY	SR	OBLIGATED FUNDS FFY 2020	PROG. TOTAL	FED. FUNDS REMAINING	FUND CLASS
		1. SR 103 over Tributary to Juniata River in Granville Township, Mifflin County 2. SR 75 over Tributary to Tuscarora Creek in Spruce Hill Township, Juniata County 3. SR 3017 over Tributary to Tuscarora Creek in Beale Township, Juniata County 4. SR 3018 over Tuscarora Creek in Tuscarora Township, Juniata County							
109322	Keystone Healthcare Development	Keystone Healthcare Development Transportation Project new roadway in Derry Township, Mifflin County	CON	Mifflin	4013	\$556,000	\$556,000	\$0	Special Funds
109872	SR 150 Lock Haven Signals	Signal improvements at 9 signalized locations on State Route 150, 1 signalized location on State Route 120, in the City of Lock Haven, Clinton County. Pedestrian upgrades at 1 unsignalized location on State Route 150 in the City of Lock Haven, Clinton County.	PE	Clinton	150	\$78,300	\$578,300	\$500,000	Safety
109872	SR 150 Lock Haven Signals	Signal improvements at 9 signalized locations on State Route 150, 1 signalized location on State Route 120, in the City of Lock Haven, Clinton County. Pedestrian upgrades at 1 unsignalized location on State Route 150 in the City of Lock Haven, Clinton County.	FD	Clinton	150	\$480,000	\$480,000	\$0	Safety
109872	SR 150 Lock Haven Signals	Signal improvements at 9 signalized locations on State Route 150, 1 signalized location on State Route 120, in the City of Lock Haven, Clinton County. Pedestrian upgrades at 1 unsignalized location on State Route 150 in the City of Lock Haven, Clinton County.	ROW	Clinton	150	\$200,000	\$200,000	\$0	Safety
110354	2021 Bridge Preservation	Bridge improvements at 2 locations: State Route 120 over Norfolk Southern Railroad in Renovo Borough and State Route 1002 over Susquehanna River in Dunnstable Township, Clinton County	PE	Clinton	120	\$285,000	\$285,000	\$0	STP
110889	NSHR Corridor RRX	Railroad crossing upgrade: Install signal and gates at the Rail crossings on Train Street in Montour Township and Front, 2 <sup>nd</sup> , 3 <sup>rd</sup> , Susquehanna, and Warren Streets in the Borough of Berwick, Columbia County and Hanover Street in the Borough of Northumberland, Northumberland County	CON	Columbia		\$394,999	\$1,394,999	\$1,000,000	Rail & Highway
110892	UCIR Corridor 2 RRX	Railroad crossing upgrades: Approach upgrades and install signals at the Market Street (SR 45), Buffalo Road, St. Mary's Street, Cherry Alley, St. Louis Street, University Avenue, and Brown Street crossings in Lewisburg Borough, Union County	CON	Union	45	\$363,370	\$363,370	\$0	Rail & Highway

MPMS	SHORT TITLE	PROJECT DESCRIPTION	PH.	COUNTY	SR	OBLIGATED FUNDS FFY 2020	PROG. TOTAL	FED. FUNDS REMAINING	FUND CLASS
111078	Spook Hollow RR Warning Device	Installation of railroad warning device on Township Road 425 (Spook Hollow Road) over Norfolk Southern, Double Track Crossing, in Wayne Township, Clinton County	CON	Clinton		\$10,000	\$375,000	\$365,000	Rail & Highway
111351	NSHR #2 RRX	Rail crossing upgrades to include Masts, Gates, and Lights at Rail Crossings on King Street (State Route 147), Orange Street in Northumberland Borough, Northumberland County, Church and Wall St. in Danville Borough, Montour County, Central Road in Scott Township, South Eaton Street in Berwick Borough, and Industrial Drive in South Centre Township, Columbia County	CON	Northumberland	147	\$612,095	\$1,722,095	\$1,110,000	Rail & Highway
111458	Clinton County Rail Trail	Clinton County Rail to Trail project is to convert an abandoned railroad bridge over the Susquehanna River to a rail/trail and construct associated connecting ramps, adjacent to Spook Hollow Road in Wayne and Pine Creek Townships, Clinton County	PE	Clinton	2012	\$1,000	\$21,000	\$20,000	STP
111458	Clinton County Rail Trail	Clinton County Rail to Trail project is to convert an abandoned railroad bridge over the Susquehanna River to a rail/trail and construct associated connecting ramps, adjacent to Spook Hollow Road in Wayne and Pine Creek Townships, Clinton County	CON	Clinton	2012	\$2,505,992	\$2,505,992	\$0	Enhancements
111459	East Church Street Streetscape	Streetscape project along East Church Street in the City of Lock Haven, Clinton County	PE	Clinton	150	\$20,000	\$20,000	\$0	STP
111459	East Church Street Streetscape	Streetscape project along East Church Street in the City of Lock Haven, Clinton County	CON	Clinton	150	\$1,008,000	\$1,008,000	\$0	Enhancements
111460	Sidewalk and Curb Enhancements	Sidewalk and curb enhancements in Renovo Borough, Clinton County	Study	Clinton	120	\$60,000	\$0	\$(60,000)	Enhancements
111461	Brown Township Streetscape	Streetscape improvements in Brown Township, Mifflin County	PE	Mifflin	1005	\$1,500	\$21,500	\$20,000	STP
111607	SR 0011/0487 Pedestrian Improvements	Repair deteriorated sidewalk, install new sidewalk in areas where none currently exist and install new street lighting on SR 11 First Columbia Bank driveway, south to SR 487 Town Park Village Apartments in Town of Bloomsburg, Columbia County	CON	Columbia	11	\$1,113,350	\$1,113,350	\$0	Enhancements
111851	SR 4009 Flood Repair 2018	Emergency flood repairs (2018 Flood) - Bridge approach reconstruction, shoulder and drainage repair, debris removal on Millville Road (SR 4009) in Town of Bloomsburg & Hemlock Township, Columbia County	CON	Columbia	4009	\$212,917	\$0	\$(212,917)	Special Funds
111852	SR 44 Flood Repair 2018	Flood repairs (2018 Flood) on SR 44 in Anthony Township, Montour County	CON	Montour	44	\$31,107	\$0	\$(31,107)	Special Funds

MPMS	SHORT TITLE	PROJECT DESCRIPTION	PH.	COUNTY	SR	OBLIGATED FUNDS FFY 2020	PROG. TOTAL	FED. FUNDS REMAINING	FUND CLASS
111869	SR 4009 over Fishing Creek Flood Repair 2018	Emergency flood repair (2018 Flood) - Debris Removal on Millville Road (SR 4009) over Fishing Creek in Mt Pleasant Township and the Town of Bloomsburg, Columbia County	CON	Columbia	4009	\$16,039	\$0	\$(16,039)	Special Funds
111885	SR 44 Permanent Flood Repair 2018	Flood repairs on SR 44 in Anthony Township, Montour County	CON	Montour	44	\$101,414	\$112,000	\$10,586	Special Funds
111925	SR 4009 Permanent Flood Repair 2018	Permanent flood repair (2018 Flood) on Millville Road (SR 4009) in the Town of Bloomsburg, Mt Pleasant & Hemlock Townships, Columbia County	CON	Columbia	4009	\$28,496	\$35,619	\$7,124	Special Funds
111987	SR 44 over Mid Br Chillisquaque Crk Flood Rpr 2018	Flood repair (2018 Flood) - Rock protection on SR 44 over the Middle Branch of Chillisquaque Creek in Anthony Township, Montour County	CON	Montour	44	\$55,284	\$48,000	\$(7,284)	Special Funds
112144	SR 4009 Guiderail Placement Flood Repair 2018	Flood repair (2018 Flood) - Guiderail placement on Millville Road (SR 4009) in Mt Pleasant Township and the Town of Bloomsburg, Columbia County	CON	Columbia	4009	\$21,566	\$80,000	\$58,434	Special Funds
112598	SR 22 Resurfacing	Highway resurfacing and concrete pavement repair on SR 22/322 in Lewistown Borough, Derry and Granville Townships, Mifflin County	CON	Mifflin	22	\$4,209,510	\$4,477,681	\$268,171	NHPP
113429	SR 22 High Friction Surface HSIP	High friction surface safety improvement on SR 22 (2 locations) in Juniata County, SR 322 in Mifflin County, and I-80 in Clinton County	CON	Juniata	22	\$662,060	\$836,000	\$173,940	Safety
113459	T-319 over Penns Creek (Union Cnty #23)	Bridge study to determine cause of deficiencies, scope of work for needed repairs, time needed for pre-construction activities, and estimated overall costs for design and construction on T-319 over Penns Creek in Hartley Township, Union County	Study	Union		\$200,000	\$200,000	\$0	Bridge Off
114282	SEDACOG Bridge Epoxy Surface Treatment	Bridge preservation bridge epoxy surface treatments at 4 locations in Clinton & Juniata Counties	CON	Clinton	477	\$95,800	\$95,800	\$0	NHPP
114964	DF Work 2018 Flood Columbia County	Department force work for 2018 Flood in Columbia County	CON	Columbia		\$448,036	\$3,256	\$(444,780)	Special Funds
115074	DF Work 2018 Flood Montour County	Department force work for 2018 Flood in Montour County	CON	Montour		\$8,888	\$0	\$(8,888)	Special Funds
115075	DF Work 2018 Flood Northumberland County	Department force work for 2018 Flood in Northumberland County	CON	Northumberland		\$83,143	\$0	\$(83,143)	Special Funds

**\$38,248,441**

## **Transit Grants**

There were no federally-funded transit grants awarded in FY 2019-20 to a transit agency operating in the SEDA-COG MPO region.