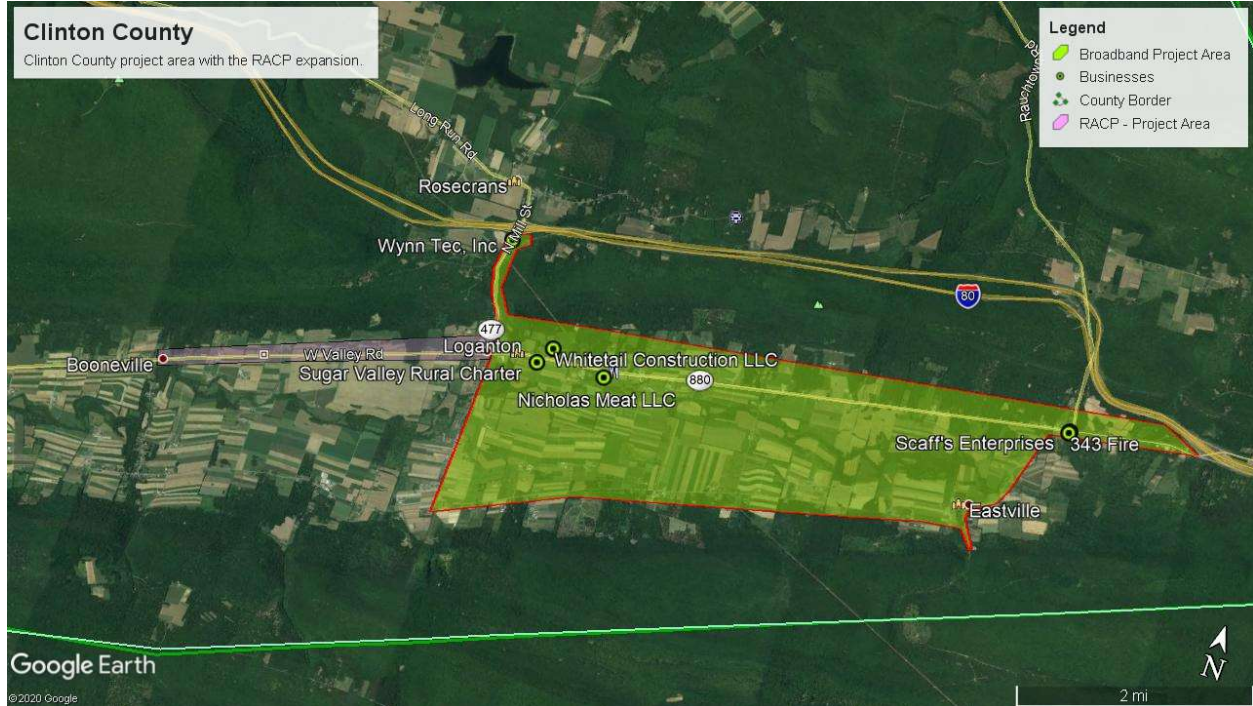


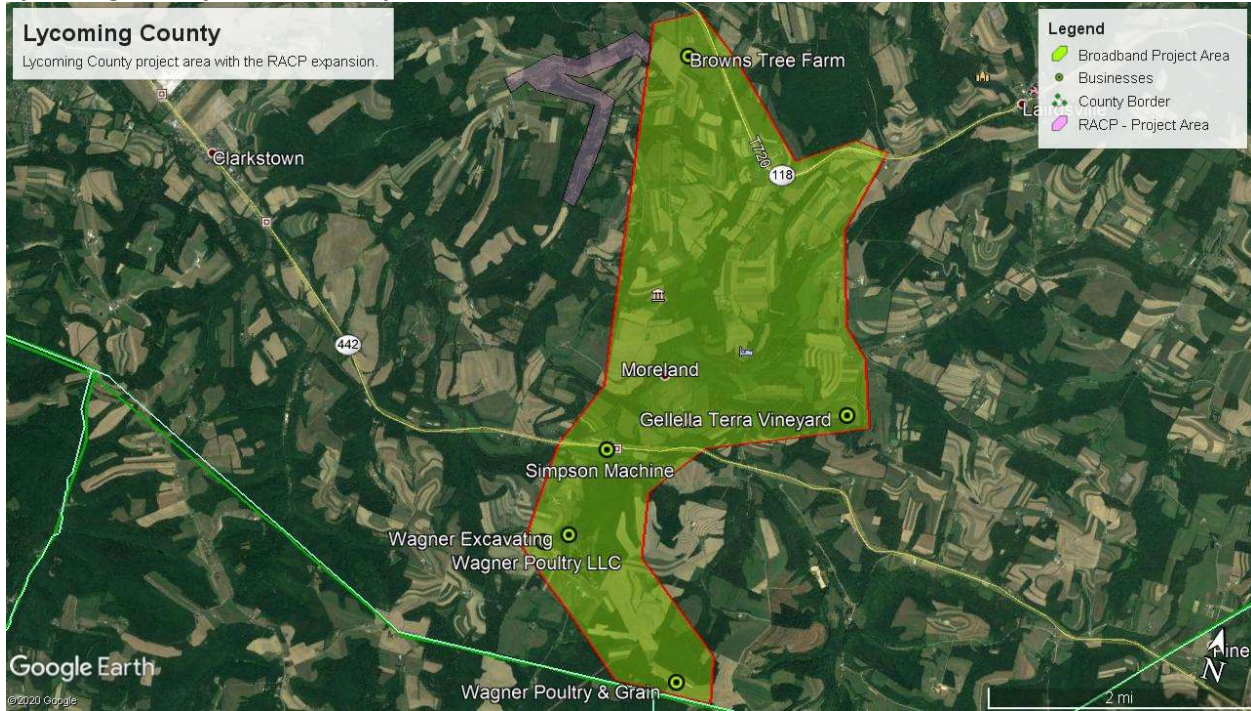
Attachment A

There is a potential opportunity to make additional funding available from the Pennsylvania Redevelopment Assistance Capital Program (RACP) in the form of a reimbursable grant up to \$250,000 that will be paired with the \$1.5 million in loan/grant funds that would bring the total amount of funding available to \$1.75 million per County. This additional funding, if approved will be used to expand the current project areas in each county.

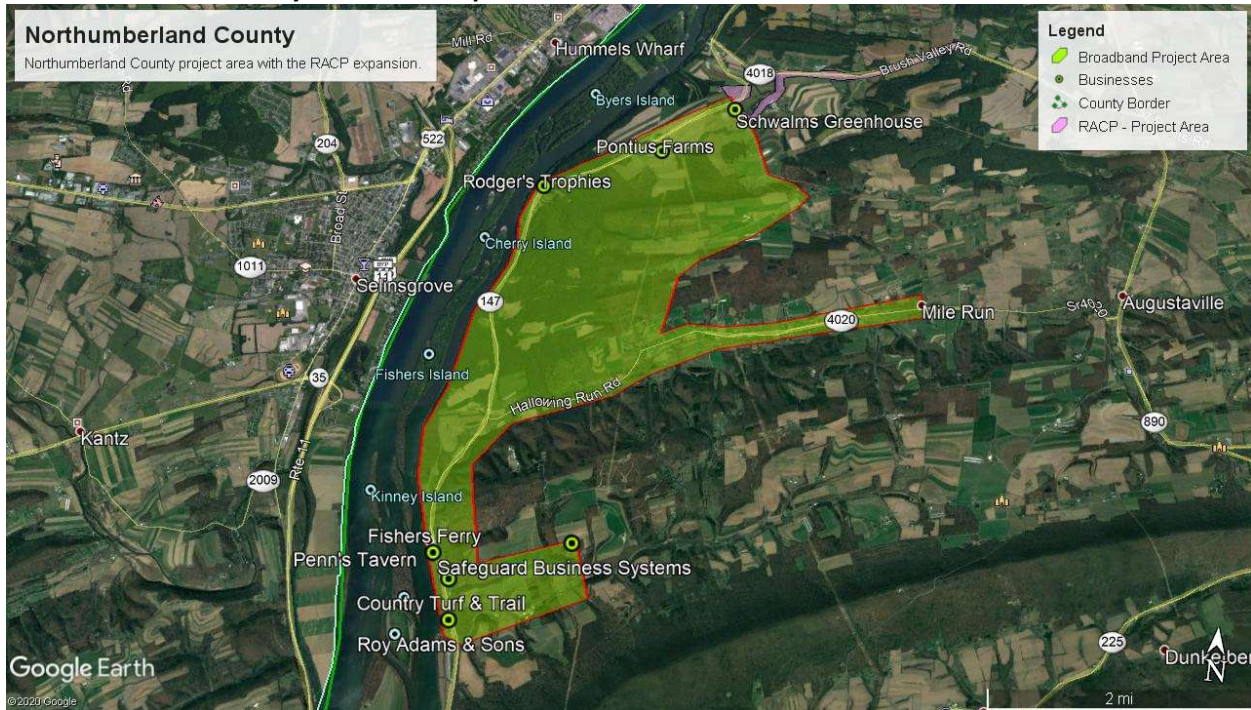
Clinton County with RACP Expansion



Lycoming County with RACP Expansion



Northumberland County with RACP Expansion



Union County with RACP Expansion

