

## **GEORGETOWN HEIGHTS ELDERLY APARTMENT COMPLEX**

Applications are being accepted from eligible elderly individuals and couples who wish to rent a one-bedroom or two-bedroom apartment at 113 Georgetown Heights, Dalmatia, Pennsylvania. Applications can be obtained from Rental Housing at the SEDA-COG Office Complex, 201 Furnace Road, Lewisburg, Pennsylvania, 17837, or by calling 570-524-4491.

### **WHAT IS GEORGETOWN HEIGHTS APARTMENT COMPLEX?**

The apartment complex consists of 24 individual living units designed to house senior citizens 55 years of age or older. These apartments offer modern, maintenance-free, and affordable living. All of the apartments consist of a combined kitchen/dining area, living room, bedroom, and bathroom. The facility also has luxuriously furnished community spaces located throughout. These spaces include a community room, sitting lounges, a library, a computer lab, and a three-season porch overlooking the Susquehanna River Valley.

### **WHO IS ELIGIBLE?**

Individuals who are at least 55 years of age and whose annual incomes are at or below \$26,580 for one-person households and \$30,360 for two-person households.

### **HOW MUCH RENT DOES A RESIDENT PAY?**

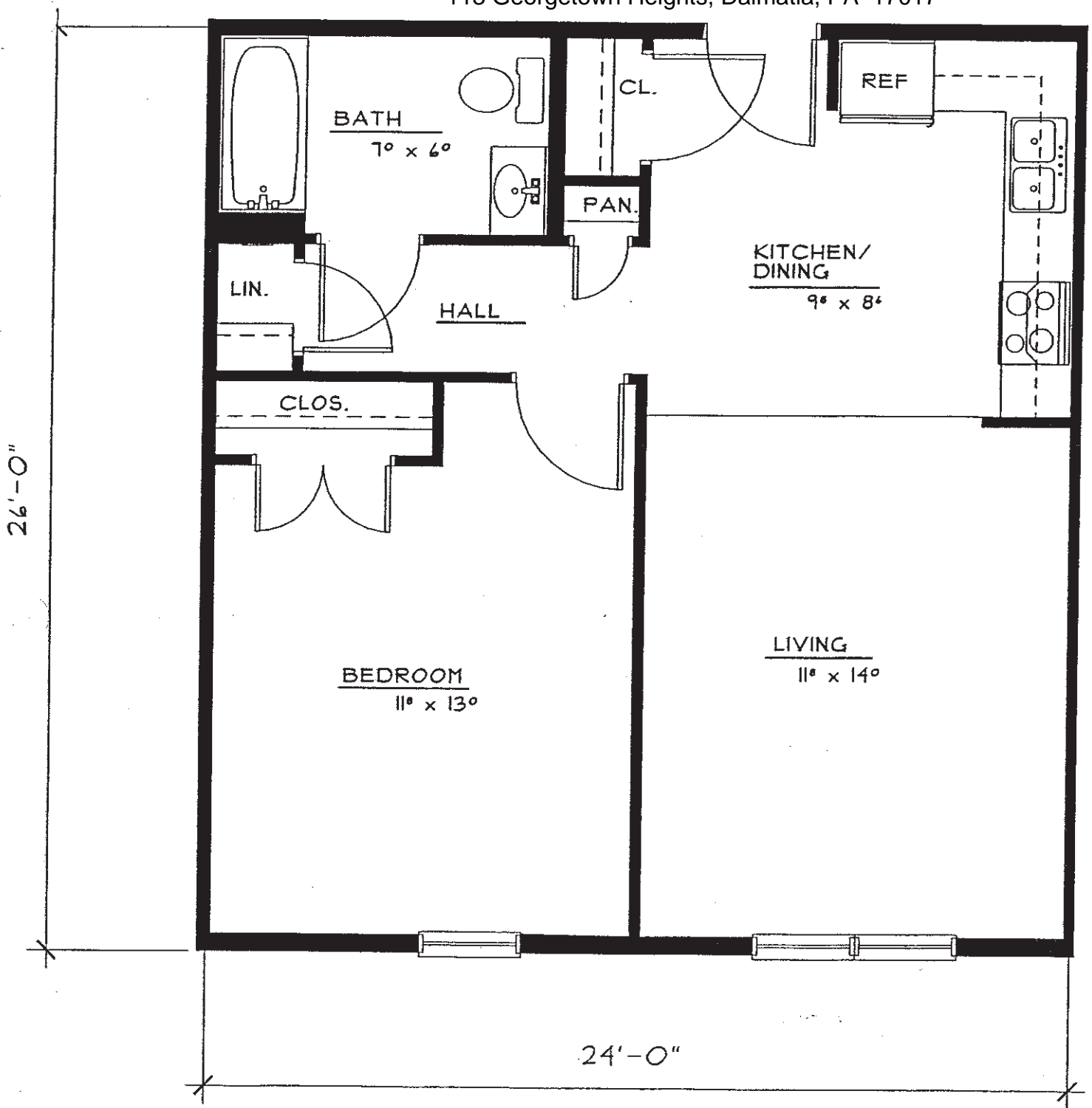
\$545 for a one-bedroom apartment \$645 for a two-bedroom apartment. The monthly rent includes all utilities with the exception of cable television and telephone.

Note: Rent and income subject to change.



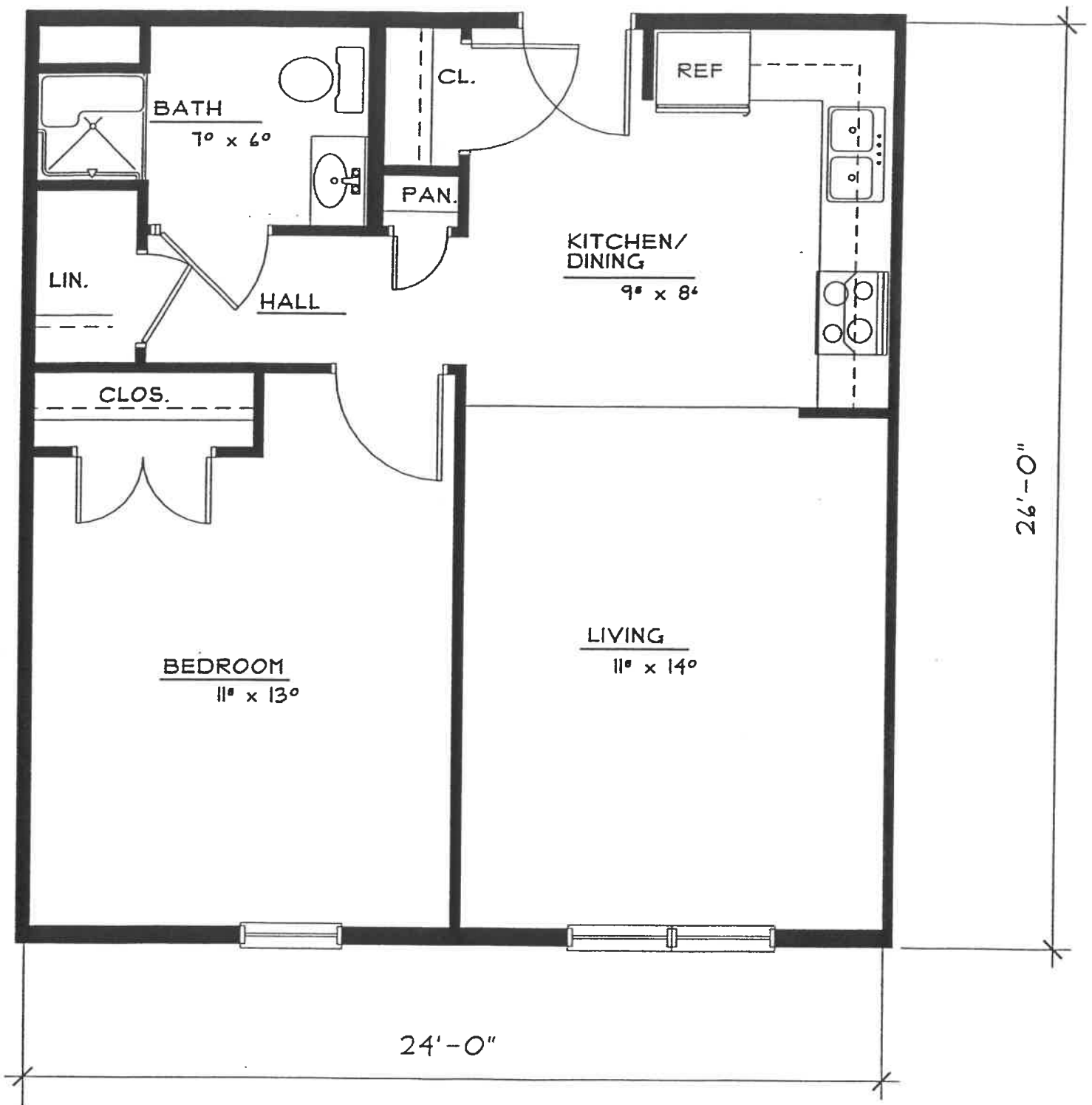
Equal Housing  
Opportunity

Georgetown Heights  
113 Georgetown Heights, Dalmatia, PA 17017



TYPICAL ONE  
BEDROOM APARTMENT 624 SQ. FT.

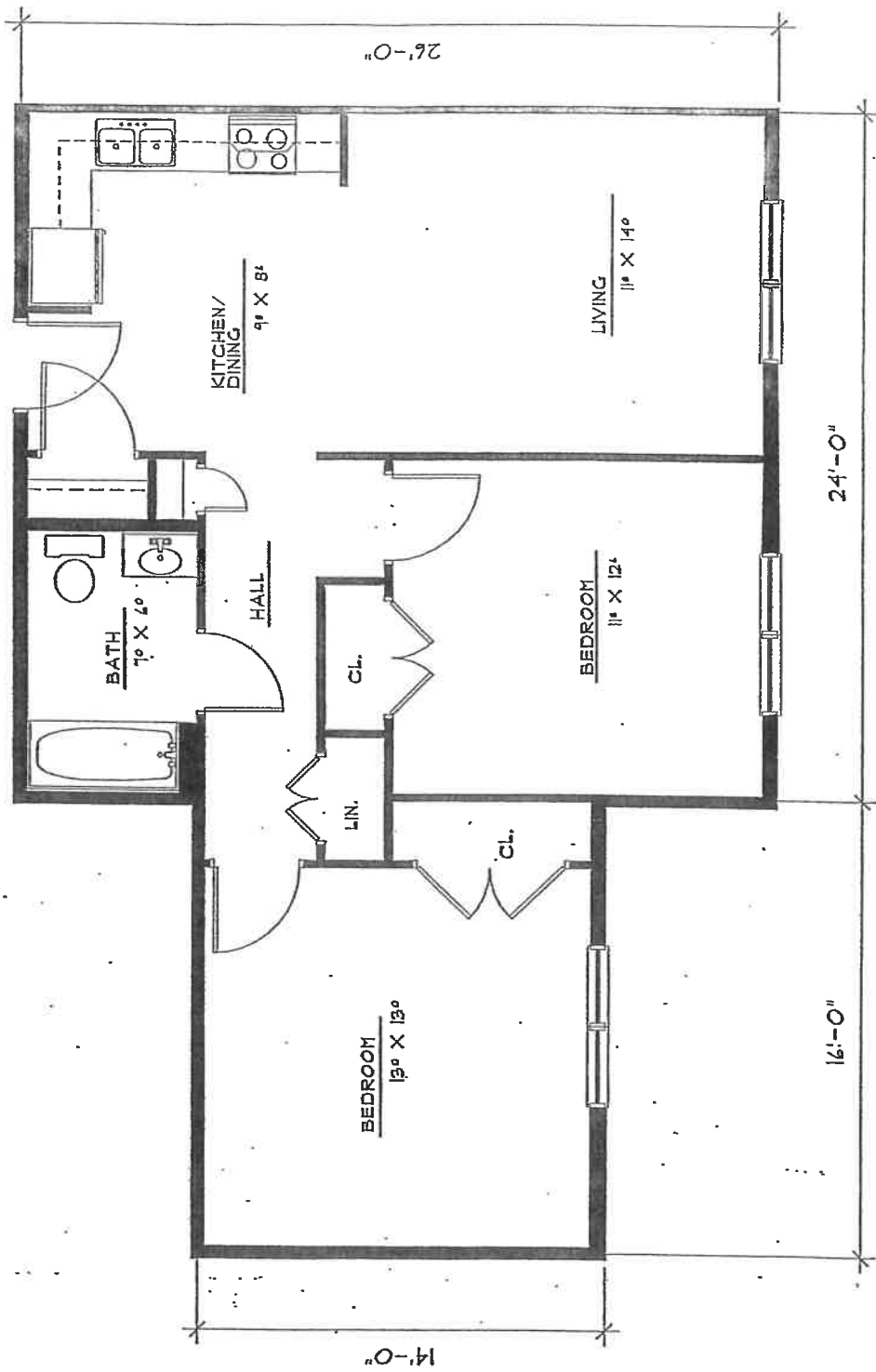
SCALE: 1/4" = 1'-0"



TYPICAL HANDICAPPED  
 ONE BEDROOM  
 APARTMENT

624 SQ. FT.

SCALE: 1/4" = 1'-0"



TYPICAL TWO BEDROOM  
 APARTMENT 848 SQ. FT.  
 SCALE: 1/4" = 1'-0"

# PRE-APPLICATION FORM

Dear Applicant:

We are pleased to be able to offer you the opportunity to apply for residence at Georgetown Heights, a high-quality, affordable elderly housing complex. To make the application process run as smoothly as possible, we would appreciate it if you would take a few moments to complete the following form in its entirety. If you have any questions, please contact Rental Housing within SEDA-COG, 201 Furnace Road, Lewisburg, PA 17837 or at 570-524-4491.

Do you require limited English proficiency documents?  Yes  No

1. Name of household head: \_\_\_\_\_

2. Your complete address: \_\_\_\_\_

3. Home phone # \_\_\_\_\_ Other phone # \_\_\_\_\_

4. What is your birth date? \_\_\_\_\_

5. If you are requesting a two-person apartment, who else will be living here?

\_\_\_\_\_ Birthdate: \_\_\_\_\_

6. What is the total gross income (before taxes) per year of all members of the household who will occupy the apartment, including employment income, income from assets, pensions, government benefits, and all other sources? \_\_\_\_\_

7. Are you or any members of your household full-time students carrying a full course load (as defined by the educational institution) for at least five months per calendar year?

Yes  No

8. Are all members of your household 55 years of age or older?

Yes  No

9. How did you hear about our facility? \_\_\_\_\_

10. Would anyone in your household benefit from an accessible unit? \_\_\_\_\_

11. If this is a two-person household, is a two-bedroom apartment required? \_\_\_\_\_

**PLEASE MAIL THIS QUESTIONNAIRE TO:**

**SEDA-COG Attn. Rental Housing  
201 Furnace Road  
Lewisburg, PA 17837**

**OR FAX TO: 570-524-9190**

**OR EMAIL TO: [rwiest@seda-cog.org](mailto:rwiest@seda-cog.org)**

Thank you for your time and assistance

Sincerely,

Dalmatia Elderly Housing Associates

